



Price

£650,000

Freehold

5x  2x  2x 

**Hever Road, West
Kingsdown, Sevenoaks,
Kent, TN15**

Wards
Helping you move forwards



Main features

- Secure gated entrance
- Offered with no onward chain
- Catchment area for grammar schools
- Immaculate and extended, offering flexible family living
- Fantastic location close to amenities & easy access to M20 and M25

Accommodation

GROUND FLOOR

- Hallway
- Lounge: 15'7 x 14'0 (4.75m x 4.27m)
- Dining Area: 13'7 x 11'0 (4.14m x 3.36m)
- Kitchen: 12'3 x 10'0 (3.74m x 3.05m)
- Utility Room: 8'9 x 5'2 (2.67m x 1.58m)
- Cloakroom: 5'4 x 2'8 (1.63m x 0.81m)
- Bedroom 2: 11'4 x 10'0 (3.46m x 3.05m)
- Bedroom 3: 12'11 x 11'1 (3.94m x 3.38m)
- Office/Bedroom 4: 9'0 x 8'2 (2.75m x 2.49m)
- Wet Room: 8'8 x 7'6 (2.64m x 2.29m)

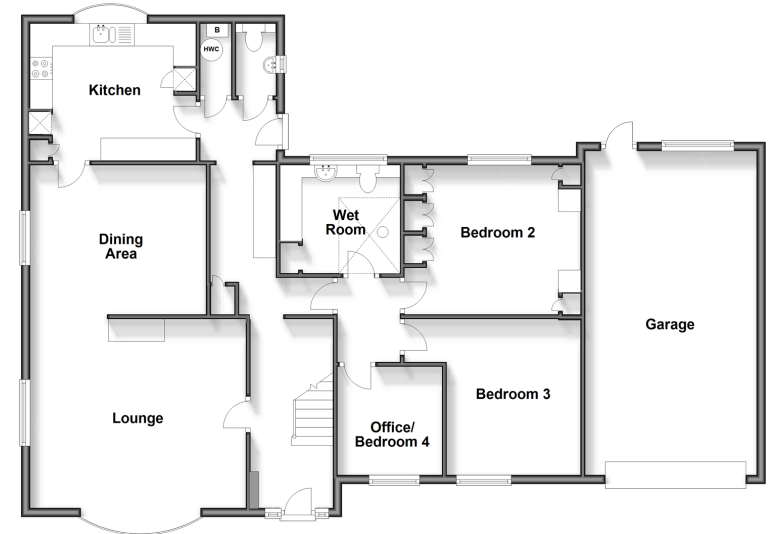
FIRST FLOOR

- Landing
- Bedroom 1: 13'0 x 12'8 (3.97m x 3.86m)
- Bedroom 5: 12'4 x 9'0 (3.76m x 2.75m)
- Shower Room: 9'3 x 4'7 (2.82m x 1.40m)

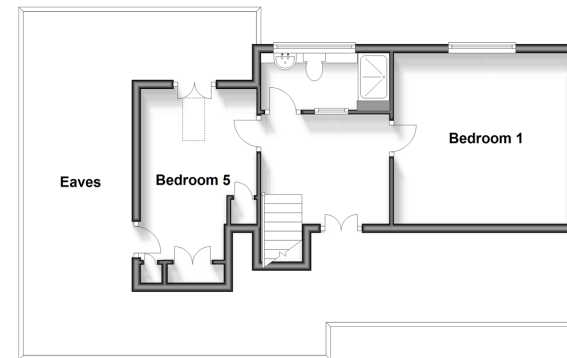
OUTSIDE

- Double Garage
- Driveway
- Front Garden
- Rear Garden

Ground Floor
Approx. 136.4 sq. metres (1468.0 sq. feet)



First Floor
Approx. 37.6 sq. metres (403.4 sq. feet)



Call West Kingsdown - 01474 852816 ■ wardsofKent.co.uk

- Legal advice should be taken to verify fixtures/fittings, planning, alterations and/or lease details
- Appliances & services are untested, dimensions are approximate and floor plans are not to scale



14419913/20260130/RF/GM