



## Stanhope Mews West, SW7

£720 Per week

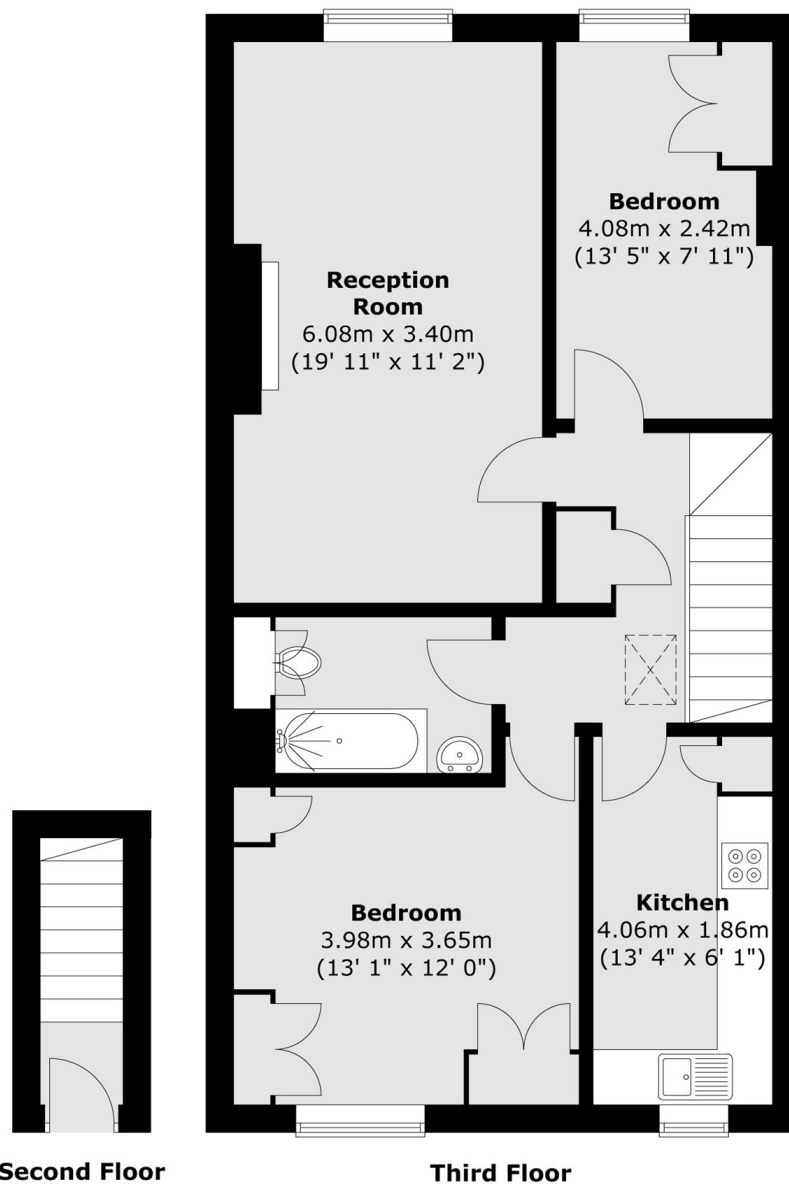
A recently refurbished two bedrooms apartment situated on the third floor, featuring wooden flooring throughout and conveniently located close to Gloucester Road Station.

Stanhope Mews West is ideally situated between South Kensington and Gloucester Road, within a short walking distance of a range of shops, restaurants, cafés, and local amenities, as well as access to the District, Circle, and Piccadilly Underground lines.

### Features

- Two Bedrooms
- Wood Floors
- Separate Kitchen
- Great Location

# Stanhope Mews West, London, SW7



Total area (approx.) : 70.2 sq. m (756 sq. ft)