

OVER 60?

Secure this property
for up to **59% less!**



Guide Price

£400,000

Freehold

5x  2x  2x 

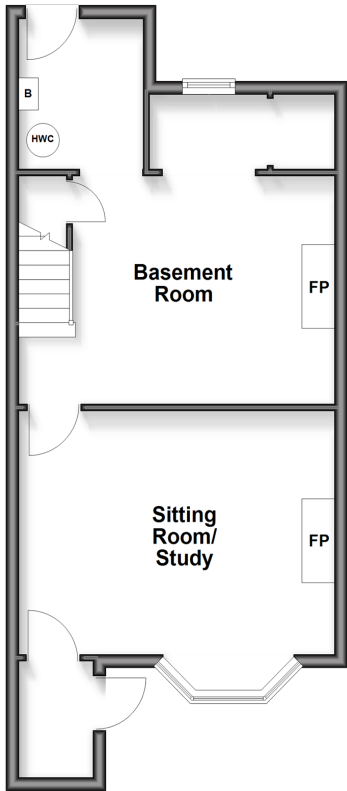
Grange Road, Ramsgate, Kent, CT11

Wards

Helping you move forwards

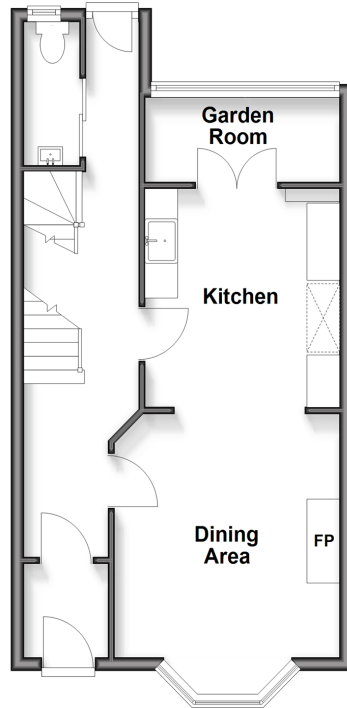
Lower Ground Floor

Approx. 44.8 sq. metres (482.3 sq. feet)



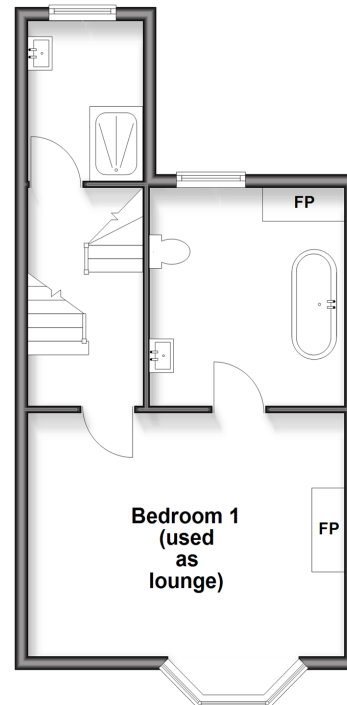
Ground Floor

Approx. 42.5 sq. metres (458.0 sq. feet)



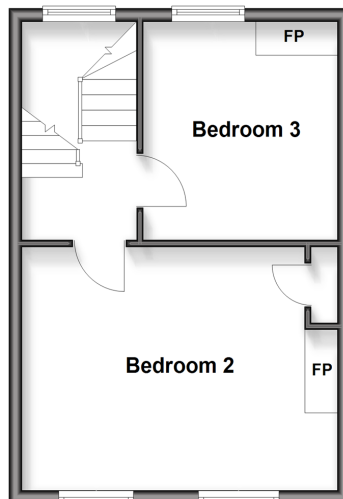
Split Level First Floor

Approx. 38.4 sq. metres (413.1 sq. feet)



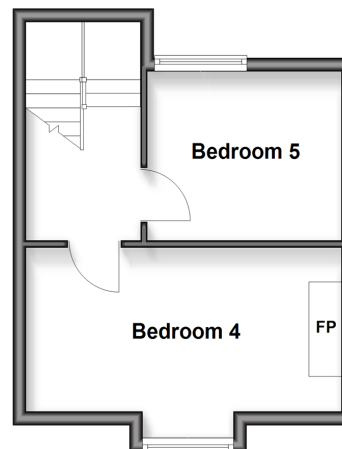
Second Floor

Approx. 33.8 sq. metres (363.3 sq. feet)



Third Floor

Approx. 26.3 sq. metres (283.3 sq. feet)



Accommodation

GROUND FLOOR

Porch

Entrance Hallway

Dining Area: 15'1 x 11'4 (4.60m x 3.46m)

Kitchen : 10'6 x 9'8 (3.20m x 2.95m)

Garden Room : 8'9 x 4'4 (2.67m x 1.32m)

Cloakroom

LOWER GROUND FLOOR

Sitting Room/Study : 14'9 x 14'8 (4.50m x 4.47m)

Basement Room : 15'1 x 13'3 (4.60m x 4.04m)

SPLIT LEVEL FIRST FLOOR

Landing

Bedroom 1 Used as a Lounge : 15'1 x 11'6 (4.60m x 3.51m)

En-Suite Bathroom : 10'5 x 9'8 (3.18m x 2.95m)

Shower Room

SECOND FLOOR

Landing

Bedroom 2 : 14'9 x 11'7 (4.50m x 3.53m)

Bedroom 3 : 10'6 x 9'8 (3.20m x 2.95m)

THIRD FLOOR

Bedroom 4 : 14'1 x 11'2 (4.30m x 3.41m)

Bedroom 5 : 9'8 x 9'6 (2.95m x 2.90m)

OUTSIDE

Garden to Rear



Main features

- Five story town house, recently decorated
- New windows to the front of the property
- New slate roof
- Spacious garden laid to lawn
- Primary bedroom with spacious en-suite



Nearest Schools

Primary Schools: Ramsgate, Christ Church C of E Junior School 0.0 miles, St Laurence in Thanet C of E Junior School 0.6 miles, Chilton Primary 0.6 miles
Secondary Schools: Clarendon and Chatham House Grammar School 0.3 miles,

Transport Information

Train Stations: Ramsgate 0.7 miles, Dumpton Park 1.3 miles, Broadstairs 2.3 miles

Address

Grange Road, Ramsgate, Kent, CT11

Directions

For directions to this property please contact us.





Wards
Helping you move forwards

Call Ramsgate Branch 01843 580314 ■ wardsofkent.co.uk



■ Through a Homewise Home For Life Plan people aged 60+ can secure this property for up to 59% less, by purchasing a Lifetime Lease



11435059/20260327/DL/ATN