



Guide Price
£265,000

Freehold

3x  1x  1x 

**Goldfinch Close,
Faversham, Kent, ME13**

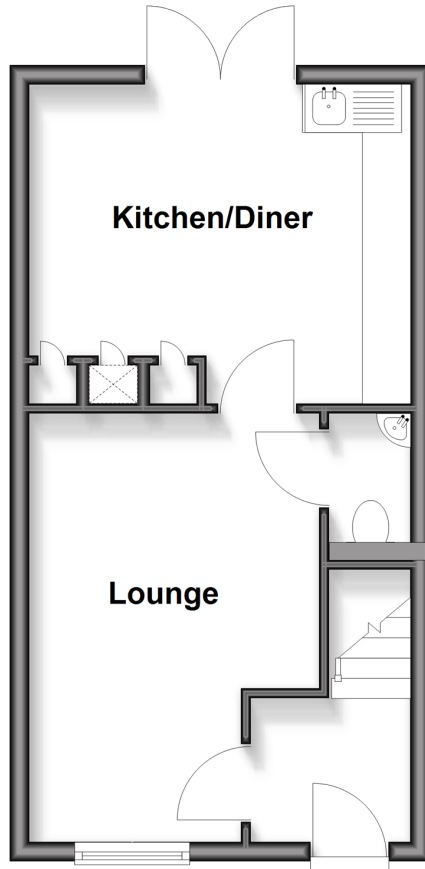
OVER 60?

Secure this property
for up to **59% less!**

Wards
Helping you move forwards

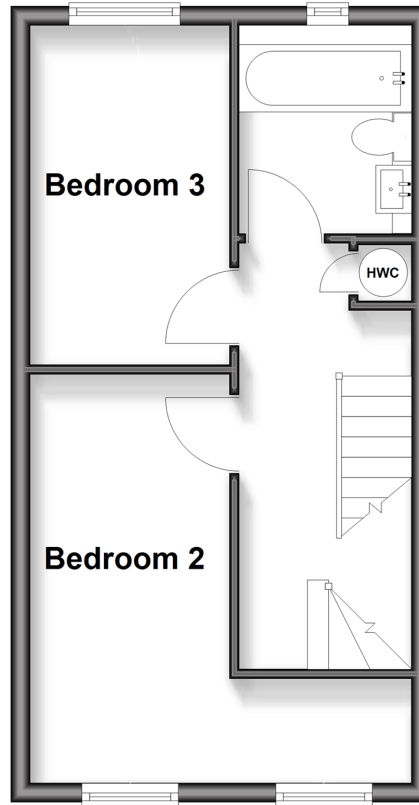
Ground Floor

Approx. 31.1 sq. metres (334.6 sq. feet)



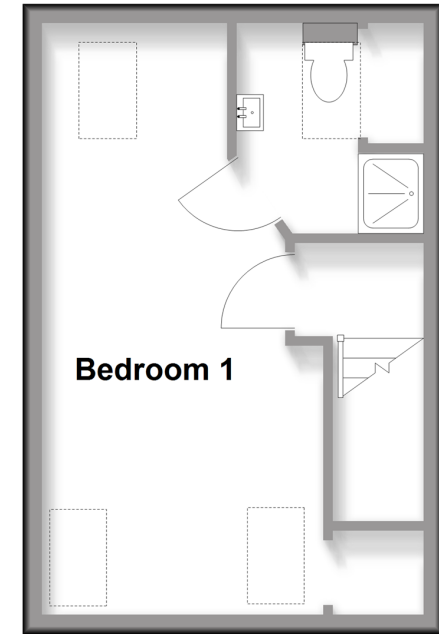
First Floor

Approx. 31.1 sq. metres (334.6 sq. feet)



Second Floor

Approx. 24.3 sq. metres (261.2 sq. feet)



Accommodation

GROUND FLOOR

Entrance Hall

Lounge: 15'0 x 10'0 (4.58m x 3.05m)

Cloakroom

Kitchen/Diner: 12'11 x 12'0 (3.94m x 3.66m)

FIRST FLOOR

Landing

Bedroom 2: 14'9 (4.50m) narrowing to 12'9 maximum (3.89m) x 6'9 (2.06m)

Bedroom 3: 10'11 x 7'3 (3.33m x 2.21m)

Bathroom

SECOND FLOOR

Landing

Bedroom 1: 19'4 x 9'5 (5.90m x 2.87m)

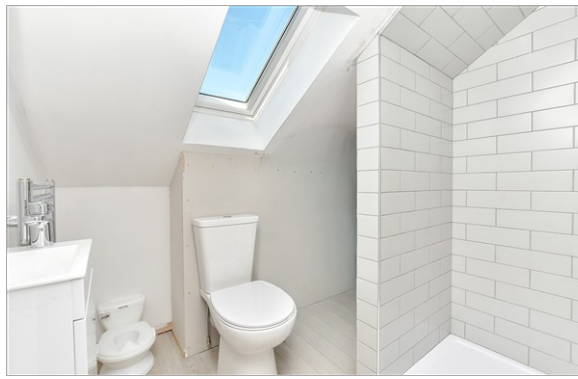
En-suite Shower Room

OUTSIDE

Front Garden

Rear Garden

Timber Chalet



Main features

- Newly built property
- Deceptively spacious family orientated living accommodation
- Manageable gardens with timber chalet for multiple use
- Highly insulated economical house using latest technology
- Short walk to Davington Priory primary school



Nearest Schools

Primary Schools: Davington Primary 0.1 miles, St Mary of Charity CE (Aided) Primary 0.6 miles

Secondary Schools: Queen Elizabeth's Grammar School 0.5 miles, The Abbey School 1.0 miles



Transport Information

Train Stations: Faversham 1.0 miles, Selling 5.0 miles, Teynham 5.2 miles



Address

Goldfinch Close, Faversham, Kent, ME13



Directions

For directions to this property please contact us.



Wards
Helping you move forwards

Call Faversham Branch 01795 535517 ■ wardsof Kent.co.uk



■ If buying to rent, please check if Local Authority licensing schemes apply before proceeding

■ Through a Homewise Home For Life Plan people aged 60+ can secure this property for up to 59% less, by purchasing a Lifetime Lease

10832510/20260520/HR/PJ