



Wrotham Road, NW1

£1,450,000

Dexters



Wrotham Road, NW1

This semi-detached double fronted freehold house is approximately 2,025 sq.ft and is in need of refurbishment.

Wrotham Road is a tree-lined residential road within a mile of Caledonian Road station (Piccadilly line), Camden Road Overground, Camden Town station (Northern line), and St Pancras International (Eurostar).

Features

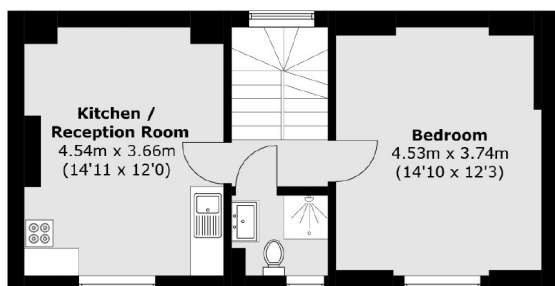
- Double Fronted
- Chain Free
- Garden
- Great Location
- Freehold
- In Need Of Refurbishment



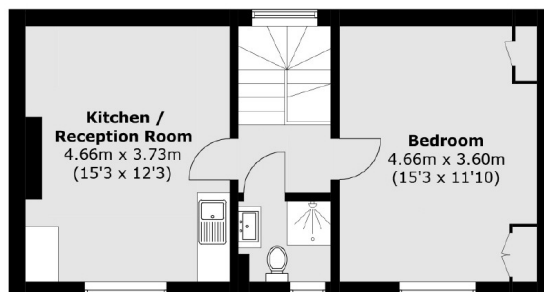




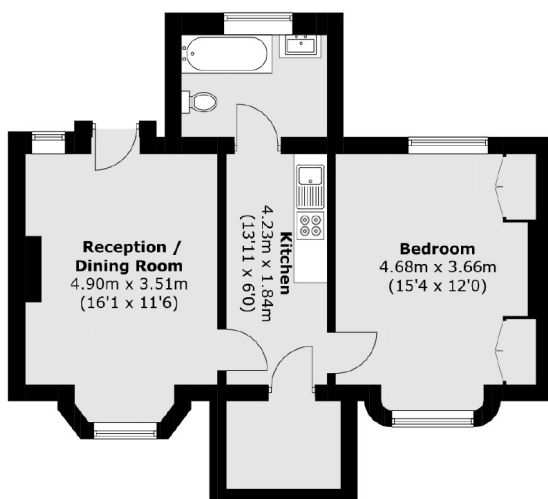
Wrotham Road, London, NW1



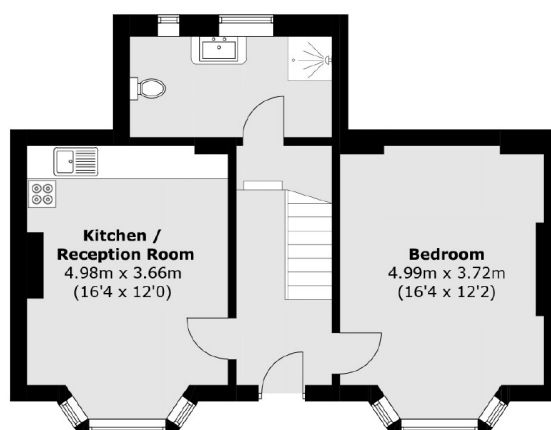
First Floor



Second Floor



Lower Ground Floor



Raised Ground Floor

Total area (approx.): 188.2 sq. m (2,025.7 sq. ft)