



Nassington Road, Hampstead Heath, London, NW3

Price Guide £390,000



1



1



1



# 17 Nassington Road



## Description

FOR SALE BY ONLINE AUCTION ON 26th MARCH 2026 (unless sold prior)

A one bedroom flat in need of refurbishment, set on the second floor of a handsome red brick semi-detached Victorian house, situated on the south side of Nassington Road, a quiet residential turning, which affords easy access to the green expanse of Hampstead Heath and amenities of South End Green.

The property currently comprises a large reception, double bedroom, bathroom/WC and kitchen/diner, and also benefits from sole use of a section of the rear garden.

Subject to acquiring the loft space from the Freeholder, and subject to necessary consents, there is also scope to convert the property into a three bedroom flat.

(Local Authority - London Borough of Camden Tel: 020 7974 4444; [www.camden.gov.uk](http://www.camden.gov.uk))

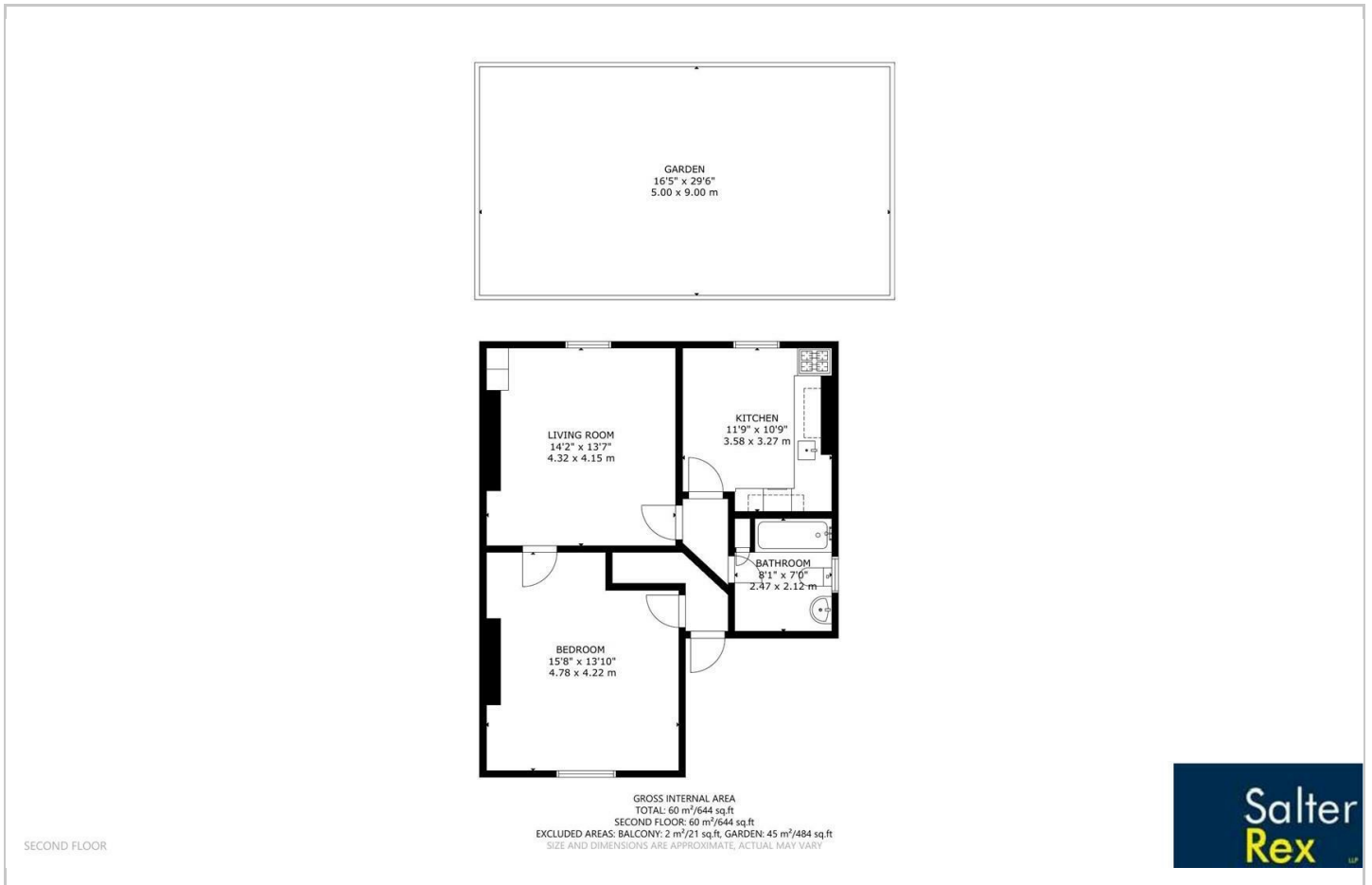
Lease: 125 years from 25/12/83  
Ground Rent: £45 pa (rising)  
Council Tax Band: E

■ Minimum Opening Bid £390,000





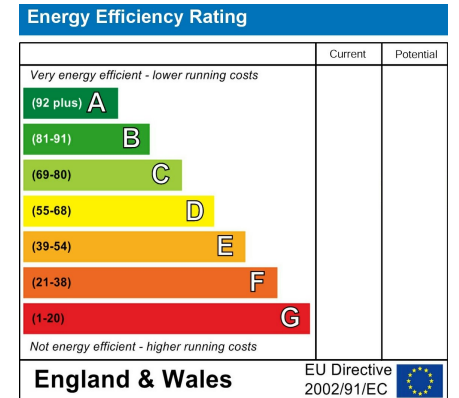
## Floor Plan



## Area Map



## Energy Efficiency Graph



## Viewing

Please contact our Hampstead Sales Office on 020 7431 1881 if you wish to arrange a viewing appointment for this property or require further information.

These particulars, whilst believed to be accurate are set out as a general outline only for guidance and do not constitute any part of an offer or contract. Intending purchasers should not rely on them as statements of representation of fact, but must satisfy themselves by inspection or otherwise as to their accuracy. No person in this firm's employment has the authority to make or give any representation or warranty in respect of the property.

47 South End Road, Hampstead, London, NW3 2QB  
Tel: 020 7431 1881 Email: [hampstead@salter-rex.co.uk](mailto:hampstead@salter-rex.co.uk) [salter-rex.co.uk](http://salter-rex.co.uk)