



Aylett Road, TW7

£750,000

We are delighted to bring to the market this stunning and immaculately presented four bedroom Victorian house located in the heart of Isleworth. Arranged over three floors and offering more than 1,360 square feet of generous living space, this delightful house has a wealth of period character and charm throughout, in addition to a secluded south-east facing garden

Aylett Road enjoys a peaceful setting within a residential cul-de-sac, just moments from Isleworth Train Station, nearby bus links and local amenities. Osterley Underground Station, Hounslow High Street and the picturesque Old Isleworth by the River Thames are all within easy walking distance. The property also benefits from being within the catchment area of several highly regarded schools.

Features

- End Of Terrace House
- Four Bedrooms
- Period Features
- South-East Facing Garden
- Outbuilding/Gym
- Sought After Location

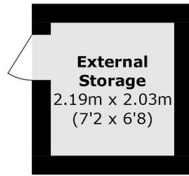


Aylett Road, TW7

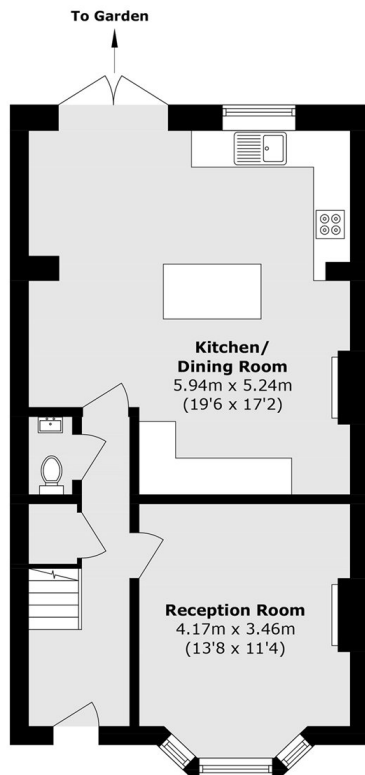
The ground floor features a welcoming entrance hallway leading to an elegant front reception room with a bay window and feature fireplace. To the rear is an impressive open plan kitchen/dining room, the highlight of the home, which opens directly onto a private south-east facing garden which is home to an outbuilding/gym. Upstairs, the first floor offers two spacious double bedrooms (one ensuite) and a stylish family bathroom finished to a high standard. The thoughtfully converted loft provides a further two bedrooms, one of which has a Juliette balcony overlooking the garden.



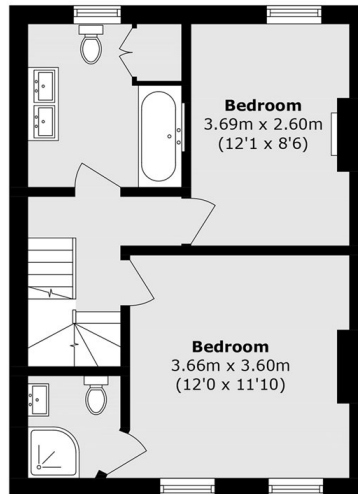
Aylett Road, Isleworth, TW7



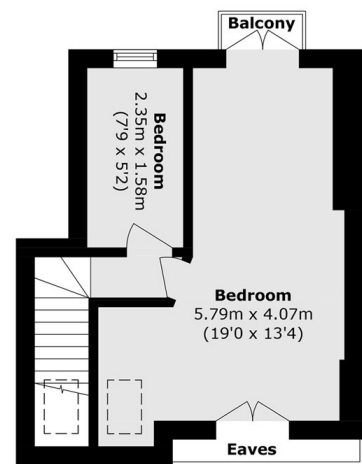
Ground Floor



Ground Floor



First Floor



Second Floor

Total area (approx.): 126.4 sq. m (1360.6 sq. ft)
Balcony area (approx.): 0.9 sq. m (9.7 sq. ft)
External Storage area (approx.): 4.4 sq. m (47.4 sq. ft)
(Excluding Eaves)