

Need a Mortgage in principle to make offers? Call us now for quick assistance!
0121 775 0101



Do you need to sell? Start your journey now! Call us we can help.
01564 777 314



30 Tutnall Drive

Hockley Heath, B94 6SA
Guide Price £800,000

Situated in the village of Hockley Heath, this immaculately presented detached house offers a blend of modern living and spacious accommodation. This exceptional home is not to be missed, offering family-friendly living in a sought-after location.

FEATURES

- Well Presented Detached Family Home
- Dual Aspect Lounge/Dining Room
- Stunning Modern Fitted Kitchen
- Separate Utility Room
- Principal Bedroom with Dressing Area & En-Suite Shower Room
- Two Further Bedrooms, One with an En-Suite
- Two Double Second Floor Bedrooms
- Modern Four Piece Family Bathroom
- Private Rear Garden
- Detached Double Garage & Driveway Parking
- Tudor Grange Academy Catchment

SCAN FOR MORE INFO
SIZE - 1970 Sq Ft
TENURE - Freehold
COUNCIL TAX - Solihull Metropolitan Borough Council - G
BROADBAND - Upload Max 220Mbps Download Max 1800Mbps
MOBILE - Vodafone - 84%, O2 - 82%, EE - 80%, 3 - 74%
EPC - TBA
PARKING - Double Garage & Driveway
FLOODRISK - Very Low
SERVICES - Mains
COVENANTS - N/A

Are you an investor interested in expanding your portfolio?

Call 01564 777 314 to provide your investment criteria for alerts.



Sneak Peeks

Every week, we unveil "Sneak Peeks," a feature showcasing exclusive properties before they hit Rightmove and other platforms.

The Landlord Club

Join our Landlord Club for weekly updates on legislation, market trends, and our Letting Director's 'Investment Pick of the Week' for optimal ROI.

HTSPMD

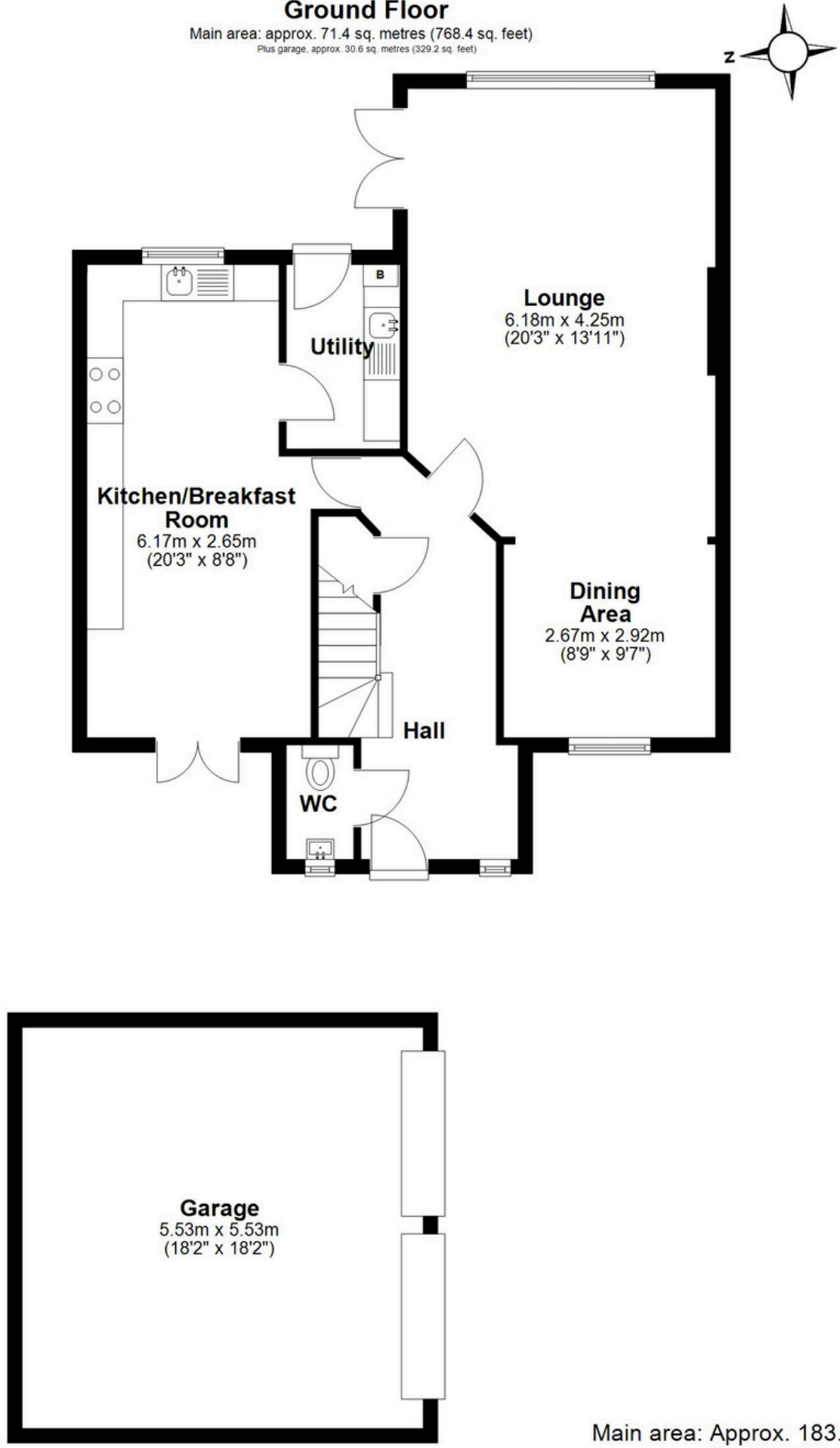
Tune into 'How's The Solihull Property Market Dom' weekly for a quick, insightful snapshot of the market.

The Mortgage Update

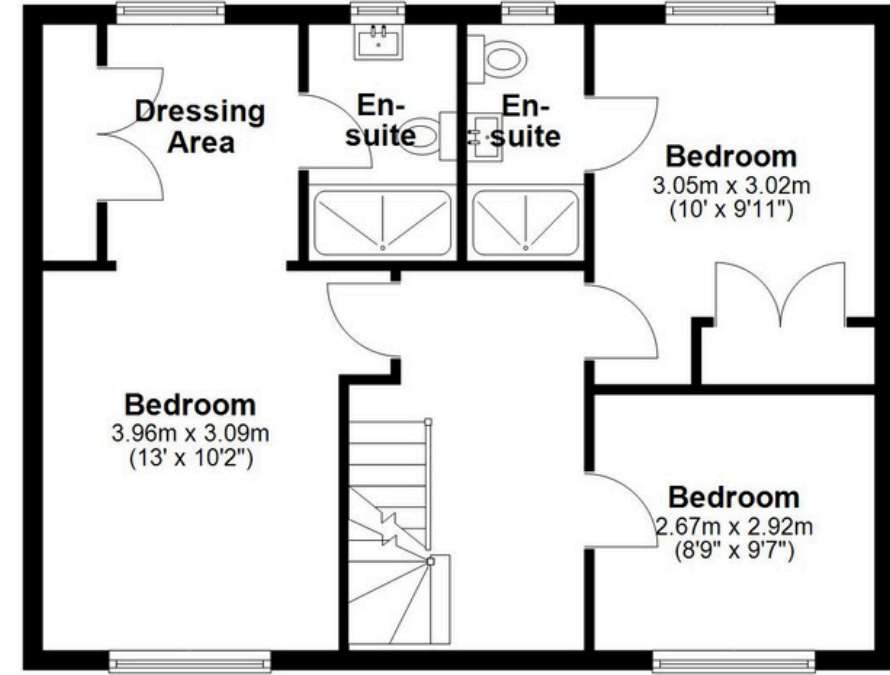
Get weekly insights and the best deals with our Mortgage Update, your shortcut to navigating the complex mortgage landscape confidently.

SCAN TO VIEW OUR WEEKLY FILMS & SUBSCRIBE

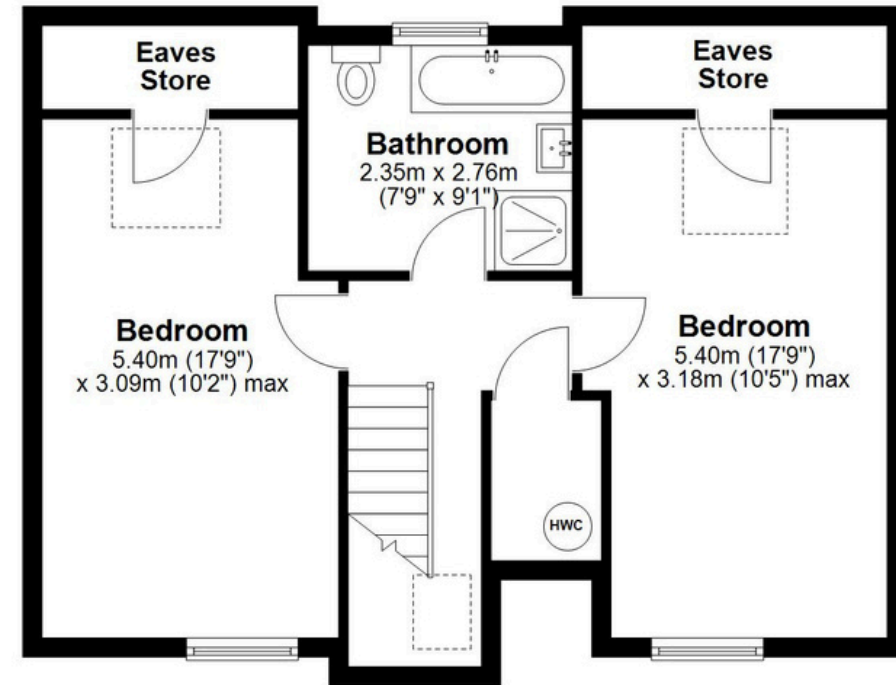
Ground Floor
 Main area: approx. 71.4 sq. metres (768.4 sq. feet)
 Plus garage, approx. 30.6 sq. metres (329.2 sq. feet)



First Floor
 Approx. 56.8 sq. metres (611.5 sq. feet)



Second Floor
 Approx. 54.9 sq. metres (590.5 sq. feet)



Main area: Approx. 183.0 sq. metres (1970.3 sq. feet)
 Plus garage, approx. 30.6 sq. metres (329.2 sq. feet)

This floor plan is for illustration purposes only, this is not intended to be a measured/scaled survey or comply with RICS guidelines. All measurements (including total floor area) openings, orientation and floor area are approximate. No details are guaranteed, they cannot be relied upon for any purpose and do not form part of any agreement. A party must rely upon its own inspection(s). No responsibility is taken for any error, omission, or mis-statement.

Plan produced using PlanUp.