



Guide Price
£400,000

Freehold

3x  2x  2x 

**The Lakes, Larkfield,
Aylesford, Kent, ME20**

OVER 60?

Secure this property
for up to **59% less!**

Wards
Helping you move forwards

Accommodation

GROUND FLOOR

Entrance Hall

Kitchen: 11'11" x 8'2" (3.63m x 2.49m)

Cloakroom

Lounge: 15'7" x 12'0" (4.75m x 3.66m)

FIRST FLOOR

Landing

Dining Room: 12'0" x 12'0" (3.66m x 3.66m)

Balcony

Bathroom

Bedroom 3: 12'0" x 9'3" (3.66m x 2.82m)

SECOND FLOOR

Landing

Bedroom 1: 16'5" x 10'0" (5.01m x 3.05m) narrowing to 12'6" x 3'0" (3.81m x 0.92m)

En-Suite Shower Room

Bedroom 2: 12'1" x 9'4" (3.69m x 2.85m)

OUTSIDE

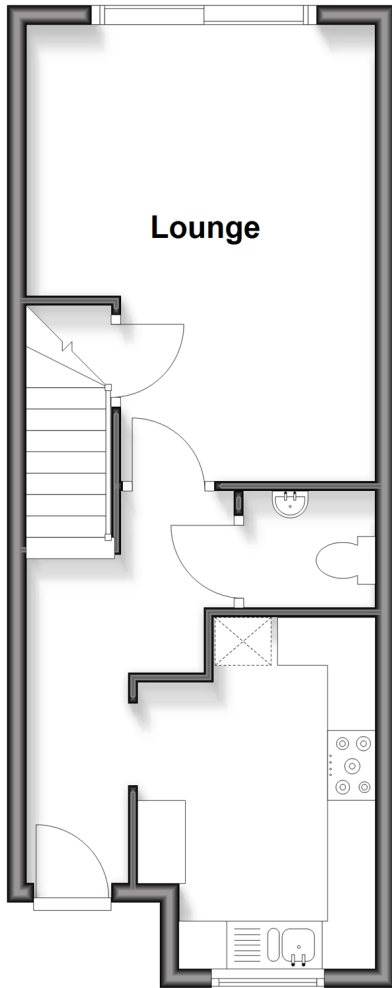
Front & Rear Gardens

Garage En-Bloc

Allocated Parking

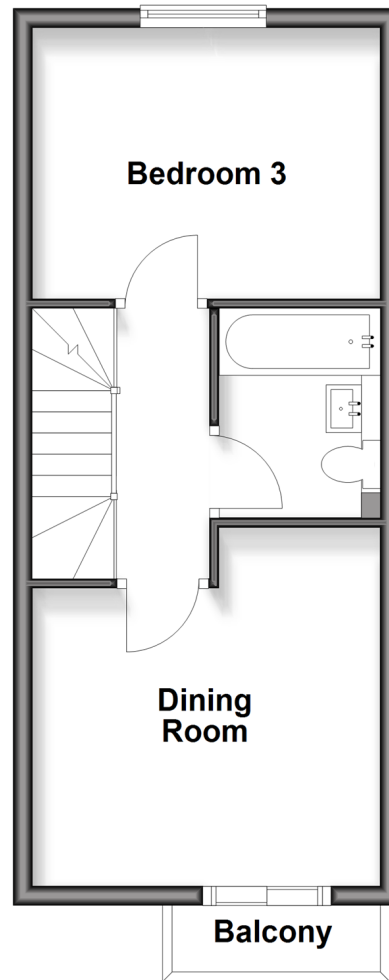
Ground Floor

Approx. 34.6 sq. metres (372.8 sq. feet)



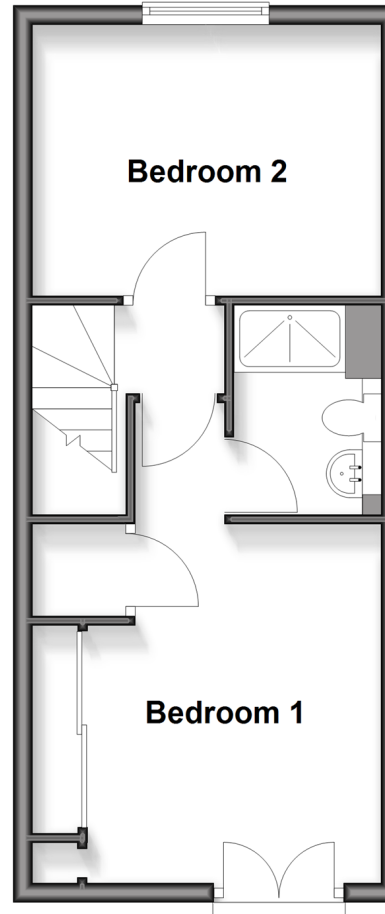
First Floor

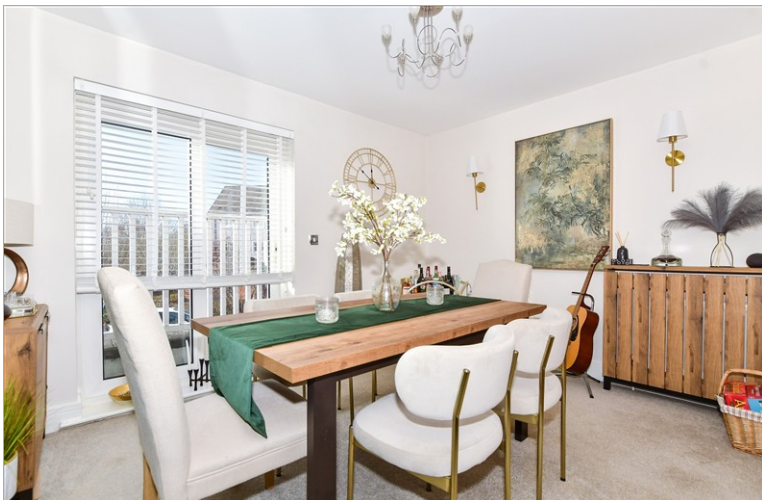
Approx. 32.9 sq. metres (353.8 sq. feet)



Second Floor

Approx. 32.7 sq. metres (352.3 sq. feet)





Main features

- Beautifully presented throughout
- An en-suite shower room plus an en-suite bathroom adds a touch of luxury
- Wonderful walks from your doorstep with the expanse of Leybourne Lakes Country Park
- Good schools & amenities within easy reach
- Excellent transport links by road & rail close by

Nearest Schools

Primary Schools: Lunsford Primary 1.2 miles, Brookfield Junior School 1.2 miles, Aylesford Primary 1.4 miles.
Secondary Schools: Holmesdale Technology College 2.0 miles, The Malling School 2.0 miles, Grange Park School 2.3 miles

Transport Information

Train Stations: New Hythe 0.9 miles, West Malling 1.9 miles, Aylesford 2.4 miles, East Malling 2.4 miles

Address

The Lakes, Larkfield, Aylesford, Kent, ME20

Directions

For directions to this property please contact us.



Wards
Helping you move forwards

Call Larkfield Branch 01732 847877 ■ wardsofkent.co.uk



- Legal advice should be taken to verify fixtures/fittings, planning, alterations and/or lease details
- Appliances & services are untested, dimensions are approximate and floor plans are not to scale
- Through a Homewise Home For Life Plan people aged 60+ can secure this property for up to 59% less, by purchasing a Lifetime Lease



12935688/20260220/BB/JT