



Colehill Gardens, SW6

£750,000

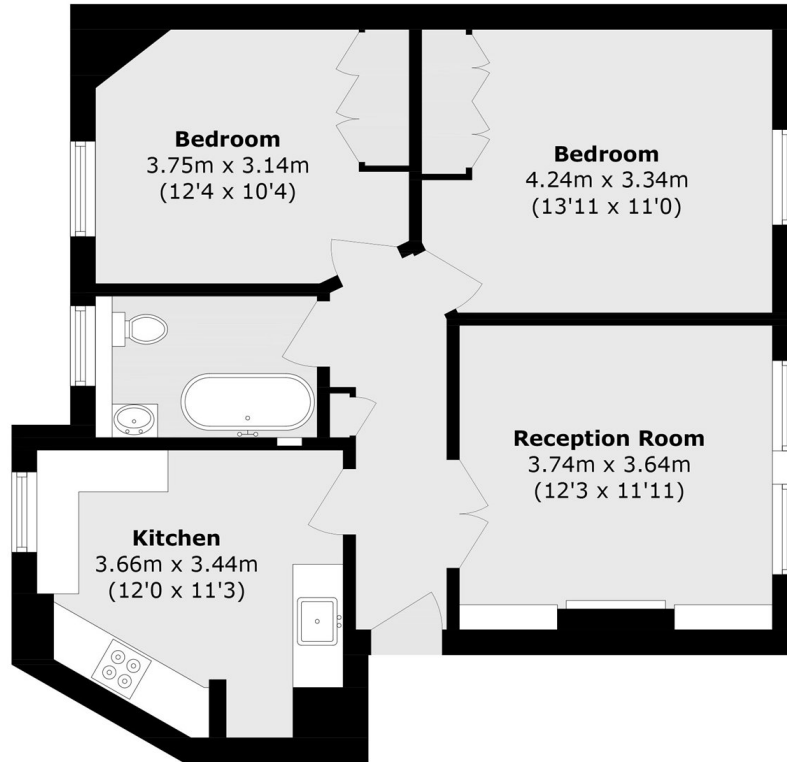
A meticulously renovated two bedroom apartment set on the first floor of a desirable red-brick mansion block. The property has been stripped back to brick and custom-designed to be bespoke and stylish, whilst incorporating classic period features

Colehill Gardens is situated off Fulham Palace Road, directly across from the green spaces of Bishops Park and the River Thames. This desirable residential enclave offers excellent access to the local amenities of Fulham Road and Parsons Green.

Features

- Design-led Renovation
- Two Bedrooms
- Share Of Freehold
- No Chain
- Communal Gardens
- Bishops Park

Colehill Gardens, London, SW6



First Floor

Total area (approx.): 63.3 sq. m (681.3 sq. ft)