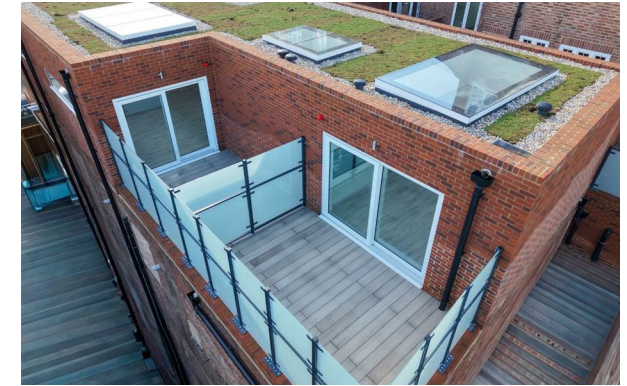


Rolfe East



Northfield Avenue, Ealing, W13 9QS

£2,050 Per Month

- Stunning brand new luxury development to let
- Two private terraces (front and rear)
- Available to move into in July 2026
- Must be viewed!
- Superb Northfields Location
- Skylight windows
- Unfurnished
- Stunning One bedroom apartment
- Close to public transport links and parks
- Own private entrance

289 Northfield Avenue, Ealing, W5 4XB
020 8579 1111

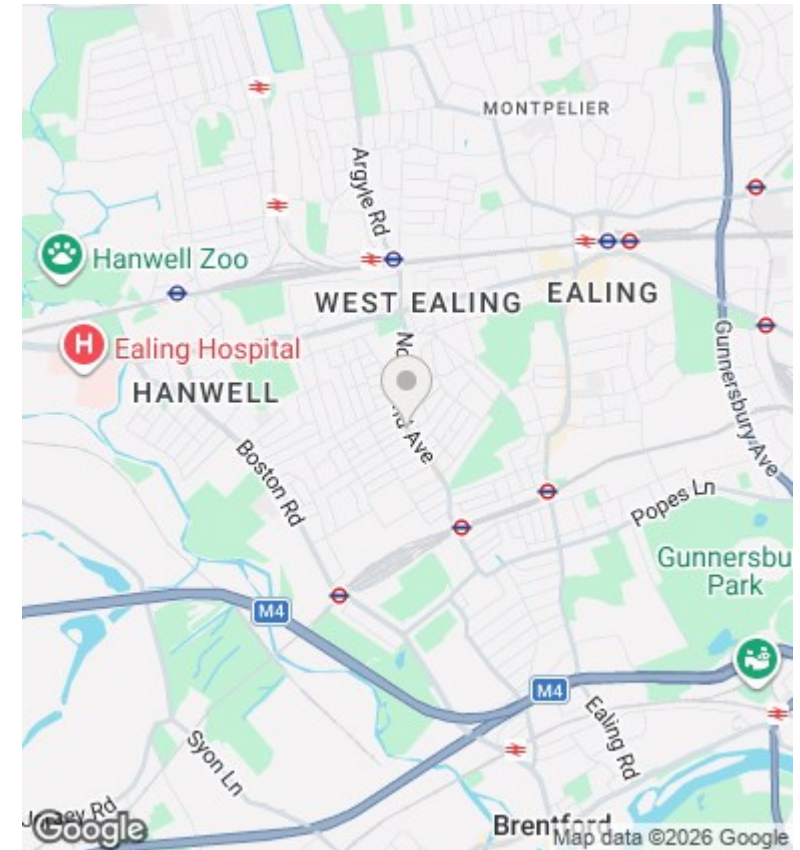
northfieldslettings@rolfe-east.com
<https://www.rolfe-east.com/>

Northfield Court

NORTHFIELD AVENUE | W13



Flat 8		
Kitchen/Dining Room	25' X 16'10"	(7.6m X 5.1m)
Bedroom 1	12'9 X 12'5"	(3.9m X 3.8m)
Bathroom	11'3 X 7'	(3.4m X 2.1m)
Terrace	16'9 X 10'3"	(5.1m X 3.1m)



Directions

Viewings

Viewings by arrangement only. Call 020 8579 1111 to make an appointment.

Council Tax Band

New Build

EPC Rating:

C

Energy Efficiency Rating		
	Current	Potential
Very energy efficient - lower running costs		
(92 plus) A		
(81-91) B		
(69-80) C	80	80
(55-68) D		
(39-54) E		
(21-38) F		
(1-20) G		
Not energy efficient - higher running costs		
England & Wales	EU Directive 2002/91/EC	