



Trebovir Road, SW5

£495,000

Dexters



Trebovir Road, SW5

Situated on the prestigious Trebovir Road, this well-proportioned one-bedroom apartment features a bright living room and bedroom, both enhanced by generous sash windows that flood the space with natural daylight. The property benefits from elegant hardwood floors throughout, a sleek side kitchen, and a spacious bedroom complete with a large built-in wardrobe. A newly renovated bathroom with smart-controlled independent underfloor heating adds a contemporary, luxurious touch.

The generous layout has been thoughtfully designed to provide both comfort and practicality, with an impressive amount of built-in storage seamlessly integrated across the apartment. Ideal for professionals or couples, this apartment combines classic period charm with modern convenience in one of Central London's most desirable locations.

Trebovir Road is within a short walking distance from Earl's Court Tube Station offering the District & Circle Lines and the Piccadilly Line. The location also offers a fantastic selection of local shops, supermarkets, bars and restaurants, as well as easy access out of London via the A4/M4.

Features

Walking Distance Of Amenities

Earls Court Station

No Ongoing Chain

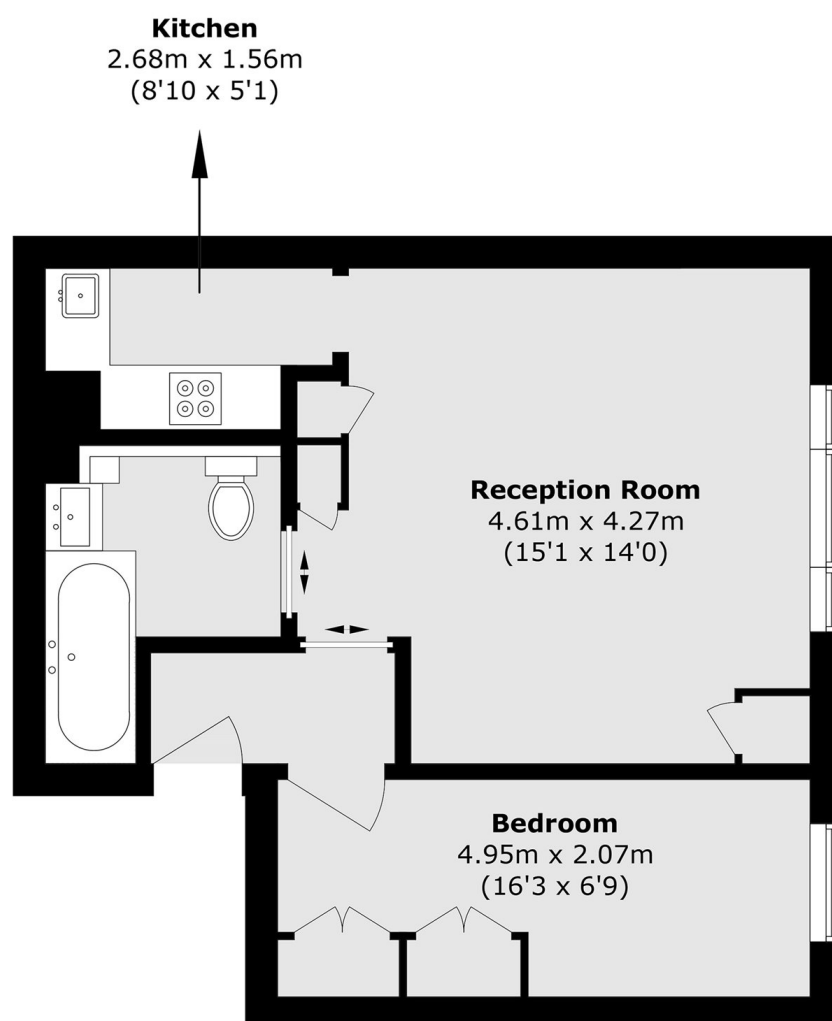
Abundance Of Storage

High Ceilings

Natural Light Throughout



Trebovir Road, London, SW5



Second Floor

Total area (approx.): 43.5 sq. m (468.2 sq. ft)