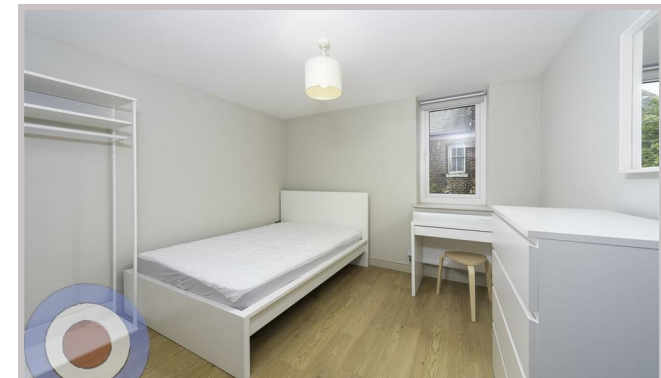


WELCOME TO MANCHESTER LETTINGS

Rooms in Flat 2,
32 Swinton Grove
Manchester
M13 0EU



Rooms in Flat 2, 32 Swinton Grove £650 Per month

SINGLE ROOMS AVAILABLE IN STUDENT PROPERTY AVAILABLE ON 01/07/26

£165ppw with bills included

This very unique 8-bedroom duplex apartment is just a short walk from the university and MRI, offering a rare chance to live in a beautifully restored historical building. Full of character, the property combines original features such as high ceilings, French solid oak parquet flooring and timber cladding with modern comforts.

The sleek kitchen features quartz countertops and café-style shutters on the windows, allowing natural light to flood the space. There are two bathrooms blending modern tiling with traditional wooden panelling, and a suntrap at the front provides a bright outdoor space. The property also includes electric gates, a shared garden, all bills included, low deposit, and communal cleaning.

This apartment is perfect for students looking for a stylish, central, and unique home with plenty of space and character.

- LOW DEPOSIT
- COMMUNAL CLEANING INCLUDED
- ALL DOUBLE BEDROOMS
- ENERGY EFFICIENT HOUSE C OR ABOVE
- ELECTRIC GATES

Local Authority
Manchester

Council Tax Band Exempt

EPC Rating C

Contact

01613992619

hello@welcometomanchesterlettings.com

www.welcometomanchesterlettings.com

