



WAYNE DIGGINS

exp[®] UK

@ wayne.diggins@exp.uk.com

waynediggins.exp.uk.com

07715 925 332

Sawcotts Way, Grays, RM16 2DG

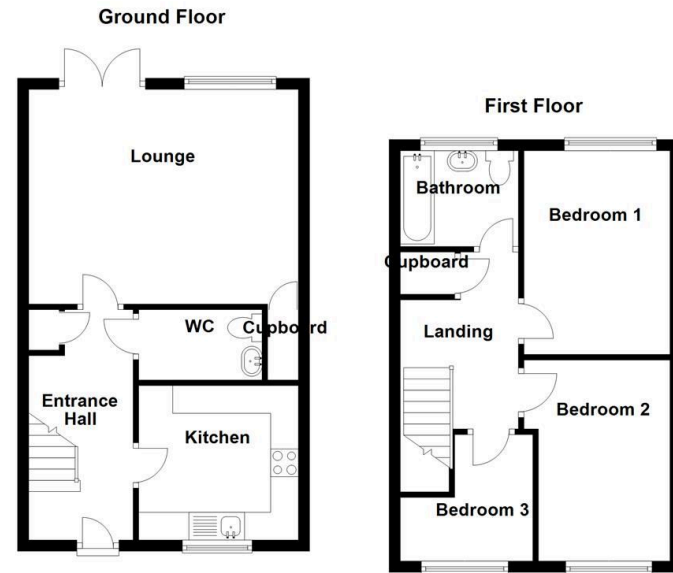
Offers Over £410,000

3 1 1



- Three well-proportioned bedrooms
- Ground floor W.C
- Modern three-piece family bathroom
- Modern fitted kitchen
- Close to Lakeside, shops, schools & excellent transport links
- Ref: WD 1273
- Spacious lounge with French doors to the garden
- Good-size rear garden with lawn, patio & seating area
- Off-street parking
- Early viewing advised





HAVE A LOOK AT THIS BEAUTIFUL HOME ON OFFER!!! Ref: WD1273 - This stunning three-bedroom semi-detached home, set within the sought-after Woodside Development, is beautifully presented throughout and ready to move straight into. Offering a spacious layout, modern finishes, and a generous rear garden, it's the perfect choice for families, first-time buyers, or anyone looking for a home close to excellent local amenities. The ground floor comprises a stylish modern fitted kitchen, a convenient downstairs W.C, and a bright, airy lounge with French doors that open directly onto the garden, filling the room with natural light and creating an inviting space for entertaining or relaxing. Upstairs, a spacious landing with loft access leads to three well-proportioned bedrooms and a modern three-piece family bathroom suite. Externally, this property really shines.

