



GUIDE PRICE

£950,000

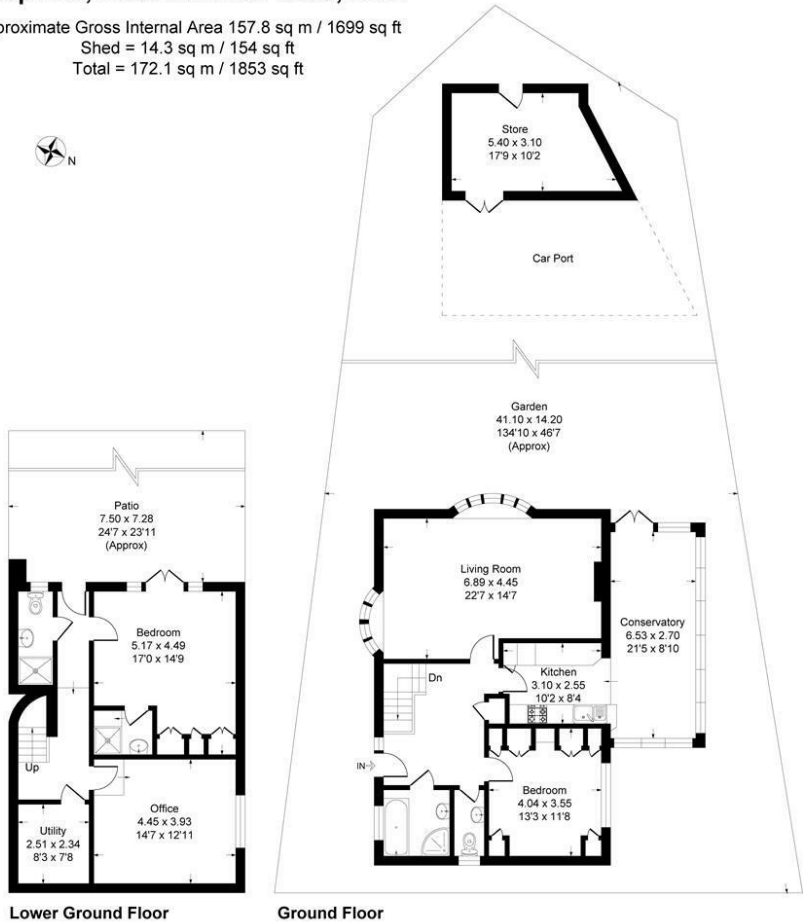
West Common Road

Hayes, BR2 7BY

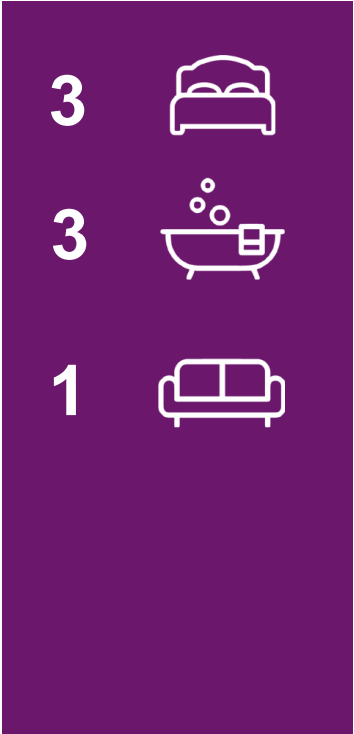
EPC RATING: COUNCIL TAX BAND: E

Deep End, West Common Road, BR2

Approximate Gross Internal Area 157.8 sq m / 1699 sq ft
Shed = 14.3 sq m / 154 sq ft
Total = 172.1 sq m / 1853 sq ft



This plan is for layout guidance only. Not drawn to scale unless stated. Windows and door openings are approximate. Whilst every care is taken in the preparation of this plan, please check all dimensions, shapes and compass bearings before making any decisions reliant upon them.
Produced By Planpix



| Energy Efficiency Rating | | |
|---|-------------------------|-----------|
| | Current | Potential |
| Very energy efficient - lower running costs | | |
| (92 plus) A | | |
| (81-91) B | | |
| (69-80) C | | |
| (55-68) D | | |
| (39-54) E | | |
| (21-38) F | | |
| (1-20) G | | |
| Not energy efficient - higher running costs | | |
| England & Wales | EU Directive 2002/91/EC | |



Agents Note: Whilst every care has been taken to prepare these particulars, they are for guidance purposes only. All measurements are approximate and are for general guidance purposes only and whilst every care has been taken to ensure their accuracy, they should not be relied upon and potential buyers/tenants are advised to recheck the measurements



OFFICE ADDRESS
49 Station Approach
Hayes
Kent
BR2 7EB

OFFICE DETAILS
020 8462 0360
infohy@sinclairhammelton.co.uk