

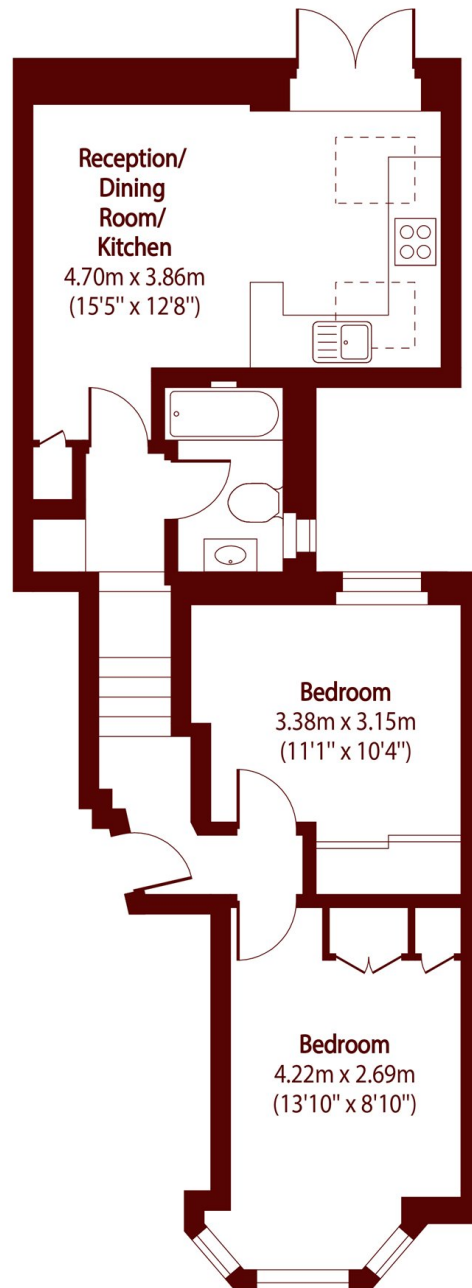


Vespan Road, W12

£500,000



- Period Two-Bedroom Flat
- Open-plan Kitchen
- High-quality Finish Throughout
- Private Garden
- Skylights With Natural Light
- Ideal For First-Time Buyers



Total area (approx): 47.01 sq m (506 sq. ft)

Marsh & Parsons Askew Road

120 Askew Road, London,
W12 9BL
020 8102 0123