



Price

£625,000

Freehold

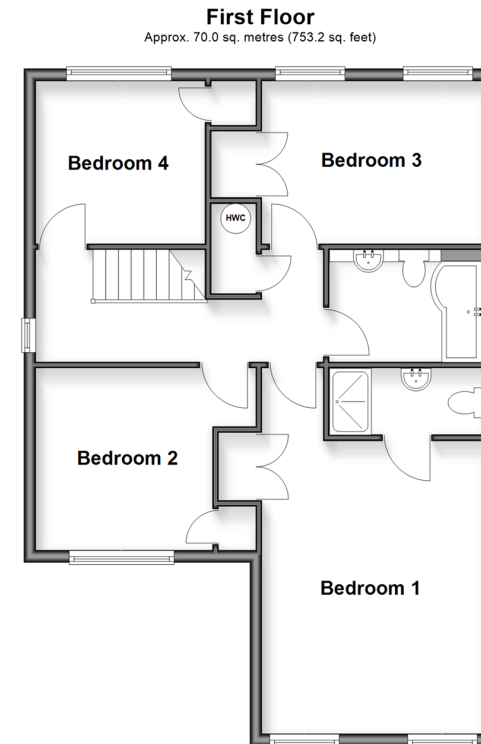
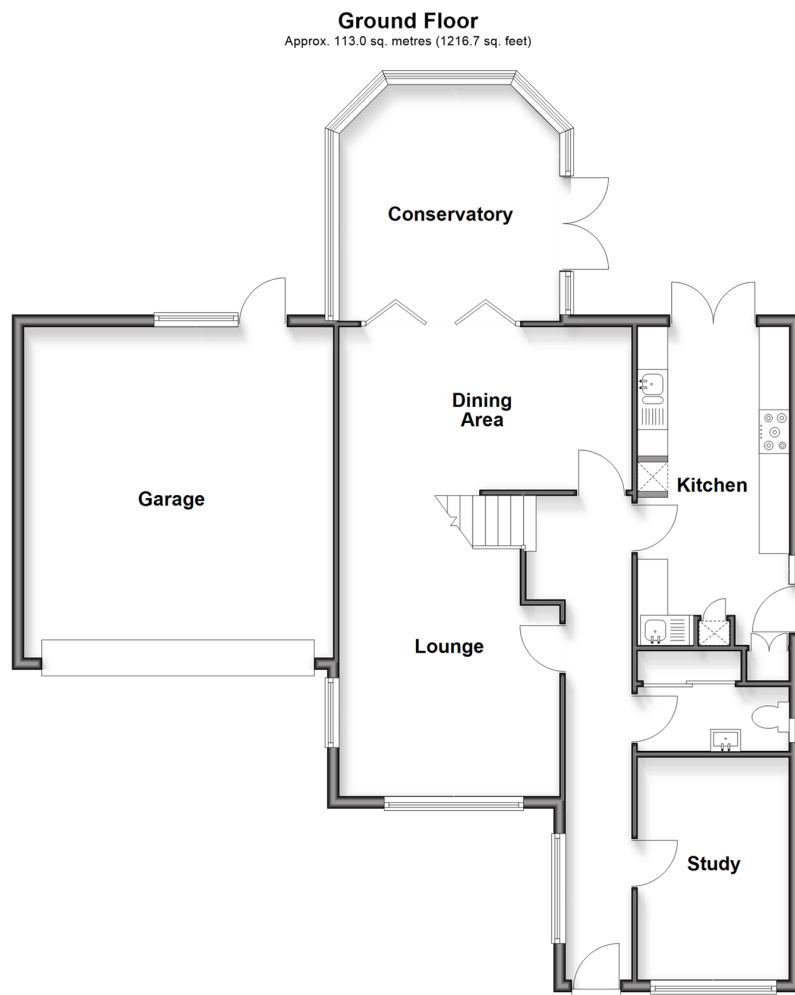
4x  2x  2x 

**Forrester Road,
Partridge Green,
Horsham, West Sussex,
RH13**

OVER 60?

Secure this property
for up to **59% less!**

cubitt&west
Helping you move forwards



Accommodation

GROUND FLOOR

Entrance Hall
Study: 12'3 x 8'3 (3.74m x 2.52m)
Cloakroom
Lounge: 16'8 x 12'2 (5.08m x 3.71m)
Dining Area: 16'0 x 8'9 (4.88m x 2.67m)
Conservatory: 12'9 x 10'9 (3.89m x 3.28m)
Kitchen: 17'4 x 8'3 (5.29m x 2.52m)

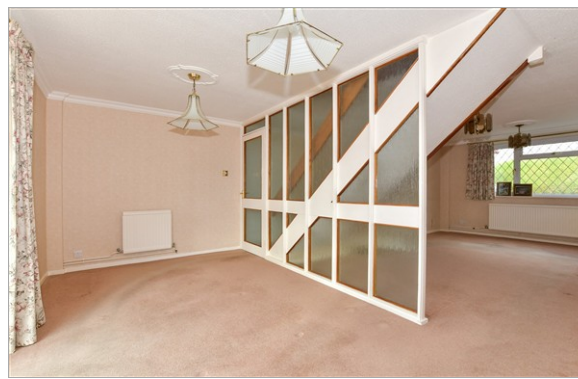
FIRST FLOOR

Landing
Bedroom 1: 16'6 x 12'5 (5.03m x 3.79m)
En Suite Shower Room: 8'8 x 4'0 (2.64m x 1.22m)
Bedroom 2: 12'5 x 8'3 (3.79m x 2.52m)
Bedroom 3: 10'2 x 9'8 (3.10m x 2.95m)

Bedroom 4: 9'7 x 8'6 (2.92m x 2.59m)
Bathroom: 8'7 x 6'2 (2.62m x 1.88m)

OUTSIDE

Summerhouse: 10'5 x 10'5 (3.18m x 3.18m)
Garage: 18'5 x 15'7 (5.62m x 4.75m)
Off Road Parking
Front & Rear Garden



Main features

- A fantastic family home in a popular village
- Just a short walk to the local primary school and busy high street
- Extended in 2018, the property now has extensive accommodation
- Large attached double garage plus driveway parking
- Spacious conservatory overlooks the sunny rear garden and summer house



Nearest Schools

Primary Schools: Jolesfield CofE Primary 0.1 miles, St Peter's CofE Primary 2.1 miles, Ashurst CofE Primary 2.2 miles. Secondary Schools: Farney Close School 5.2 miles, Christ's Hospital 6.1 miles, Muntham House School 6.5 miles.



Transport Information

Train Stations: Christs Hospital 6.6 miles, Horsham 7.1 miles, Billingshurst 7.2 miles



Address

Forrester Road, Partridge Green, Horsham, West Sussex, RH13



Directions

For directions to this property please contact us.



cubitt&west
Helping you move forwards

Call Horsham Branch 01403 269268 ■ cubittandwest.co.uk



■ Legal advice should be taken to verify fixtures/fittings, planning, alterations and/or lease details ■ Appliances & services are untested, dimensions are approximate and floor plans are not to scale
■ Through a Homewise Home For Life Plan people aged 60+ can secure this property for up to 50% less, by purchasing a Lifetime Lease.



20918071/20251103/SEH/CB