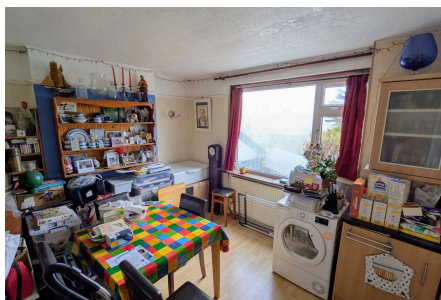


## Newlyn, Penzance TR18

Guide Price £230,000

3 1 1



A three bedroom semi-detached home that can be found in an elevated position above the fishing village of Newlyn and offers lovely views from the rear elevation to Mounts Bay, St Michaels Mount and beyond. The property, despite requiring modernisation, benefits from uPVC double glazing and a raised courtyard garden to the rear.

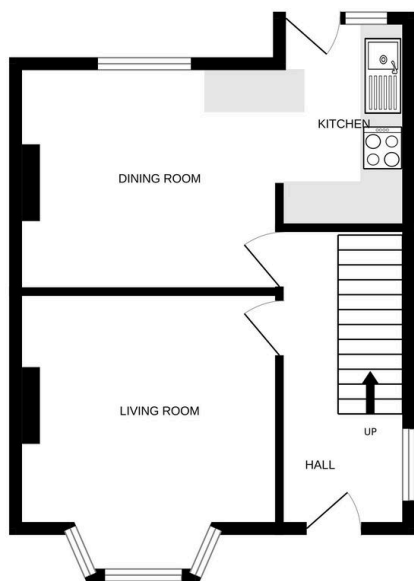


ANDREW  
EXELBY  
ESTATE AGENTS

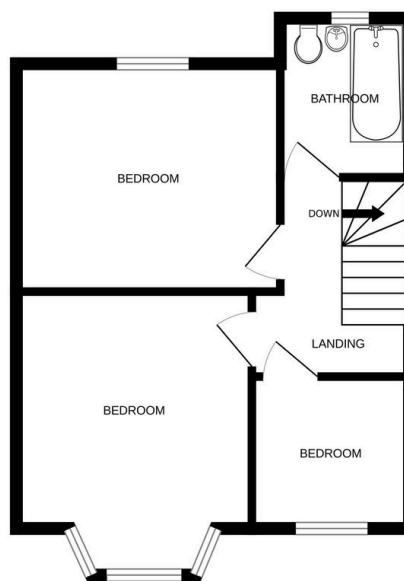
## Key Features

- THREE BEDROOM END OF TERRACE HOME
- ELEVATED POSITION WITH VIEWS TO MOUNTS BAY
- REQUIRES MODERNISATION
- UPVC DOUBLE GLAZING
- GAS CENTRAL HEATING
- REAR COURTYARD GARDEN
- EPC RATING - D63 / COUNCIL TAX BAND - B
- 
- 

GROUND FLOOR



1ST FLOOR



Whilst every attempt has been made to ensure the accuracy of the floorplan contained here, measurements of doors, windows, rooms and any other items are approximate and no responsibility is taken for any error, omission or mis-statement. This plan is for illustrative purposes only and should be used as such by any prospective purchaser. The services, systems and appliances shown have not been tested and no guarantee as to their operability or efficiency can be given.  
Made with Metropix ©2025