



Salehurst Road, SE4

£860,000

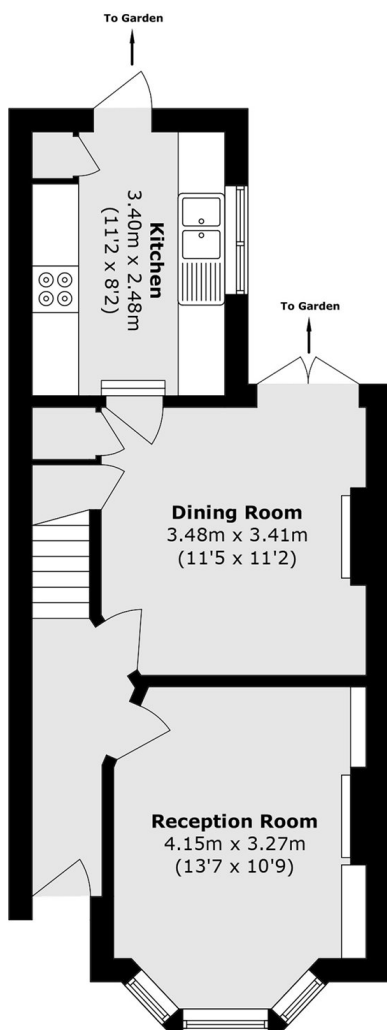
This stunning Victorian family home has been renovated to an exceptional standard throughout. The property benefits from having three bedrooms, a characterful reception room and a separate dining room with Crittall style doors leading out to a well sized rear garden with well maintained grass and paved areas.

Salehurst Road is close to both Crofton Park and Honor Oak Park stations. Crofton Park station provides Thameslink services into Blackfriars and St Pancras. Honor Oak Park offers services into London Bridge and London Overground services towards Shoreditch.

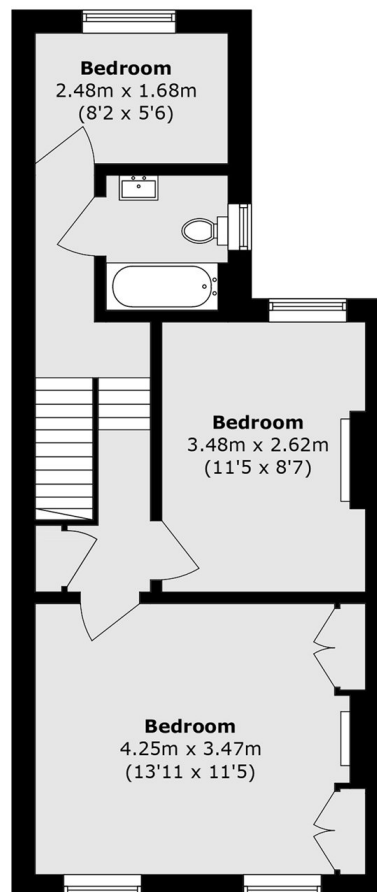
Features

- Victorian
- Bay Fronted Reception Room
- Well Maintained Rear Garden
- Desirable Location
- Close To Stations
- Potential To Extend

Salehurst Road, London, SE4



Ground Floor



First Floor

Total area (approx.): 79.1 sq. m (851.4 sq. ft)