

# MATTHEW JAMES

Residential Sales • Lettings • Management



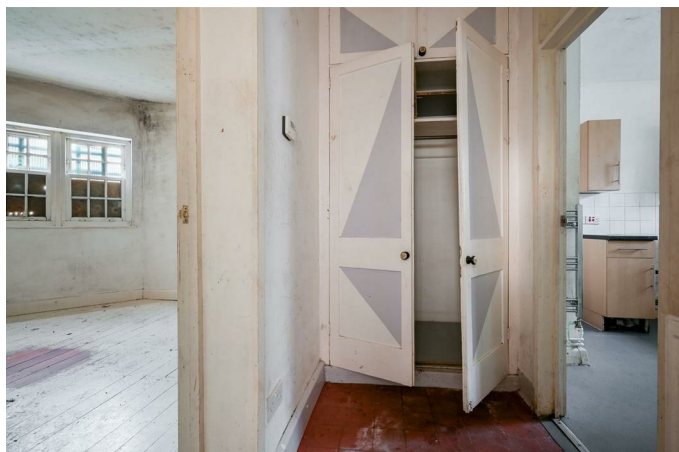
St Anthony's Flats Aldenham Street, London, NW1 1SA

**Asking Price £255,000**

Matthew James offer for sale a ground floor studio flat requiring refurbishment. Located centrally and close to London Euston and St Pancras International Stations, whilst to the west and within walking distance are the wide open green spaces of Regents Park, Camden Town with its famous bustling market is a short walk north and well located for access to both Central and the West End of London with its array of attractions. Available for sale chain free. Mixed tenure block.

## Ground Floor

### Entrance Hall



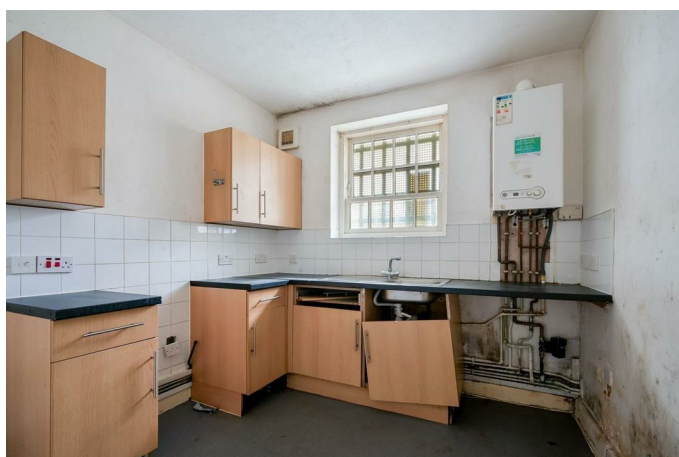
Built-in cupboards, wooden floor.

### Studio Room



Windows to front, wooden floor.

### Kitchen



Window, kitchen requires re-fitting

## Bathroom



Window, bathroom requires re-fitting.

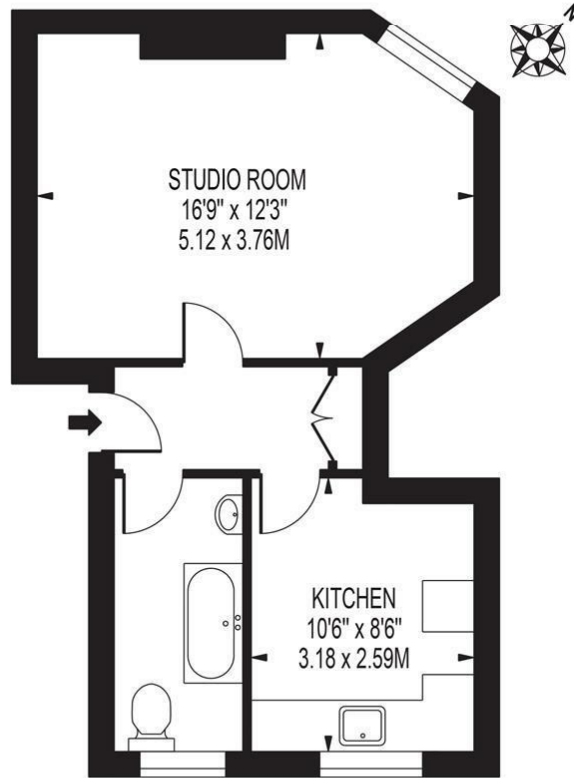
### Additional Information

New 250 year lease to be granted  
No ground rent  
Service charge for 2025 / 26 £1014.97  
Camden Council Tax Band A  
Chain Free

# Floor Plan

## ST. ANTHONYS

APPROXIMATE GROSS INTERNAL FLOOR AREA: 380 SQ FT - 35.32 SQ M

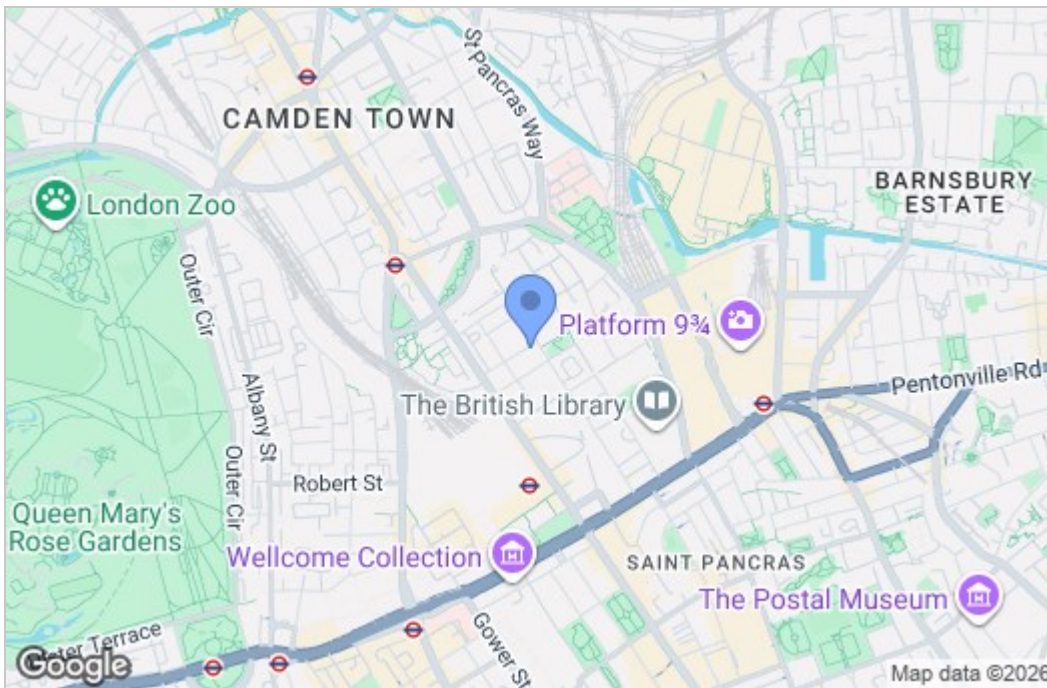


### GROUND FLOOR

FOR ILLUSTRATION PURPOSES ONLY

THIS FLOOR PLAN SHOULD BE USED AS A GENERAL OUTLINE FOR GUIDANCE ONLY AND DOES NOT CONSTITUTE IN WHOLE OR IN PART AN OFFER OR CONTRACT. ANY INTENDING PURCHASER OR LESSEE SHOULD SATISFY THEMSELVES BY INSPECTION, SEARCHES, ENQUIRIES AND FULL SURVEY AS TO THE CORRECTNESS OF EACH STATEMENT. ANY AREAS, MEASUREMENTS OR DISTANCES QUOTED ARE APPROXIMATE AND SHOULD NOT BE USED TO VALUE A PROPERTY OR BE THE BASIS OF ANY SALE OR LET.

# Area Map



# Energy Efficiency Graph

Energy Efficiency Rating		Current	Potential
<i>Very energy efficient - lower running costs</i>			
(92 plus) <b>A</b>			
(81-91) <b>B</b>			
(69-80) <b>C</b>			
(55-68) <b>D</b>			
(39-54) <b>E</b>			
(21-38) <b>F</b>			
(1-20) <b>G</b>			
<i>Not energy efficient - higher running costs</i>			
<b>England &amp; Wales</b>		EU Directive 2002/91/EC	
Environmental Impact (CO <sub>2</sub> ) Rating		Current	Potential
<i>Very environmentally friendly - lower CO<sub>2</sub> emissions</i>			
(92 plus) <b>A</b>			
(81-91) <b>B</b>			
(69-80) <b>C</b>			
(55-68) <b>D</b>			
(39-54) <b>E</b>			
(21-38) <b>F</b>			
(1-20) <b>G</b>			
<i>Not environmentally friendly - higher CO<sub>2</sub> emissions</i>			
<b>England &amp; Wales</b>		EU Directive 2002/91/EC	

These particulars, whilst believed to be accurate are set out as a general outline only for guidance and do not constitute any part of an offer or contract. Intending purchasers should not rely on them as statements of representation of fact, but must satisfy themselves by inspection or otherwise as to their accuracy. No person in this firm's employment has the authority to make or give any representation or warranty in respect of the property.

43- 45 Fortess Road, Kentish Town, London, NW5 1AD

Tel: 020 7284 4343 Email: als@matthewjames.co.uk www.matthewjames.co.uk