



Manor Road, TW9

£1,700 Per calendar month

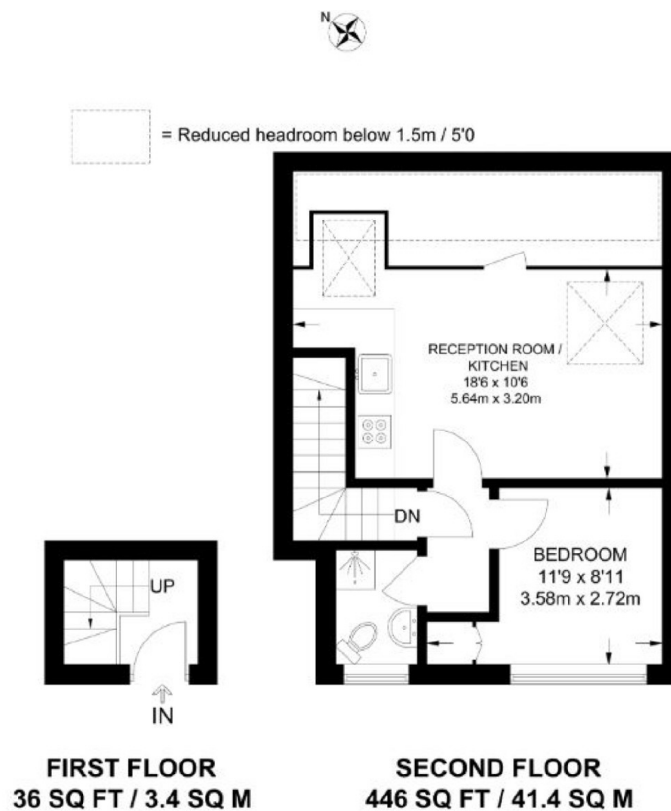
Located close to the open green spaces of Richmond Park, this one bedroom apartment is well maintained throughout and offers an open-plan living.

Manor Road offers a variety of local amenities and is within easy reach of the many fashionable shops, trendy bars and restaurants of Richmond town centre and the open green spaces of Richmond Park.

Features

- One Bedroom
- Top Floor
- Open Plan Kitchen
- Fitted Wardrobes
- Ample Storage
- Close to Richmond Park

Manor Road, Richmond, TW9



APPROXIMATE GROSS INTERNAL AREA
482 SQ FT / 44.8 SQ M

This plan has been drawn for illustrative and identification purposes only.