



Eddington Crescent, WELWYN GARDEN CITY AL7 4SQ

welcome to

Eddington Crescent, WELWYN GARDEN CITY

Situated in the highly sought-after Eddington Crescent development, this beautifully presented four-bedroom townhouse offers spacious and versatile living across three floors. Ideally located just 1.5 miles from Welwyn Garden City Station and 2 miles from Hatfield Station, it provides excellent transport links for commuters. The ground floor features a welcoming entrance hall, a convenient downstairs cloakroom, and a bright lounge with French doors opening onto a private rear garden. The modern open-plan kitchen and dining area create the perfect space for family living and entertaining. On the first floor, you will find two generous bedrooms and shower room. The second floor offers two further bedrooms with an en-suite to bedroom one. Externally, the property benefits from a private rear garden, allocated parking, and a garage en bloc. Additional features include gas central heating and double glazing throughout, ensuring comfort and efficiency. This exceptional home combines modern design with practical living, making it ideal for families or professionals.



Cloakroom

Tiled, W/C, wash hand basin, heated towel rail.

Lounge

15' 6" x 11' 6" (4.72m x 3.51m)

French door to garden, double glazed window to rear, wooden flooring, radiator.

Kitchen/Diner

16' 5" x 8' 9" (5.00m x 2.67m)

Double glazed window to front, wooden flooring, breakfast bar, gas hob/electric oven, sink/drainers, radiator.

Landing

Carpet, radiator.

Bedroom One (Second Floor)

15' 5" x 10' 3" (4.70m x 3.12m)

Double glazed window to rear x 2, wooden flooring, radiator.

En-Suite

Tiled flooring, W/C, shower cubicle, wash hand basin, heated towel rail.

Bedroom Two (second Floor)

15' x 8' 2" (4.57m x 2.49m)

Double glazed window to front x 2, wooden flooring, radiator.

Bedroom Three (First Floor)

15' 6" x 10' 2" (4.72m x 3.10m)

Double glazed window to rear x 2.

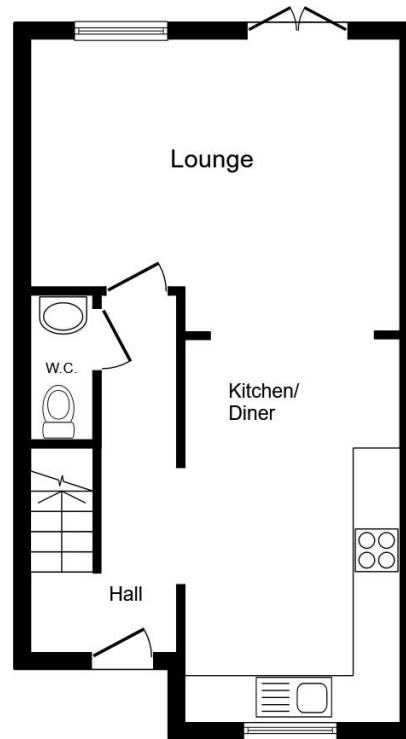
Bedroom Four (First Floor)

8' 10" x 8' 7" (2.69m x 2.62m)

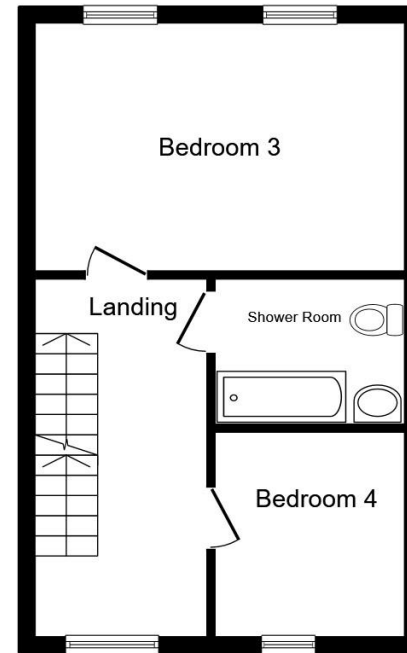
Double glazed window to front, wooden flooring, radiator.

Shower Room

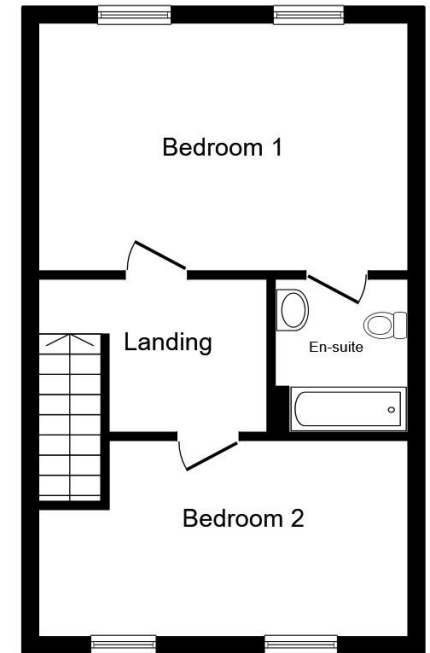
Tiled flooring, shower cubicle, W/C, wash hand basin, heated towel rail.



Ground Floor



First Floor



Second Floor

Total floor area 113.5 m² (1,221 sq.ft.) approx

This floor plan is for illustrative purposes only. It is not drawn to scale. Any measurements, floor areas (including any total floor area), openings and orientation are approximate. No details are guaranteed, they cannot be relied upon for any purpose and they do not form part of any agreement. No liability is taken for any error, omission or misstatement. A party must rely upon its own inspection(s). Powered by www.propertybox.io


william
h brown



check out more properties at williamhbrown.co.uk



welcome to

Eddington Crescent, WELWYN GARDEN CITY

- End of Terrace Town House
- Four Bedrooms
- Downstairs Cloakroom
- Allocated Parking & Garage En-Bloc
- En-Suite to Bedroom One

Tenure: Freehold EPC Rating: C
Council Tax Band: E



guide price

£550,000



check out more properties at williamhbrown.co.uk



Property Ref:
WGN108455 - 0002

1. MONEY LAUNDERING REGULATIONS Intending purchasers will be asked to produce identification documentation at a later stage and we would ask for your co-operation in order that there is no delay in agreeing the sale. 2. These particulars do not constitute part or all of an offer or contract. 3. The measurements indicated are supplied for guidance only and as such must be considered incorrect. Potential buyers are advised to recheck measurements before committing to any expense. 4. We have not tested any apparatus, equipment, fixtures or services and it is in the buyers interest to check the working condition of any appliances. 5. Where an EPC, or a Home Report (Scotland only) is held for this property, it is available for inspection at the branch by appointment. If you require a printed version of a Home Report, you will need to pay a reasonable production charge reflecting printing and other costs. 6. We are not able to offer an opinion either written or verbal on the content of these reports and this must be obtained from your legal representative. 7. Whilst we take care in preparing these reports, a buyer should ensure that his/her legal representative confirms as soon as possible all matters relating to title including the extent and boundaries of the property and other important matters before exchange of contracts.

William H Brown is a trading name of Sequence (UK) Limited which is registered in England and Wales under company number 4268443, Registered Office is Cumbria House, 16-20 Hockliffe Street, Leighton Buzzard, Bedfordshire, LU7 1GN. VAT Registration Number is 500 2481 05.


william h brown



01707 324361



WelwynGardenCity@williamhbrown.co.uk



53 Wigmores North, WELWYN GARDEN CITY,
Hertfordshire, AL8 6PG



williamhbrown.co.uk

Please note the marker reflects the
postcode not the actual property