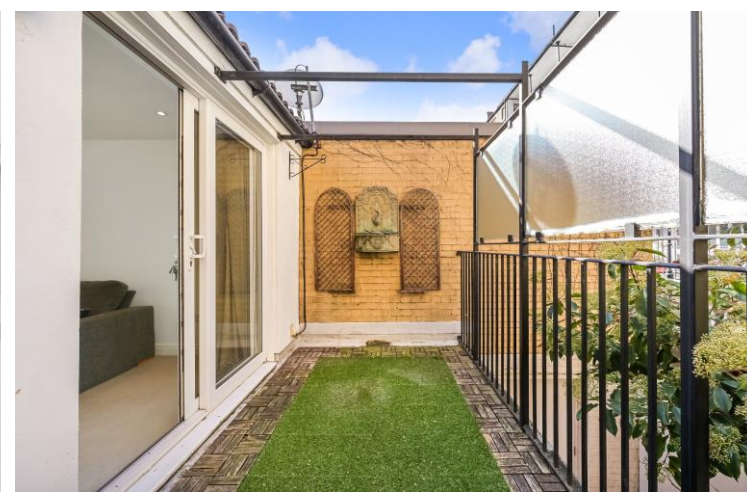




Romney Mews  
Marylebone, W1U

CHESTERTONS





We are delighted to present this unique opportunity to rent a charming mews home, discreetly positioned on Romney Mews, a secure gated setting just off the prestigious Chiltern Street in the heart of Marylebone.

Arranged over two floors, the property is bright and modern throughout. The ground floor comprises a welcoming hallway, two well-proportioned bedrooms and a contemporary bathroom. A striking light feature above the staircase allows natural light to flow between floors. On the first floor, you will find a spacious living room with access to a private balcony, along with a separate modern kitchen fitted with contemporary appliances.

Ideally positioned, the property is just moments from Marylebone High Street and within easy reach of Baker Street station. The surrounding area offers a wide selection of boutique shops, cafés and restaurants.

- Two Bedrooms
- One Reception Room
- One Bathroom
- Pet Friendly
- Balcony

**£5,416.67 pcm**

Additional tenant charges apply (fees apply to non-AST tenancies only)

Tenancy Agreement Fee: £300

References per Tenant/Guarantor: £60

Inventory check (approx. £100 – £250 inc. VAT)

[chestertons.co.uk/property-to-rent/applicable-fees](https://www.chestertons.co.uk/property-to-rent/applicable-fees)

**Minimum Term:** 12 months  
**Deposit Required:** Five weeks  
**Local Authority:** Westminster  
**Council Tax Band:** TBC  
**EPC Rating:** TBC  
**Furnished, Part Furnished, Unfurnished**

*Chestertons Marylebone Lettings*

20a Paddington Street

London

W1U 5QP

[chestertons.co.uk](https://www.chestertons.co.uk)



This paper is  
100% recyclable