



LANG TOWN
& COUNTRY

26 Conqueror Drive, Manadon Park, Plymouth, Devon, PL5 3UT

LANG TOWN
& COUNTRY
SALES

Offers Over £575,000

Lang Town and Country are delighted to offer this spacious, modern three-storey, five-bedroom detached house located in the sought-after Manadon Park development, built by Westbury Homes in 2002. This fabulous home is set in a convenient, secluded part of Plymouth, just a short walk from all amenities.

The spacious accommodation includes a generous living room with a gas fireplace, a separate dining room/playroom, and a large open-plan kitchen offering lovely garden views. The ground floor also features a cloakroom and a utility room.

On the first floor, the master bedroom boasts an en-suite dressing room and a contemporary en-suite shower room. Additionally, there are two more bedrooms on this floor, both with fitted wardrobes, and a family bathroom.

The upper floor presents a large landing area leading to two further bedrooms, which share a Jack and Jill en-suite shower room. The property is complemented by well-maintained lawned gardens and a charming patio area, perfect for outdoor entertaining.

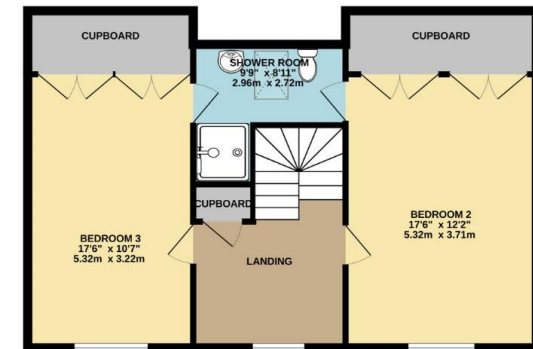
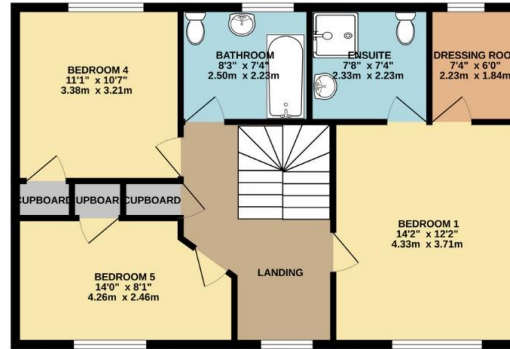
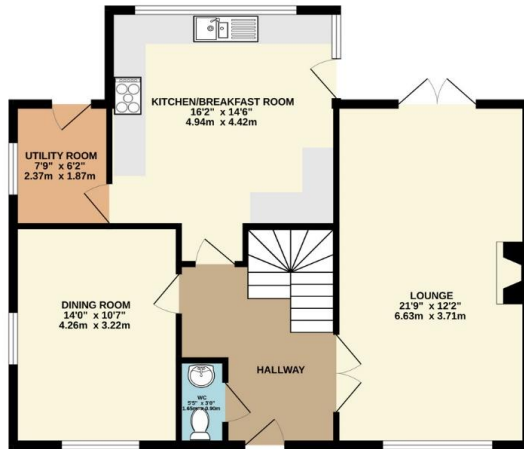
This great family home has the benefit of gas central heating, double glazing, a double garage, and a driveway.

We would recommend an early viewing to appreciate this spacious family home in a great location.



To view this property call Lang Town & Country Estate Agents on **01752 256000**.





TOTAL FLOOR AREA : 2175 sq.ft. (202.1 sq.m.) approx.

Whilst every attempt has been made to ensure the accuracy of the floorplan contained here, measurements of doors, windows, rooms and any other items are approximate and no responsibility is taken for any error, omission or mis-statement. This plan is for illustrative purposes only and should be used as such by any prospective purchaser. The services, systems and appliances shown have not been tested and no guarantee as to their operability or efficiency can be given.
Made with Metropix ©2024



Lang Town & Country
6 Mannamead Road
Plymouth
PL4 7AA

Tel: 01752 456000

Email: property@langtownandcountry.com

www.langtownandcountry.com

Lang Town & Country endeavour to ensure the accuracy of property details produced and displayed, we have not tested any apparatus, equipment, fixtures, fittings or services and so cannot verify that they are connected, in working order or fit for purpose. A buyer must check the availability of any property and make an appointment to view before embarking on any journey to see a property.

