



ST. PANCRAS WAY, NW1

£375,000

One Double Bedroom
Private Terrace
Family Bathroom
Open Plan Living Room
Communal Roof Terrace
Good Condition

@marshandparsons
marshandparsons.co.uk

MARSH &
PARSONS



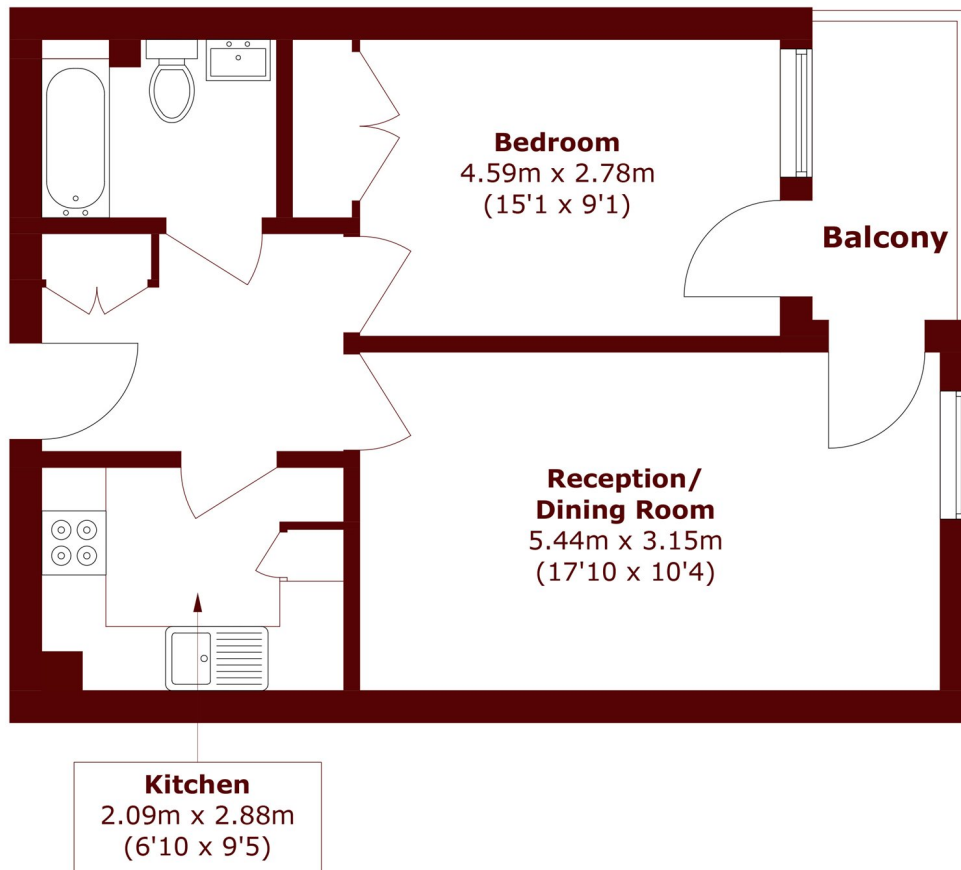
ABOUT THE PROPERTY

A purpose built, modern one bedroom apartment that comes complete with an open plan living room with fitted kitchen and appliances, a bedroom complete with fitted wardrobes, family bathroom, private terrace as well as a shared rooftop terrace overlooking the canal.

Somerston House is within walking distance of Camden Town, which offers a wide selection of retail outlets, restaurants, bars, and the vibrant Camden Market. Nearby Overground and Underground stations provide frequent services to King's Cross, Central London, and beyond.



STEP INSIDE ST. PANCRAS WAY



Total area (approx.): 46.9 sq. m (504.8 sq. ft)
Balcony area (approx.): 3.9 sq. m (42.0 sq. ft)

Camden
020 7244 2200

Energy Rating: C We aim to make our particulars both accurate and reliable. However, they are not guaranteed; nor do they form part of an offer or contract. If you require clarification on any points then please contact us, especially if you're traveling some distance to view. Please note that appliances and heating systems have not been tested and therefore no warranties can be given as to their good working order

MARSH &
PARSONS