



## Henderson Drive London, NW8

**£3,850 Per month**

**\*\* SPACIOUS THREE DOUBLE BEDROOM FLAT TO RENT \*\*** HOT WATER/HEATING AND WIFI INCLUDED IN RENT **\*\* IDEAL FOR 3 SHARERS \*\*** A spacious and well-presented three double bedroom flat set within a purpose-built development in a highly convenient location close to excellent transport links and local amenities.

Located on the second floor, the property comprises three generously sized double bedrooms, a modern kitchen diner designed as the main social and dining space, a bathroom, a separate WC, and an additional communal room ideal as a study, work-from-home space, reading room, or flexible shared area.

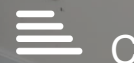
Ideally positioned close to St John's Wood (Jubilee Line), Edgware Road (Bakerloo, Circle, District, Hammersmith & City lines), and Marylebone Station (Bakerloo and National Rail).

Available from early August  
Furnished  
Deposit Required: 5 Weeks  
Council Tax Band: E (Westminster City Council)

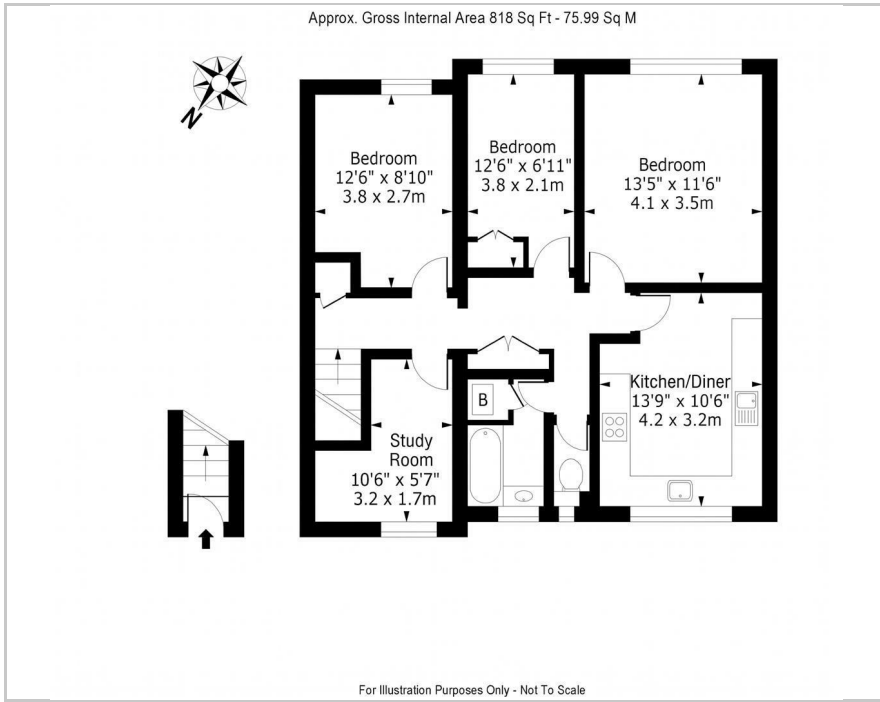
- Three Double Bedrooms
- Modern Kitchen/Diner
- Additional Study Room
- Available From Early August
- Ideal for Sharers
- Heating And Hot Water Bills Included
- Wifi Bills Included

### Viewing

Please contact our Intra Capital Estates Office on 0207 183 6676 if you wish to arrange a viewing appointment for this property or require further information.



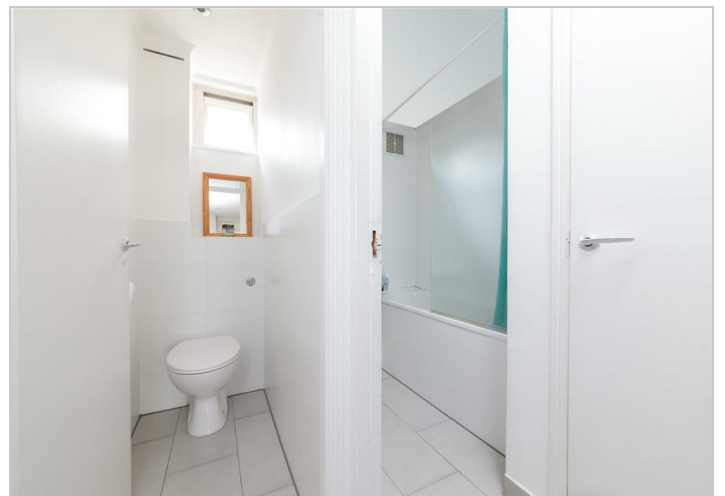
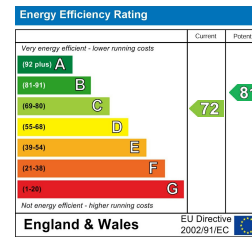
## Floor Plan



## Area Map



## Energy Efficiency Graph



These particulars, whilst believed to be accurate are set out as a general outline only for guidance and do not constitute any part of an offer or contract. Intending purchasers should not rely on them as statements of representation of fact, but must satisfy themselves by inspection or otherwise as to their accuracy. No person in this firm's employment has the authority to make or give any representation or warranty in respect of the property.

## INTRA-CAPITAL ESTATES

Paddington Works, 8 Hermitage Street, London, W2 1BE

Tel: 0207 183 6676 Email: info@intra-capital.co.uk

www.intra-capital.co.uk

Intra-Capital Estates is a trading name of Intra Capital Estates Limited, a private limited company registered in England and Wales. Registered number: 11840427. VAT registration number: 31763281. Registered office Paddington Works, 8 Hermitage Street, London, W2 1BE.

## MODERN APPROACH TRADITIONAL VALUES

