



HEARTWOOD
HOMES

Latium Close, Holywell Hill, St. Albans, AL1 1XU

£350,000

2 2 1



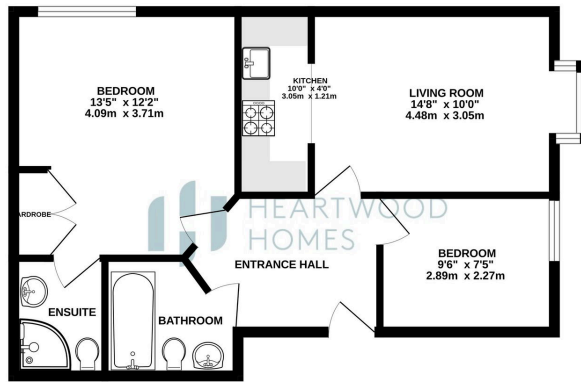
This lovely apartment is tucked away in a peaceful cul-de-sac, right opposite Verulamium Park and Westminster Lodge Sports Centre. Plus, St Albans' lively City Centre is just a short stroll away, offering a great mix of shops, dining, and leisure options, along with excellent transport links into London.

With no chain, the apartment is bright and spacious throughout. It features a welcoming entrance hall leading to all main rooms, including a family bathroom. The large, box-bay fronted living room flows nicely into the fitted kitchen, and there are two generous bedrooms, with the main bedroom benefiting from an ensuite.

Outside, the property enjoys well-maintained communal grounds and parking for residents. Give us a call today to arrange your viewing!



GROUND FLOOR
548 sq.ft. (50.9 sq.m.) approx.



TOTAL FLOOR AREA: 548 sq.ft. (50.9 sq.m.) approx.
While every effort has been made to ensure the accuracy of the description contained herein, measurements of floor, window, room and any other items are approximate and no responsibility is taken for any error, omission or misstatement. This plan for guidance purposes only and should be used as a guide to the prospective purchaser. The services, fixtures and appliances shown here are for information only and are not guaranteed. Please refer to the contract documents for full details.



- Peaceful cul-de-sac location opposite Verulamium Park and Westminster Lodge
- Sports Centre
- Excellent transport links into central London
- Large, box-bay fronted living room flowing into a fitted kitchen
- Allocated parking
- Just a short walk to St Albans' vibrant City Centre, full of shopping and dining
- Chain-free apartment with bright and spacious interiors
- Two generous bedrooms, with an ensuite to the main bedroom
- EPC Grade D

