



## The Residence, Paddington Green, W2

£800,000

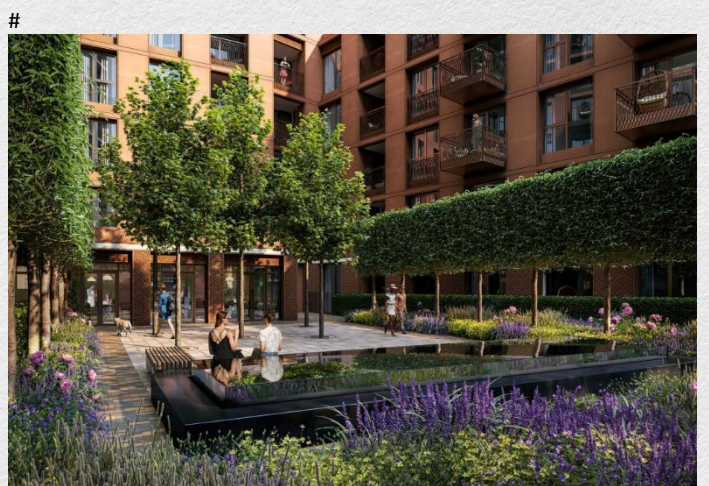
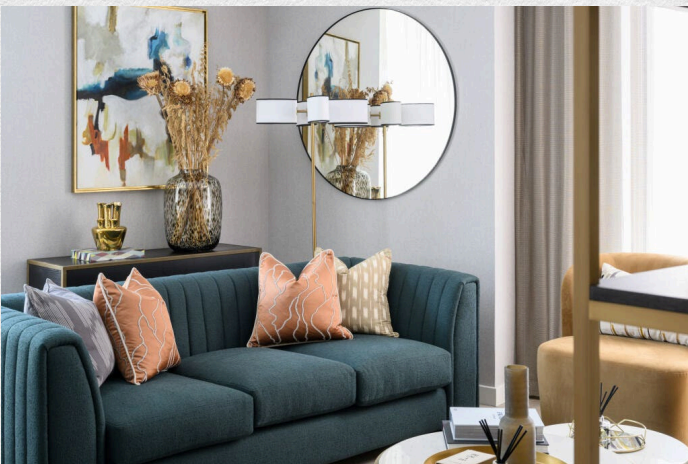
- Fourth floor apartment
- One bedroom
- One bathroom
- 610 sq ft (internal)
- Bright open-plan living and dining area
- exclusive resident amenities
- 24-hour concierge
- Close to Imperial Wharf Overground Station
- Prime Central London location

*An exceptional opportunity to secure a luxury one-bedroom apartment within The Residences, one of Central London's most anticipated new developments.*

*Situated on the 4th floor and extending to approximately 610 sq. ft., this thoughtfully designed apartment offers generous proportions and an excellent sense of space. The open-plan living area is enhanced by floor-to-ceiling windows, allowing for abundant natural light and a bright, contemporary feel.*

*The layout provides a well-sized double bedroom, separate from the main living area, alongside a sleek, modern bathroom. The apartment is finished to an excellent standard, featuring high-quality materials and refined, contemporary design throughout..*

*Ideally located in the heart of London at Paddington Green, The Residences offers outstanding connectivity to key transport links, major business districts, and the West End. Residents are moments from world-class shopping, dining, and cultural attractions.*





ONE LONDON

PROPERTY

*The Residences on  
Paddington Green, W2*

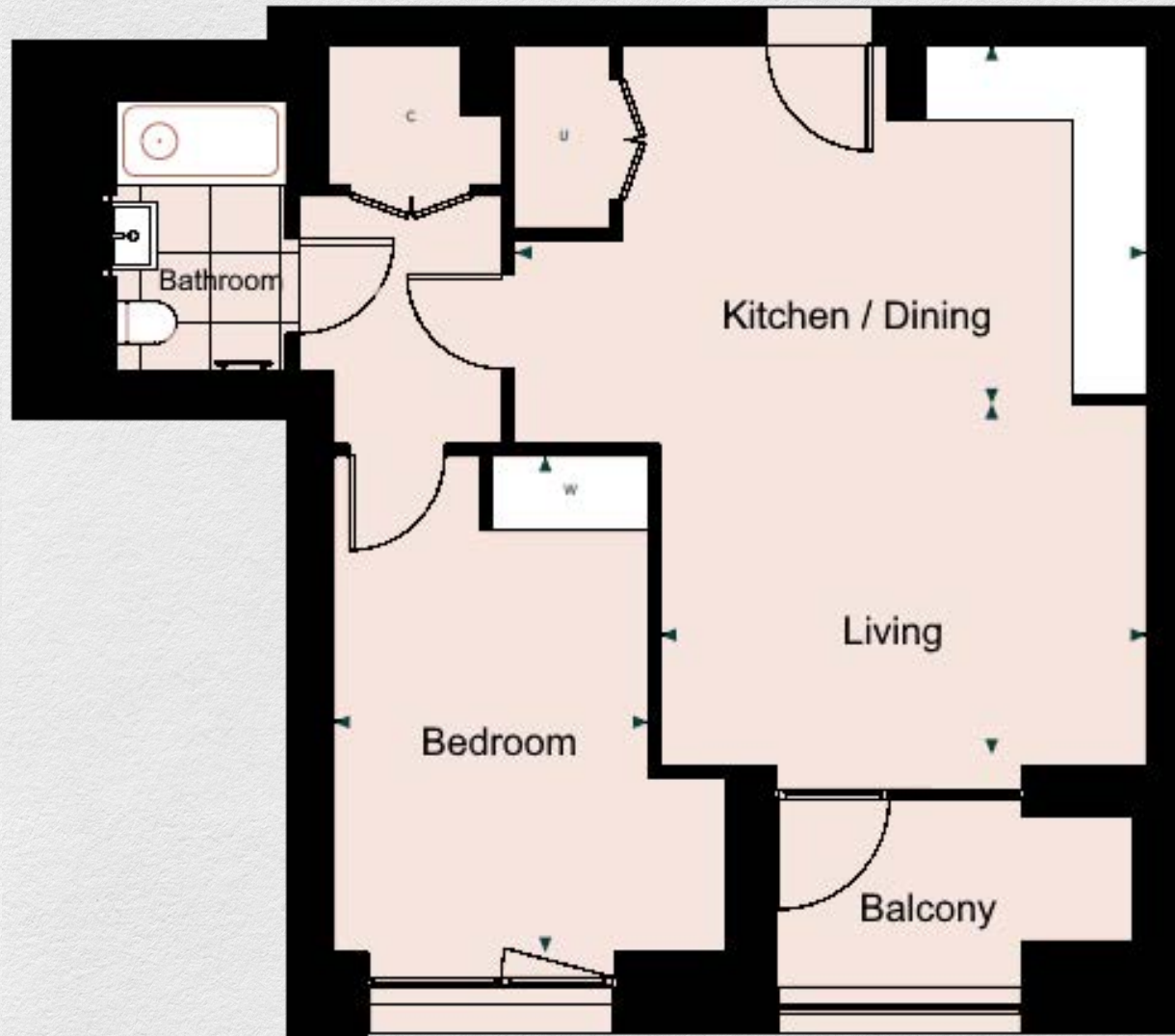
SIZE

*610 sq ft*

*One bedroom | One bathroom*

CONTACT

0207 856 0396  
info@one-london.uk  
www.one-london.uk



*\*\* For illustration purposes only. Could not be to scale.  
One-London aims to ensure accuracy but is not liable  
for any discrepancies.*

RT10