



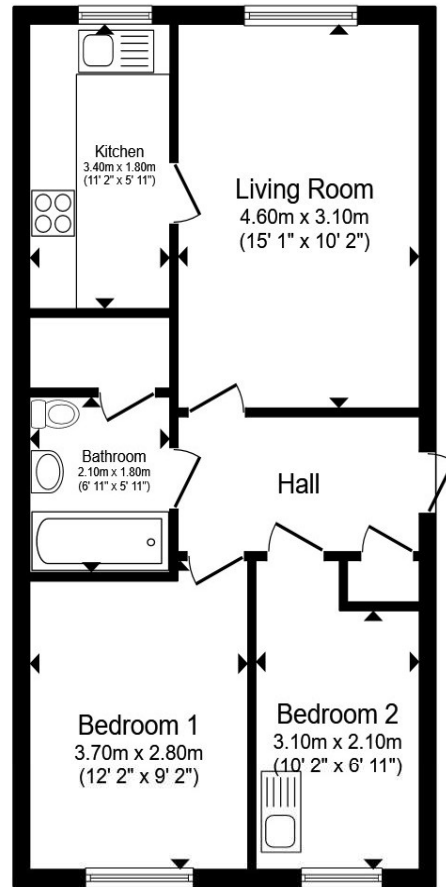
**Osprey House Briardale, WARE SG12 0XF**

**welcome to**

**Osprey House Briardale, WARE**

Situated in this private residential street, Osprey House is a ground floor, two bedroom apartment, further benefitting from resident parking, long lease and has spacious room sizing throughout. Must be viewed internally to be fully appreciated.





**Floor Plan**

Total floor area 50.6 m<sup>2</sup> (544 sq.ft.) approx

This floor plan is for illustrative purposes only. It is not drawn to scale. Any measurements, floor areas (including any total floor area), openings and orientation are approximate. No details are guaranteed, they cannot be relied upon for any purpose and they do not form part of any agreement. No liability is taken for any error, omission or misstatement. A party must rely upon its own inspection(s). Powered by [www.propertybox.io](http://www.propertybox.io)



**Entrance**

**Hall**

**Lounge**

**Kitchen**

11' 2" max x 5' 11" max ( 3.40m max x 1.80m max )

**Bedroom 1**

12' 2" max x 9' 2" max ( 3.71m max x 2.79m max )

**Bedroom 2**

10' 2" max x 6' 11" max ( 3.10m max x 2.11m max )

**Bathroom**

6' 11" max x 5' 11" max ( 2.11m max x 1.80m max )

**Parking**

**Living Room**

15' 1" max x 10' 2" max ( 4.60m max x 3.10m max )

welcome to

## Osprey House Briardale, WARE

- GROUND FLOOR
- TWO BEDROOMS
- LONG LEASE
- RESIDENT PARKING
- 

Tenure: Leasehold EPC Rating: Awaiting

Council Tax Band: C Service Charge: Ask Agent

Ground Rent: Ask Agent

This is a Leasehold property. We are awaiting further details about the Term of the lease. For further information please contact the branch. Please note additional fees could be incurred for items such as Leasehold packs.

# £250,000



Please note the marker reflects the postcode not the actual property

**view this property online** [williamhbrown.co.uk/Property/WRE107858](https://www.williamhbrown.co.uk/Property/WRE107858)



Property Ref:  
WRE107858 - 0004

1. MONEY LAUNDERING REGULATIONS Intending purchasers will be asked to produce identification documentation at a later stage and we would ask for your co-operation in order that there is no delay in agreeing the sale. 2. These particulars do not constitute part or all of an offer or contract. 3. The measurements indicated are supplied for guidance only and as such must be considered incorrect. Potential buyers are advised to recheck measurements before committing to any expense. 4. We have not tested any apparatus, equipment, fixtures or services and it is in the buyers interest to check the working condition of any appliances. 5. Where an EPC, or a Home Report (Scotland only) is held for this property, it is available for inspection at the branch by appointment. If you require a printed version of a Home Report, you will need to pay a reasonable production charge reflecting printing and other costs. 6. We are not able to offer an opinion either written or verbal on the content of these reports and this must be obtained from your legal representative. 7. Whilst we take care in preparing these reports, a buyer should ensure that his/her legal representative confirms as soon as possible all matters relating to title including the extent and boundaries of the property and other important matters before exchange of contracts.



william h brown



**01920 465411**



Ware@williamhbrown.co.uk



80 High Street, WARE, Hertfordshire, SG12 9AT



**williamhbrown.co.uk**



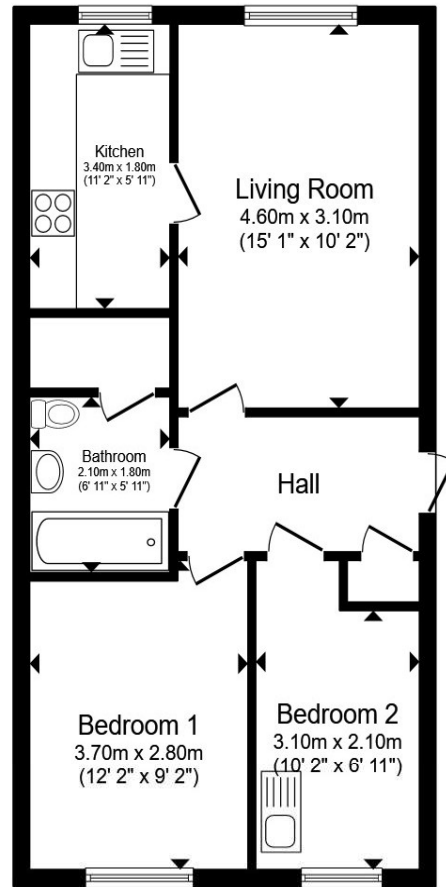
**Osprey House Briardale, WARE SG12 0XF**

**welcome to**

**Osprey House Briardale, WARE**

Situated in this private residential street, Osprey House is a ground floor, two bedroom apartment, further benefitting from resident parking, long lease and has spacious room sizing throughout. Must be viewed internally to be fully appreciated.





**Floor Plan**

Total floor area 50.6 m<sup>2</sup> (544 sq.ft.) approx

This floor plan is for illustrative purposes only. It is not drawn to scale. Any measurements, floor areas (including any total floor area), openings and orientation are approximate. No details are guaranteed, they cannot be relied upon for any purpose and they do not form part of any agreement. No liability is taken for any error, omission or misstatement. A party must rely upon its own inspection(s). Powered by [www.propertybox.io](http://www.propertybox.io)



**Entrance**

**Hall**

**Lounge**

**Kitchen**

11' 2" max x 5' 11" max ( 3.40m max x 1.80m max )

**Bedroom 1**

12' 2" max x 9' 2" max ( 3.71m max x 2.79m max )

**Bedroom 2**

10' 2" max x 6' 11" max ( 3.10m max x 2.11m max )

**Bathroom**

6' 11" max x 5' 11" max ( 2.11m max x 1.80m max )

**Parking**

**Living Room**

15' 1" max x 10' 2" max ( 4.60m max x 3.10m max )

welcome to

## Osprey House Briardale, WARE

- GROUND FLOOR
- TWO BEDROOMS
- LONG LEASE
- RESIDENT PARKING
- 

Tenure: Leasehold EPC Rating: Awaiting

Council Tax Band: C Service Charge: Ask Agent

Ground Rent: Ask Agent

This is a Leasehold property. We are awaiting further details about the Term of the lease. For further information please contact the branch. Please note additional fees could be incurred for items such as Leasehold packs.

# £250,000



Please note the marker reflects the postcode not the actual property

[view this property online williamhbrown.co.uk/Property/WRE107858](https://www.williamhbrown.co.uk/Property/WRE107858)



Property Ref:  
WRE107858 - 0004

1. MONEY LAUNDERING REGULATIONS Intending purchasers will be asked to produce identification documentation at a later stage and we would ask for your co-operation in order that there is no delay in agreeing the sale. 2. These particulars do not constitute part or all of an offer or contract. 3. The measurements indicated are supplied for guidance only and as such must be considered incorrect. Potential buyers are advised to recheck measurements before committing to any expense. 4. We have not tested any apparatus, equipment, fixtures or services and it is in the buyers interest to check the working condition of any appliances. 5. Where an EPC, or a Home Report (Scotland only) is held for this property, it is available for inspection at the branch by appointment. If you require a printed version of a Home Report, you will need to pay a reasonable production charge reflecting printing and other costs. 6. We are not able to offer an opinion either written or verbal on the content of these reports and this must be obtained from your legal representative. 7. Whilst we take care in preparing these reports, a buyer should ensure that his/her legal representative confirms as soon as possible all matters relating to title including the extent and boundaries of the property and other important matters before exchange of contracts.

William H Brown is a trading name of Sequence (UK) Limited which is registered in England and Wales under company number 4268443. Registered Office is Cumbria House, 16-20 Hockliffe Street, Leighton Buzzard, Bedfordshire, LU7 1GN. VAT Registration Number is 500 2481 05.



william h brown



01920 465411



Ware@williamhbrown.co.uk



80 High Street, WARE, Hertfordshire, SG12 9AT



[williamhbrown.co.uk](https://www.williamhbrown.co.uk)



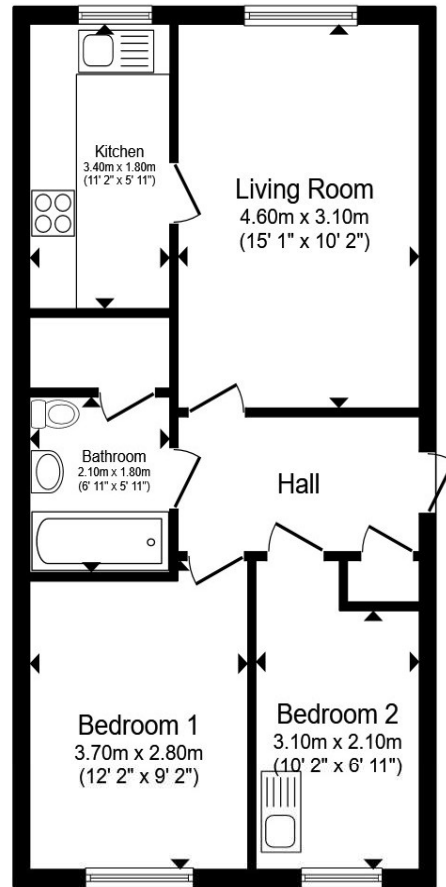
**Osprey House Briardale, WARE SG12 0XF**

**welcome to**

**Osprey House Briardale, WARE**

Situated in this private residential street, Osprey House is a ground floor, two bedroom apartment, further benefitting from resident parking, long lease and has spacious room sizing throughout. Must be viewed internally to be fully appreciated.





**Floor Plan**

Total floor area 50.6 m<sup>2</sup> (544 sq.ft.) approx

This floor plan is for illustrative purposes only. It is not drawn to scale. Any measurements, floor areas (including any total floor area), openings and orientation are approximate. No details are guaranteed, they cannot be relied upon for any purpose and they do not form part of any agreement. No liability is taken for any error, omission or misstatement. A party must rely upon its own inspection(s). Powered by [www.propertybox.io](http://www.propertybox.io)



**Entrance**

**Hall**

**Lounge**

**Kitchen**

11' 2" max x 5' 11" max ( 3.40m max x 1.80m max )

**Bedroom 1**

12' 2" max x 9' 2" max ( 3.71m max x 2.79m max )

**Bedroom 2**

10' 2" max x 6' 11" max ( 3.10m max x 2.11m max )

**Bathroom**

6' 11" max x 5' 11" max ( 2.11m max x 1.80m max )

**Parking**

**Living Room**

15' 1" max x 10' 2" max ( 4.60m max x 3.10m max )

welcome to

## Osprey House Briardale, WARE

- GROUND FLOOR
- TWO BEDROOMS
- LONG LEASE
- RESIDENT PARKING
- 

Tenure: Leasehold EPC Rating: Awaiting

Council Tax Band: C Service Charge: Ask Agent

Ground Rent: Ask Agent

This is a Leasehold property. We are awaiting further details about the Term of the lease. For further information please contact the branch. Please note additional fees could be incurred for items such as Leasehold packs.

# £250,000



Please note the marker reflects the postcode not the actual property

**view this property online** [williamhbrown.co.uk/Property/WRE107858](https://www.williamhbrown.co.uk/Property/WRE107858)



Property Ref:  
WRE107858 - 0004

1. MONEY LAUNDERING REGULATIONS Intending purchasers will be asked to produce identification documentation at a later stage and we would ask for your co-operation in order that there is no delay in agreeing the sale. 2. These particulars do not constitute part or all of an offer or contract. 3. The measurements indicated are supplied for guidance only and as such must be considered incorrect. Potential buyers are advised to recheck measurements before committing to any expense. 4. We have not tested any apparatus, equipment, fixtures or services and it is in the buyers interest to check the working condition of any appliances. 5. Where an EPC, or a Home Report (Scotland only) is held for this property, it is available for inspection at the branch by appointment. If you require a printed version of a Home Report, you will need to pay a reasonable production charge reflecting printing and other costs. 6. We are not able to offer an opinion either written or verbal on the content of these reports and this must be obtained from your legal representative. 7. Whilst we take care in preparing these reports, a buyer should ensure that his/her legal representative confirms as soon as possible all matters relating to title including the extent and boundaries of the property and other important matters before exchange of contracts.



william h brown



**01920 465411**



Ware@williamhbrown.co.uk



80 High Street, WARE, Hertfordshire, SG12 9AT



**williamhbrown.co.uk**



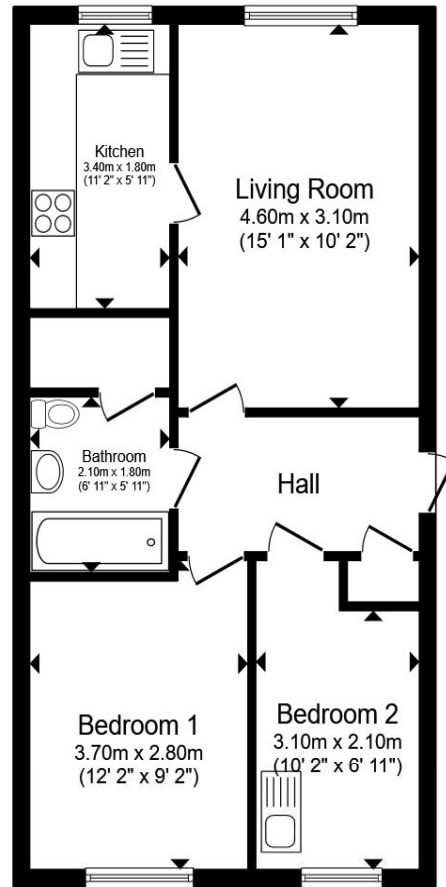
**Osprey House Briardale, WARE SG12 0XF**

**welcome to**

**Osprey House Briardale, WARE**

Situated in this private residential street, Osprey House is a ground floor, two bedroom apartment, further benefitting from resident parking, long lease and has spacious room sizing throughout. Must be viewed internally to be fully appreciated.





**Floor Plan**

**Entrance**

**Hall**

**Lounge**

**Kitchen**

11' 2" max x 5' 11" max ( 3.40m max x 1.80m max )

**Bedroom 1**

12' 2" max x 9' 2" max ( 3.71m max x 2.79m max )

**Bedroom 2**

10' 2" max x 6' 11" max ( 3.10m max x 2.11m max )

**Bathroom**

6' 11" max x 5' 11" max ( 2.11m max x 1.80m max )

**Parking**

**Living Room**

15' 1" max x 10' 2" max ( 4.60m max x 3.10m max )

Total floor area 50.6 m<sup>2</sup> (544 sq.ft.) approx

This floor plan is for illustrative purposes only. It is not drawn to scale. Any measurements, floor areas (including any total floor area), openings and orientation are approximate. No details are guaranteed, they cannot be relied upon for any purpose and they do not form part of any agreement. No liability is taken for any error, omission or misstatement. A party must rely upon its own inspection(s). Powered by [www.propertybox.io](http://www.propertybox.io)



welcome to

## Osprey House Briardale, WARE

- GROUND FLOOR
- TWO BEDROOMS
- LONG LEASE
- RESIDENT PARKING
- 

Tenure: Leasehold EPC Rating: Awaiting

Council Tax Band: C Service Charge: Ask Agent

Ground Rent: Ask Agent

This is a Leasehold property. We are awaiting further details about the Term of the lease. For further information please contact the branch. Please note additional fees could be incurred for items such as Leasehold packs.

# £250,000



Please note the marker reflects the postcode not the actual property

**view this property online** [williamhbrown.co.uk/Property/WRE107858](https://www.williamhbrown.co.uk/Property/WRE107858)



Property Ref:  
WRE107858 - 0004

1. MONEY LAUNDERING REGULATIONS Intending purchasers will be asked to produce identification documentation at a later stage and we would ask for your co-operation in order that there is no delay in agreeing the sale. 2. These particulars do not constitute part or all of an offer or contract. 3. The measurements indicated are supplied for guidance only and as such must be considered incorrect. Potential buyers are advised to recheck measurements before committing to any expense. 4. We have not tested any apparatus, equipment, fixtures or services and it is in the buyers interest to check the working condition of any appliances. 5. Where an EPC, or a Home Report (Scotland only) is held for this property, it is available for inspection at the branch by appointment. If you require a printed version of a Home Report, you will need to pay a reasonable production charge reflecting printing and other costs. 6. We are not able to offer an opinion either written or verbal on the content of these reports and this must be obtained from your legal representative. 7. Whilst we take care in preparing these reports, a buyer should ensure that his/her legal representative confirms as soon as possible all matters relating to title including the extent and boundaries of the property and other important matters before exchange of contracts.

William H Brown is a trading name of Sequence (UK) Limited which is registered in England and Wales under company number 4268443. Registered Office is Cumbria House, 16-20 Hockliffe Street, Leighton Buzzard, Bedfordshire, LU7 1GN. VAT Registration Number is 500 2481 05.



william h brown



**01920 465411**



Ware@williamhbrown.co.uk



80 High Street, WARE, Hertfordshire, SG12 9AT



**williamhbrown.co.uk**



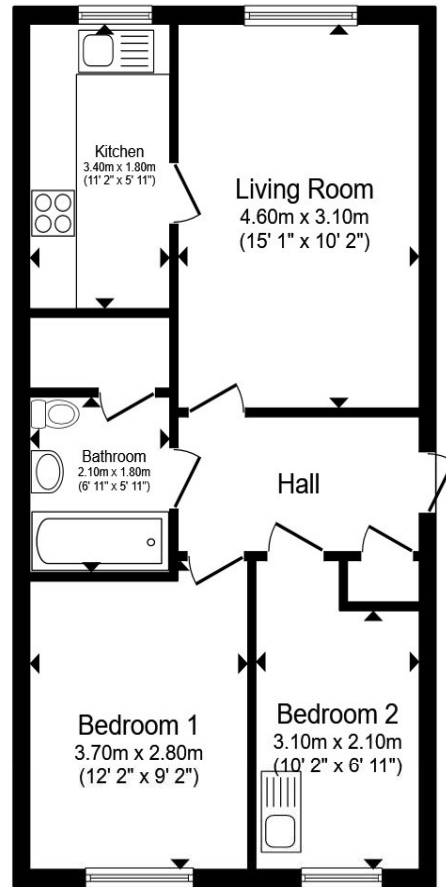
**Osprey House Briardale, WARE SG12 0XF**

**welcome to**

**Osprey House Briardale, WARE**

Situated in this private residential street, Osprey House is a ground floor, two bedroom apartment, further benefitting from resident parking, long lease and has spacious room sizing throughout. Must be viewed internally to be fully appreciated.





**Floor Plan**

Total floor area 50.6 m<sup>2</sup> (544 sq.ft.) approx

This floor plan is for illustrative purposes only. It is not drawn to scale. Any measurements, floor areas (including any total floor area), openings and orientation are approximate. No details are guaranteed, they cannot be relied upon for any purpose and they do not form part of any agreement. No liability is taken for any error, omission or misstatement. A party must rely upon its own inspection(s). Powered by [www.propertybox.io](http://www.propertybox.io)



**Entrance**

**Hall**

**Lounge**

**Kitchen**

11' 2" max x 5' 11" max ( 3.40m max x 1.80m max )

**Bedroom 1**

12' 2" max x 9' 2" max ( 3.71m max x 2.79m max )

**Bedroom 2**

10' 2" max x 6' 11" max ( 3.10m max x 2.11m max )

**Bathroom**

6' 11" max x 5' 11" max ( 2.11m max x 1.80m max )

**Parking**

**Living Room**

15' 1" max x 10' 2" max ( 4.60m max x 3.10m max )

welcome to

## Osprey House Briardale, WARE

- GROUND FLOOR
- TWO BEDROOMS
- LONG LEASE
- RESIDENT PARKING
- 

Tenure: Leasehold EPC Rating: Awaiting

Council Tax Band: C Service Charge: Ask Agent

Ground Rent: Ask Agent

This is a Leasehold property. We are awaiting further details about the Term of the lease. For further information please contact the branch. Please note additional fees could be incurred for items such as Leasehold packs.

# £250,000



Please note the marker reflects the postcode not the actual property

**view this property online** [williamhbrown.co.uk/Property/WRE107858](https://www.williamhbrown.co.uk/Property/WRE107858)



Property Ref:  
WRE107858 - 0004

1. MONEY LAUNDERING REGULATIONS Intending purchasers will be asked to produce identification documentation at a later stage and we would ask for your co-operation in order that there is no delay in agreeing the sale. 2. These particulars do not constitute part or all of an offer or contract. 3. The measurements indicated are supplied for guidance only and as such must be considered incorrect. Potential buyers are advised to recheck measurements before committing to any expense. 4. We have not tested any apparatus, equipment, fixtures or services and it is in the buyers interest to check the working condition of any appliances. 5. Where an EPC, or a Home Report (Scotland only) is held for this property, it is available for inspection at the branch by appointment. If you require a printed version of a Home Report, you will need to pay a reasonable production charge reflecting printing and other costs. 6. We are not able to offer an opinion either written or verbal on the content of these reports and this must be obtained from your legal representative. 7. Whilst we take care in preparing these reports, a buyer should ensure that his/her legal representative confirms as soon as possible all matters relating to title including the extent and boundaries of the property and other important matters before exchange of contracts.

William H Brown is a trading name of Sequence (UK) Limited which is registered in England and Wales under company number 4268443. Registered Office is Cumbria House, 16-20 Hockliffe Street, Leighton Buzzard, Bedfordshire, LU7 1GN. VAT Registration Number is 500 2481 05.



william h brown



**01920 465411**



Ware@williamhbrown.co.uk



80 High Street, WARE, Hertfordshire, SG12 9AT



**williamhbrown.co.uk**



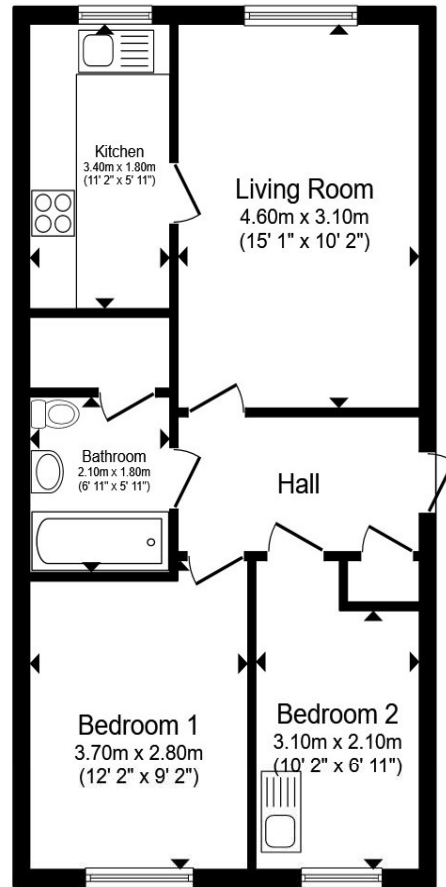
**Osprey House Briardale, WARE SG12 0XF**

**welcome to**

**Osprey House Briardale, WARE**

Situated in this private residential street, Osprey House is a ground floor, two bedroom apartment, further benefitting from resident parking, long lease and has spacious room sizing throughout. Must be viewed internally to be fully appreciated.





**Floor Plan**

Total floor area 50.6 m<sup>2</sup> (544 sq.ft.) approx

This floor plan is for illustrative purposes only. It is not drawn to scale. Any measurements, floor areas (including any total floor area), openings and orientation are approximate. No details are guaranteed, they cannot be relied upon for any purpose and they do not form part of any agreement. No liability is taken for any error, omission or misstatement. A party must rely upon its own inspection(s). Powered by [www.propertybox.io](http://www.propertybox.io)

**Entrance**

**Hall**

**Lounge**

**Kitchen**

11' 2" max x 5' 11" max ( 3.40m max x 1.80m max )

**Bedroom 1**

12' 2" max x 9' 2" max ( 3.71m max x 2.79m max )

**Bedroom 2**

10' 2" max x 6' 11" max ( 3.10m max x 2.11m max )

**Bathroom**

6' 11" max x 5' 11" max ( 2.11m max x 1.80m max )

**Parking**

**Living Room**

15' 1" max x 10' 2" max ( 4.60m max x 3.10m max )

welcome to

## Osprey House Briardale, WARE

- GROUND FLOOR
- TWO BEDROOMS
- LONG LEASE
- RESIDENT PARKING
- 

Tenure: Leasehold EPC Rating: Awaiting

Council Tax Band: C Service Charge: Ask Agent

Ground Rent: Ask Agent

This is a Leasehold property. We are awaiting further details about the Term of the lease. For further information please contact the branch. Please note additional fees could be incurred for items such as Leasehold packs.

# £250,000



Please note the marker reflects the postcode not the actual property

[view this property online williamhbrown.co.uk/Property/WRE107858](https://www.williamhbrown.co.uk/Property/WRE107858)



Property Ref:  
WRE107858 - 0004

1. MONEY LAUNDERING REGULATIONS Intending purchasers will be asked to produce identification documentation at a later stage and we would ask for your co-operation in order that there is no delay in agreeing the sale. 2. These particulars do not constitute part or all of an offer or contract. 3. The measurements indicated are supplied for guidance only and as such must be considered incorrect. Potential buyers are advised to recheck measurements before committing to any expense. 4. We have not tested any apparatus, equipment, fixtures or services and it is in the buyers interest to check the working condition of any appliances. 5. Where an EPC, or a Home Report (Scotland only) is held for this property, it is available for inspection at the branch by appointment. If you require a printed version of a Home Report, you will need to pay a reasonable production charge reflecting printing and other costs. 6. We are not able to offer an opinion either written or verbal on the content of these reports and this must be obtained from your legal representative. 7. Whilst we take care in preparing these reports, a buyer should ensure that his/her legal representative confirms as soon as possible all matters relating to title including the extent and boundaries of the property and other important matters before exchange of contracts.

William H Brown is a trading name of Sequence (UK) Limited which is registered in England and Wales under company number 4268443. Registered Office is Cumbria House, 16-20 Hockliffe Street, Leighton Buzzard, Bedfordshire, LU7 1GN. VAT Registration Number is 500 2481 05.



william h brown



01920 465411



Ware@williamhbrown.co.uk



80 High Street, WARE, Hertfordshire, SG12 9AT



[williamhbrown.co.uk](https://www.williamhbrown.co.uk)