



# Great Eastern Road, London E15

£565,000 Leasehold







## Description

This bright, spacious and ultra modern 24th floor 2 double bedroom apartment is located within Stratosphere Tower E15 where you are a 0.1 mile walk to Stratford Station. Residents further benefit access to a 24hr concierge service, private residents' roof-top gymnasium and Wi-Fi lounge.

Comprising entrance hall with ample storage, 2 double bedrooms, 2 bathrooms (en suite to master bedroom), modern and fully fitted kitchen and large living room with views towards Stratford City. The property benefits underfloor heating, handle less fitted units from designer Urban Myth, stone worktops, Smeg appliances. Kitchen, living room & hallway in quality wood strip laminate, bedrooms carpeted in a neutral colour tone. Bath with thermostatic rain shower mixer & glazed screen, contemporary ceramic tiling, large vanity mirror, bespoke cabinetry with built in storage & low voltage socket and two towel rails. Wardrobes to master bedroom with mirrored doors.

Stratosphere Tower is one of Stratford's most iconic developments which completed for occupation in 2017 and benefits from a 24 hour concierge service, 36th floor private residents' roof-top garden, gymnasium and Wi-Fi lounge.

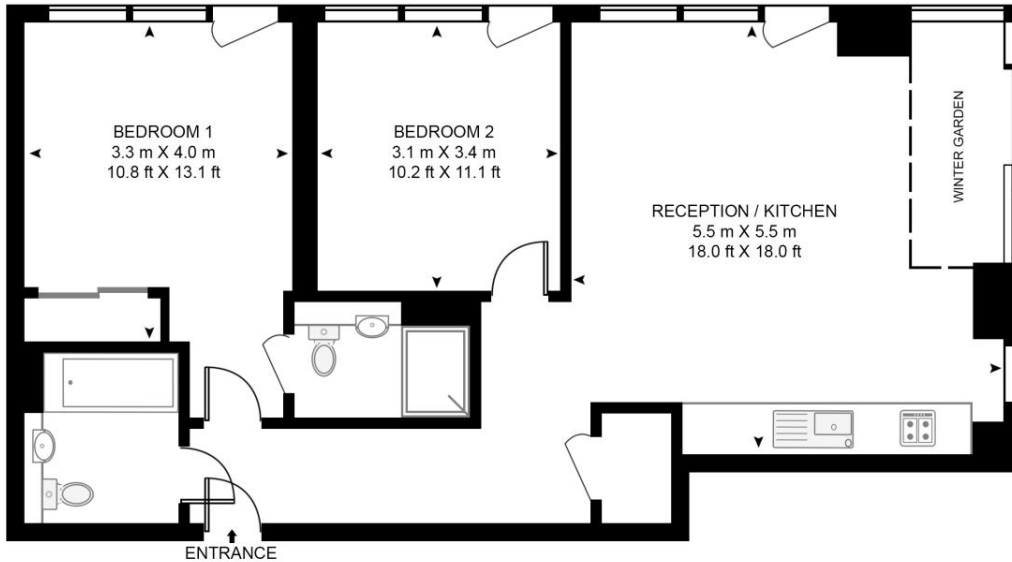
- Two bedroom apartment
- Two bathroom
- South facing view
- 24th floor (lift access)
- 24 hour concierge service
- Residents gym (36th floor)
- Residents lounge & roof terrace
- 0.1 mile from Stratford Station
- Approx. 792 sq. ft (73.6 sq. m)
- EPC: B

# Floorplan

792 sq ft | 74 sq m

## STRATOSPHERE TOWER

APPROXIMATE GROSS INTERNAL FLOOR AREA 792 SQ.FT (73.6 SQ.M)



## TWENTY FOURTH FLOOR



This floor plan has been defined by the RICS Code of Measurement. This floor plan and all others are for approximate representative purposes only and upon usage is agreed to as such by the client.  
WWW: [hdvirtualart.com](http://hdvirtualart.com) | TEL: 0203.974.1567 | EMAIL: [info@hdvirtualart.com](mailto:info@hdvirtualart.com)

Stratford  
5 Station Street,  
London E15 1DA  
+4420 3147 1500  
[Lettingsstratford@eu.jll.com](mailto:Lettingsstratford@eu.jll.com)

*Urban living, your way.*

[jll.co.uk/residential](http://jll.co.uk/residential)

© 2019 Jones Lang LaSalle IP, Inc. All rights reserved. All information contained herein is from sources deemed reliable; however, no representation or warranty is made to the accuracy thereof.

