



House - Terraced

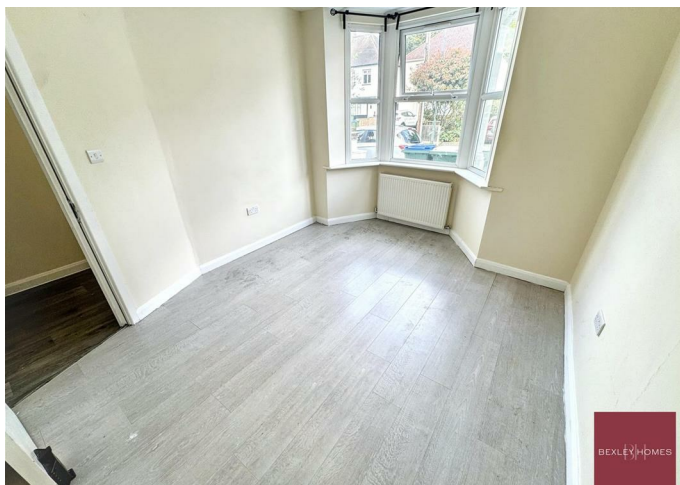
29 RIVERDALE  
ROAD, ERITH,  
DA8 1PU

Per Month

£4,000

### FEATURES

- Available for Company Let
- Arranged Over Three Floors
- Large Kitchen/Diner & Communal Living Area
- Spacious 8 Bedroom HMO
- Multiple Bathrooms
- Excellent Transport Links Including Elizabeth Line Access



BEXLEY HOMES

# 8 Bedroom House – Terraced located in Erith

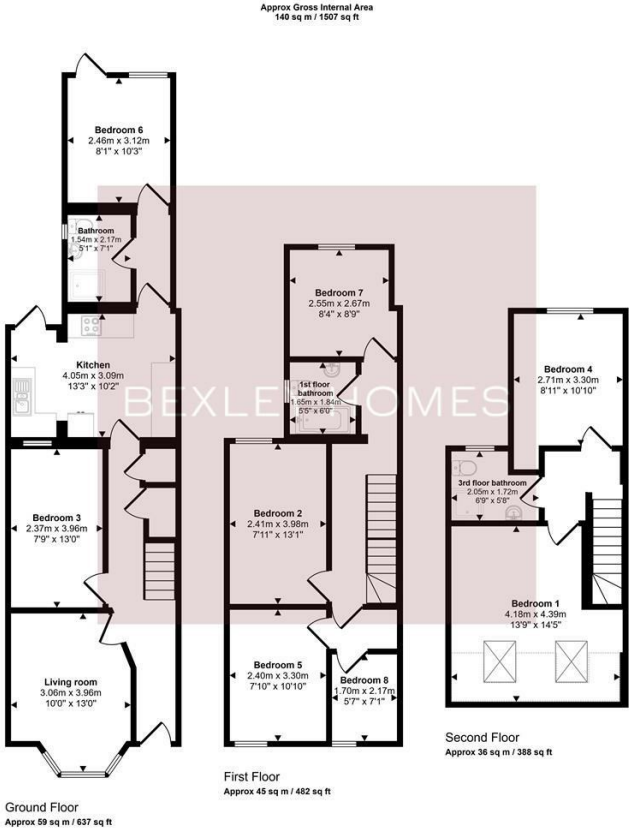
Spacious 8 Bedroom HMO Available for Company Let

A substantial and versatile 8-bedroom HMO property arranged over three floors, ideally suited for company let, supported accommodation providers, relocation companies, contractors, temporary staff housing, or assisted living operators.

Situated on a quiet residential road in Erith, this large property offers generous living accommodation with multiple bathrooms, spacious bedrooms, and excellent transport links into London and surrounding areas.

**Accommodation Overview:**

The ground floor comprises a spacious living room, a large fitted kitchen/diner, three bedrooms, and a bathroom.

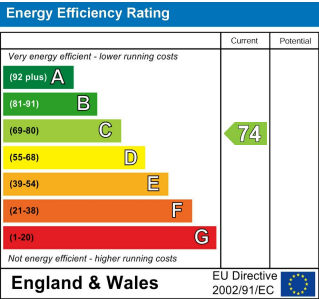


This floorplan is only for illustrative purposes and is not to scale. Measurements of rooms, doors, windows, and any items are approximate and no responsibility is taken for any error, omission or mis-statement. Icons of items such as bathroom suites are representations only and may not look like the real items. Made with Made Snappy 360.

Call us on  
01322 948500

Belvedere@bexleyhomes.co.uk  
www.bexleyhomes.co.uk

Council Tax Band  
C



Agents Note: Whilst every care has been taken to prepare these particulars, they are for guidance purposes only. All measurements are approximate and are for general guidance purposes only and whilst every care has been taken to ensure their accuracy, they should not be relied upon and potential buyers are advised to recheck the measurements.

