



Daneway House, Westridge Road, SOUTHAMPTON SO17 2AH

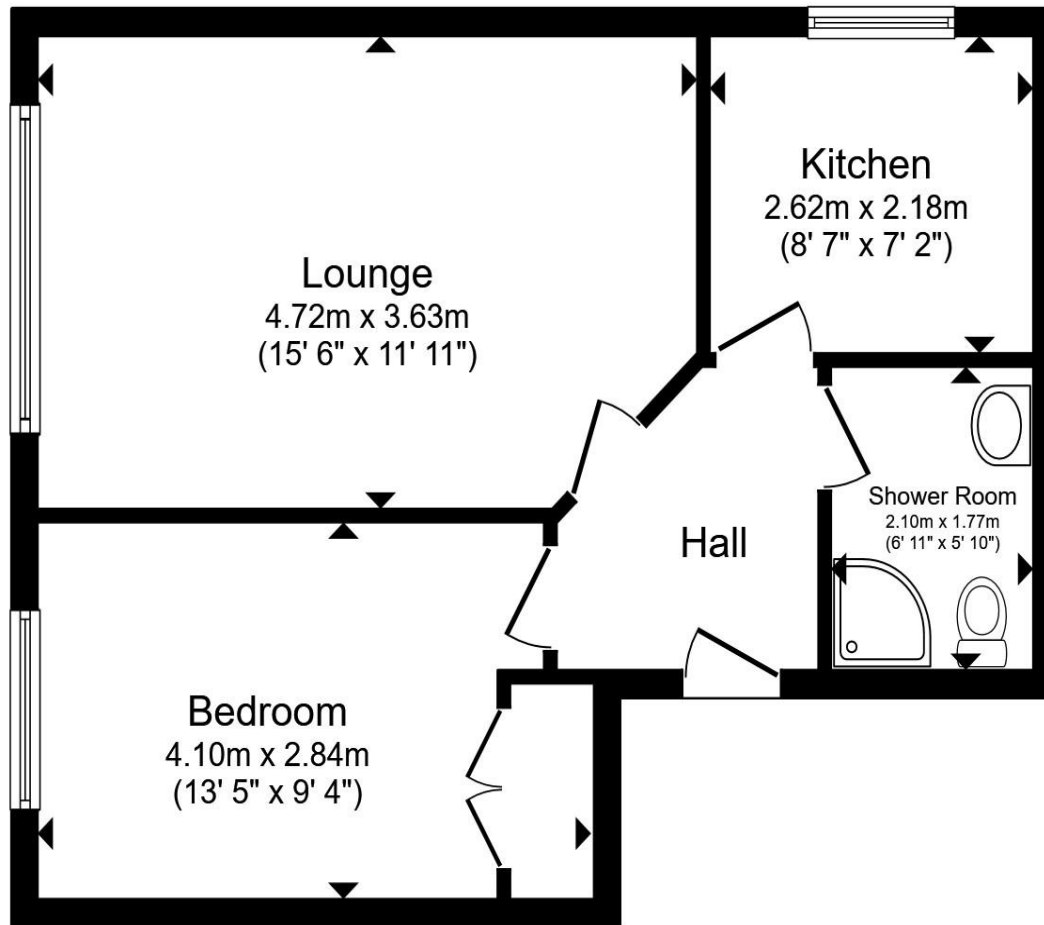
welcome to

Daneway House Westridge Road, SOUTHAMPTON

One Bedroom Apartment - Daneway House, Westridge Road, Southampton

A well-presented one-bedroom second floor apartment situated within the attractive and well-maintained Daneway House on Westridge Road, Southampton. This appealing home offers a comfortable layout and desirable features.





Entrance Hall

Lounge

15' 6" max x 11' 11" max (4.72m max x 3.63m max)

Kitchen

8' 7" x 7' 2" (2.62m x 2.18m)

Bedroom

13' 5" max x 9' 4" max (4.09m max x 2.84m max)

Shower Room

6' 11" x 5' 10" (2.11m x 1.78m)

Additional Information

Total floor area 46.3 m² (498 sq.ft.) approx

This floor plan is for illustrative purposes only. It is not drawn to scale. Any measurements, floor areas (including any total floor area), openings and orientation are approximate. No details are guaranteed, they cannot be relied upon for any purpose and they do not form part of any agreement. No liability is taken for any error, omission or misstatement. A party must rely upon its own inspection(s). Powered by www.propertybox.io



welcome to

Daneway House, Westridge Road, SOUTHAMPTON

- One Bedroom Apartment
- Double Bedroom with Built-In Wardrobes
- Communal Garden & Patio Area
- Allocated Parking Space & Four Visitor Spaces
- Cycle Storage

Tenure: Leasehold EPC Rating: C

Council Tax Band: A Service Charge: £1,500

Ground Rent: £150

This is a Leasehold property. We are awaiting further details about the Term of the lease. For further information please contact the branch. Please note additional fees could be incurred for items such as Leasehold packs.

£145,000



Please note the marker reflects the postcode not the actual property

view this property online fox-and-sons.co.uk/Property/SOU117863



Property Ref:
SOU117863 - 0002

1. MONEY LAUNDERING REGULATIONS Intending purchasers will be asked to produce identification documentation at a later stage and we would ask for your co-operation in order that there is no delay in agreeing the sale. 2. These particulars do not constitute part or all of an offer or contract. 3. The measurements indicated are supplied for guidance only and as such must be considered incorrect. Potential buyers are advised to recheck measurements before committing to any expense. 4. We have not tested any apparatus, equipment, fixtures or services and it is in the buyers interest to check the working condition of any appliances. 5. Where an EPC, or a Home Report (Scotland only) is held for this property, it is available for inspection at the branch by appointment. If you require a printed version of a Home Report, you will need to pay a reasonable production charge reflecting printing and other costs. 6. We are not able to offer an opinion either written or verbal on the content of these reports and this must be obtained from your legal representative. 7. Whilst we take care in preparing these reports, a buyer should ensure that his/her legal representative confirms as soon as possible all matters relating to title including the extent and boundaries of the property and other important matters before exchange of contracts.

fox & sons



02380 225155



Southampton@fox-and-sons.co.uk



32 - 34 London Road, SOUTHAMPTON,
Hampshire, SO15 2AG



fox-and-sons.co.uk