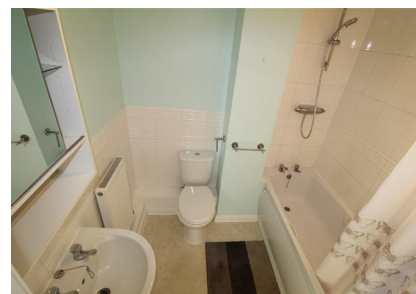


45 Peppercorn Way, Dunstable, Bedfordshire, LU6 1EL
£925 PCM

ROBINSONS



AVAILABLE A ONE BEDROOM FIRST FLOOR FLAT IN NORTH DUNSTABLE

An extremely well presented one double bedroom FIRST FLOOR apartment located in this popular development to the north side of town. Accommodation comprises: Entrance hall, entry phone system, spacious lounge opening onto the well planned kitchen, double bedroom, modern bathroom, gas central heating and PARKING

ROBINSONS

20 West Street
Dunstable
Bedfordshire
LU6 1SX
01582 661112
sales@robinsons-estates.co.uk
<https://www.robinsons-estates.co.uk>

