

6 Ingrams Way, Wigston

In Excess of £240,000

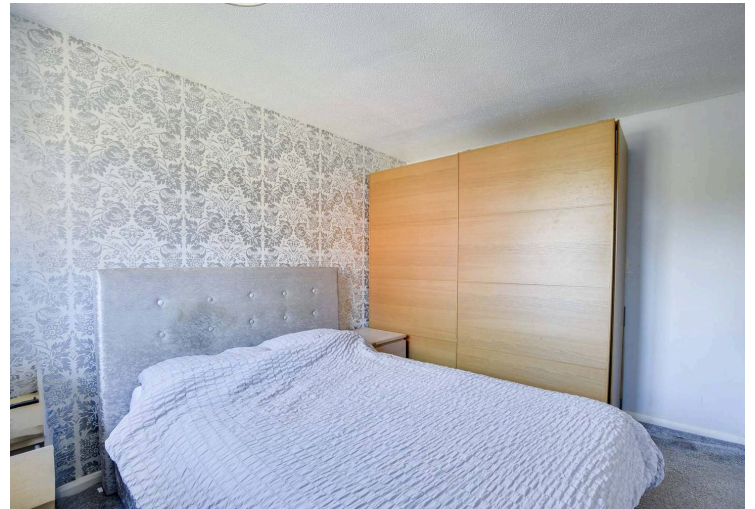
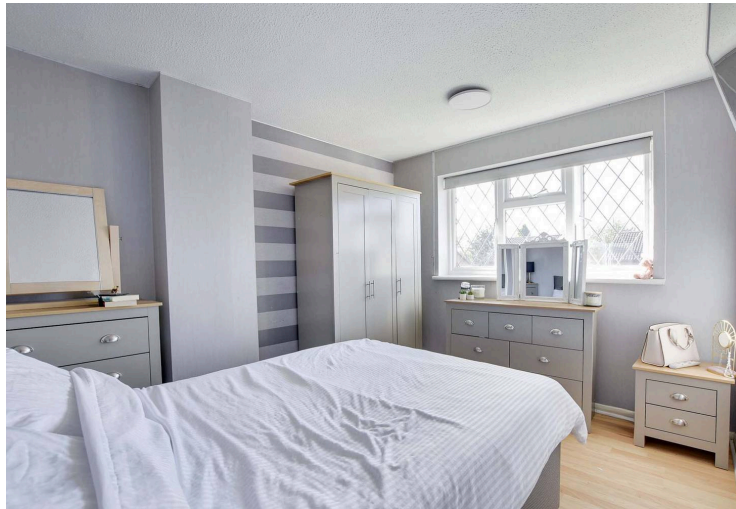
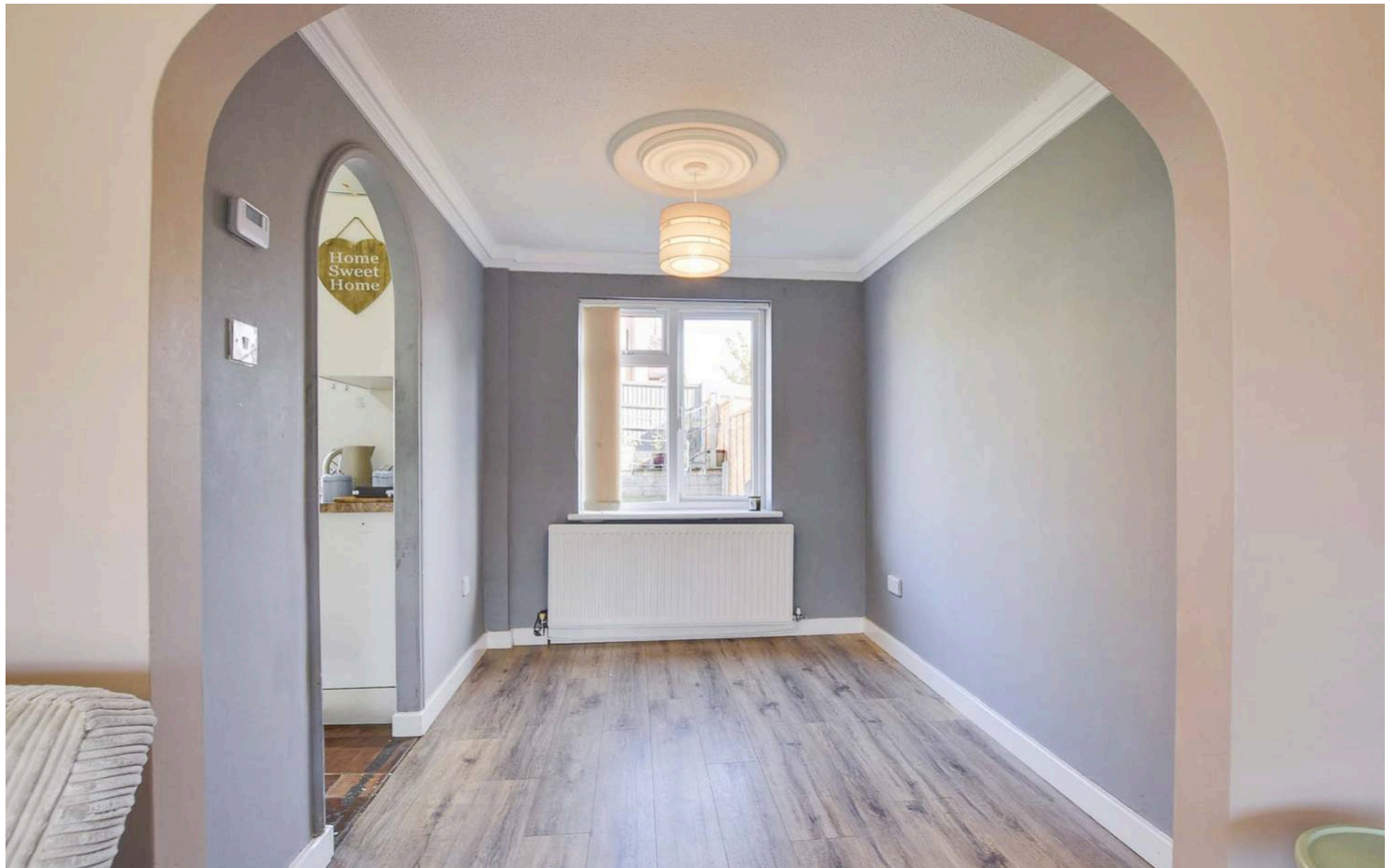
Located in the Wigston Harcourt area, this semi-detached family home offers WELL-PROPORTIONED accommodation over two floors. The property benefits from front and rear gardens.

Council Tax band: B

Tenure: Freehold

EPC Energy Efficiency Rating: C





Entrance Lobby

With wood effect laminate floor, stairs to first floor.

Lounge

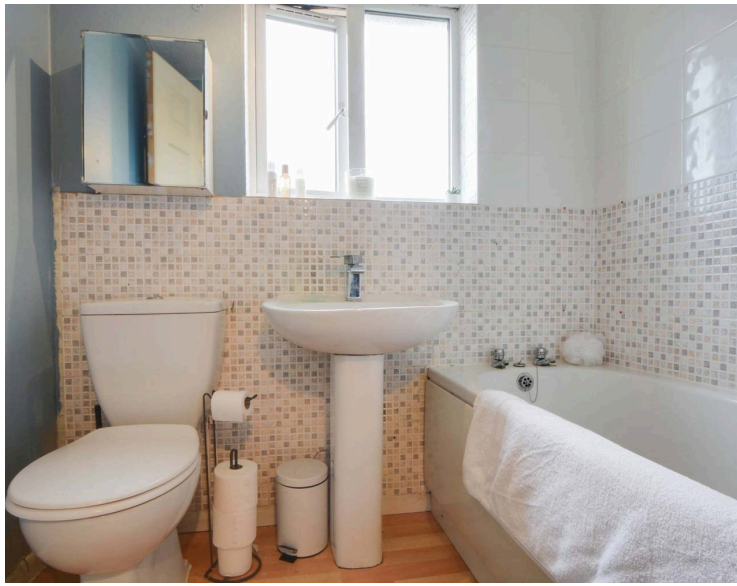
15' 11" x 13' 3" (4.85m x 4.05m)

With double glazed window to the front elevation, wood effect floor, TV point, ceiling coving, radiator, archway leading to dining room.

Dining Room

8' 8" x 7' 7" (2.64m x 2.31m)

With double glazed window to the rear elevation, ceiling coving, wood effect laminate floor, radiator, archway leading to the kitchen.



Kitchen

8' 8" x 8' 1" (2.64m x 2.46m)

With double glazed window and door to the rear elevation, tiled floor, part tiled walls, a range of wall and base units with work surface over, stainless steel sink and drainer, electric cooker point, plumbing for washing machine, plumbing for dishwasher.

First Floor Landing

With double glazed window to the side elevation.

Bedroom One

11' 5" x 9' 0" (3.48m x 2.74m)

With double glazed window to the front elevation, wood effect laminate floor, radiator.

Bedroom Two

9' 0" x 9' 0" (2.74m x 2.74m)

With double glazed window to the rear elevation, radiator.

Bedroom Three

7' 0" x 6' 11" (2.13m x 2.11m)

With double glazed window to the front elevation, radiator.

Bathroom

6' 5" x 5' 8" (1.95m x 1.72m)

With double glazed window to the rear elevation, wood effect floor, bath, low-level WC, wash hand basin, part tiled walls, radiator.

Front Garden

With lawn area, shrubs.

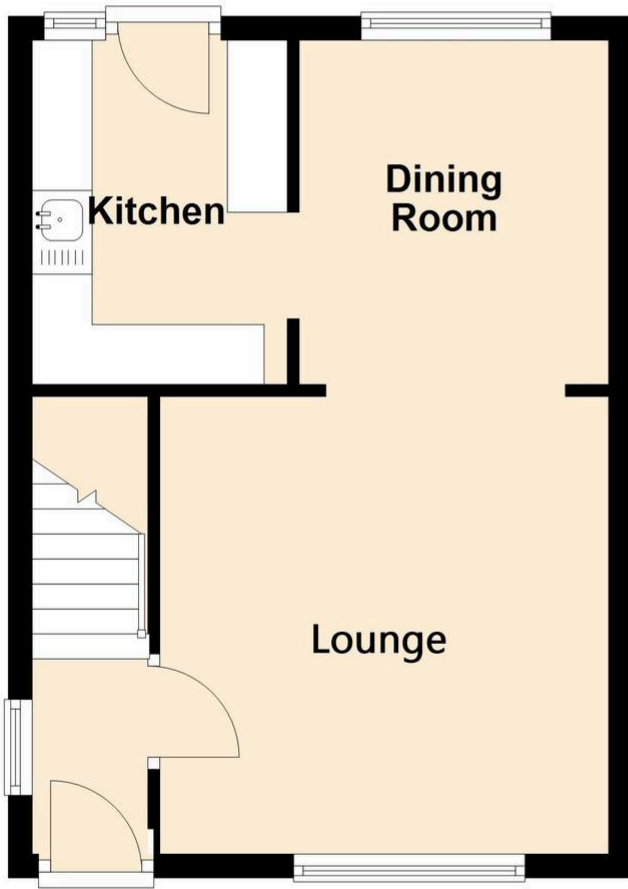
Rear Garden

With paved patio seating area, lawn, decked area to the rear, fencing to perimeter.

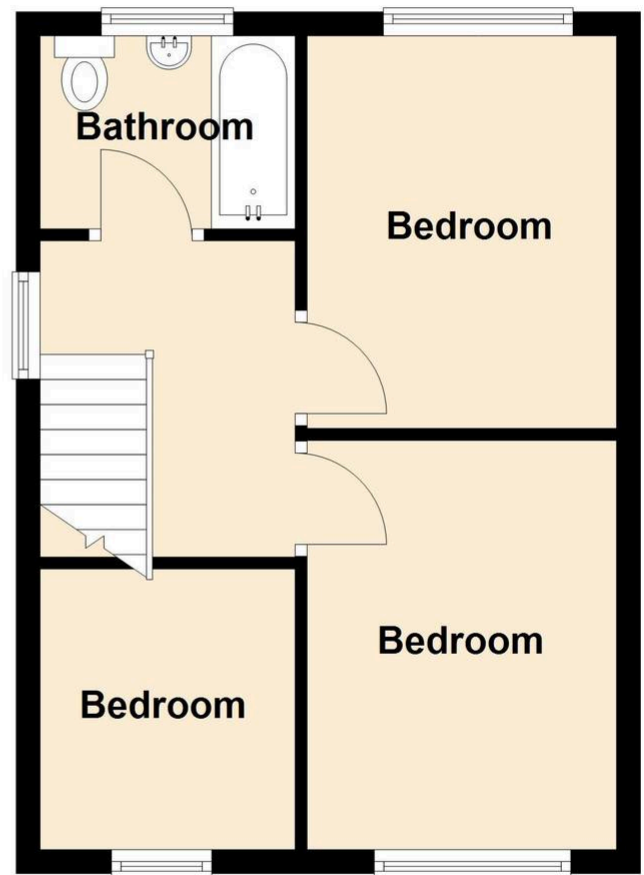
Off street

2 vehicles - Please note that parking is subject to vehicle size. Prospective purchasers should ensure the dimensions are suitable for their vehicle before relying on it for parking purposes.

Ground Floor



First Floor

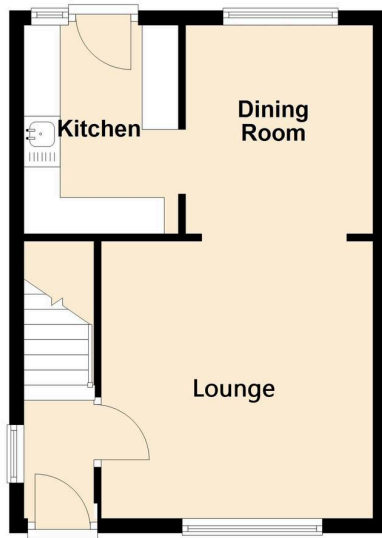


We'll keep you moving...

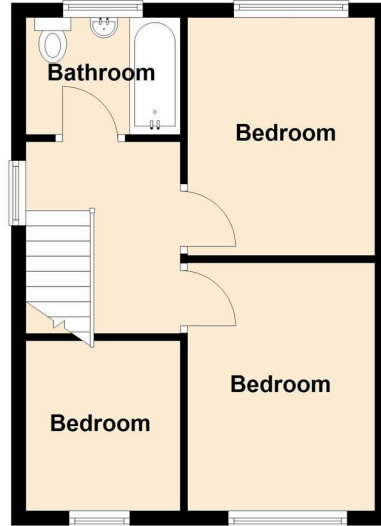


We must inform all prospective purchasers that the measurements are taken by an electronic tape and are provided as a guide only and they should not be used as accurate measurements. We have not tested any mains services, gas or electric appliances, or fixtures and fittings mentioned in these details, therefore, prospective purchasers should satisfy themselves before committing to purchase. Intending purchasers must satisfy themselves by inspection or otherwise to the correctness of the statements contained in these particulars. Knightsbridge Estate Agents & valuers (nor any person in their employment) has any authority to make any representation or warranty in relation to the property. The floor plans are not to scale, and are intended for use as a guide to the layout of the property only. They should not be used for any other purpose. Similarly, the plans are not designed to represent the actual décor found at the property in respect of flooring, wall coverings or fixtures and fittings.

Ground Floor



First Floor



You can ~~include any text here.~~ The text can be modified upon generating your brochure.



We must inform all prospective purchasers that the measurements are taken by an electronic take and are provided as a guide only and they should not be used as accurate measurements. We have not tested any mains services, gas or electric appliances, or fixtures and fittings mentioned in these details, therefore, prospective purchasers should satisfy themselves before committing to purchase. Intending purchasers must satisfy themselves by inspection or otherwise to the correctness of the statements contained in these particulars. Knightsbridge Estate Agents (nor any person in their employment) has any authority to make any representation or warranty in relation to the property. The floor plans are not to scale, and are intended for use as a guide to the layout of the property only. They should not be used for any other purpose. We are required by law to conduct anti-money laundering checks on all those selling or buying a property. Whilst we retain responsibility for ensuring checks and any ongoing monitoring are carried out correctly, the initial checks are carried out on our behalf by Lifetime Legal who will contact you once you have agreed to instruct us in your sale or had an offer accepted on a property you wish to buy. The cost of these checks is £60 (incl. VAT), which covers the cost of obtaining relevant data and any manual checks and monitoring which might be required. This fee will need to be paid by you in advance of us publishing your property (in the case of a vendor) or issuing a memorandum of sale (in the case of a buyer), directly to Lifetime Legal, and is non-refundable. We will receive some of the fee taken by Lifetime Legal to compensate for its role in the provision of these checks.