



House

FLAT 1 CARPENTERS COURT WELLING HIGH STREET,

Per Month

£2,000

FEATURES

- Three Bedroom Apartment in the Prime location of Welling High Street
- Large family bathroom and Ensuite shower room
- Open plan Kitchen and lounge with built in white goods
- Balcony
- Car parking space



3 Bedroom House located in Welling

Stunning Three Bedroom ground floor apartment in the sort for Location on Welling High Street.

Contact today to view.

Call us on

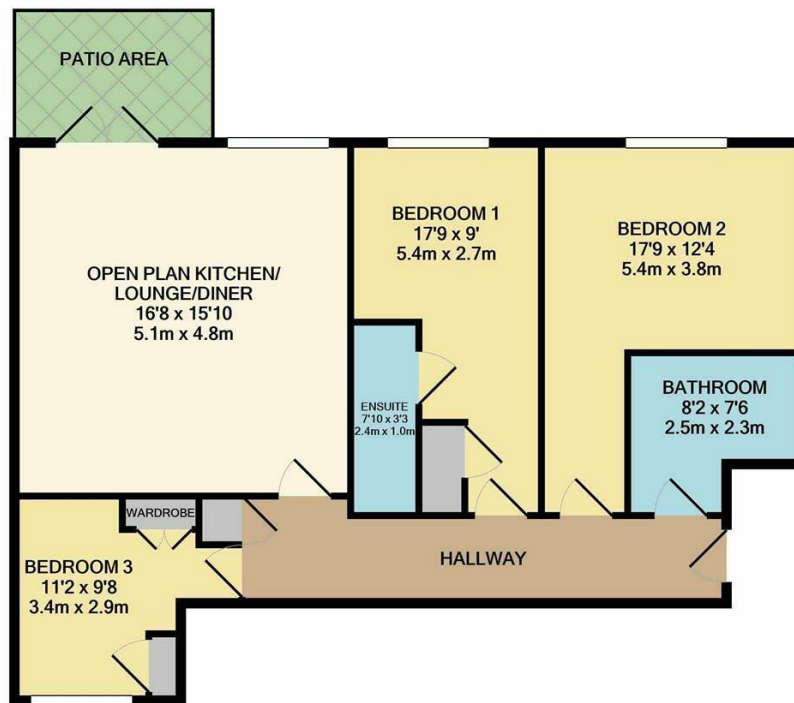
01322 948500

Belvedere@bexleyhomes.co.uk

www.bexleyhomes.co.uk

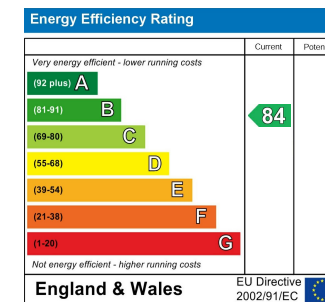
Council Tax Band

D



TOTAL APPROX. FLOOR AREA 820 SQ.FT. (76.2 SQ.M.)

Whilst every attempt has been made to ensure the accuracy of the floor plan contained here, measurements of doors, windows, rooms and any other items are approximate and no responsibility is taken for any error, omission, or mis-statement. This plan is for illustrative purposes only and should be used as such by any prospective purchaser. The services, systems and appliances shown have not been tested and no guarantee as to their operability or efficiency can be given
Made with Metropix ©2020



Agents Note: Whilst every care has been taken to prepare these particulars, they are for guidance purposes only. All measurements are approximate and are for general guidance purposes only and whilst every care has been taken to ensure their accuracy, they should not be relied upon and potential buyers are advised to recheck the measurements.

BEXLEY HOMES