



Meadowfield Place, Plympton

Guide Price £425,000

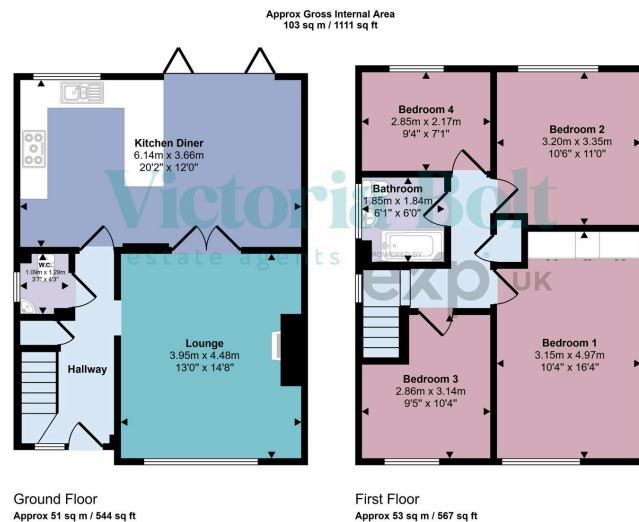
🛏 4 🚿 1 🛋 2



- Four-bedroom detached family home situated on a corner plot
- Bi-fold doors opening onto the rear garden
- Downstairs WC
- Enclosed side and rear garden with double gate access
- Well-presented throughout with contemporary finishes
- Modern open-plan kitchen/diner
- Separate cosy lounge with media wall
- Modern family bathroom
- Front lawn with potential to create additional off-street parking (subject to consents)
- Convenient location close to amenities, schools and transport links



A well-presented four-bedroom detached family home offering modern, open-plan living with a stylish kitchen/diner, a generous enclosed garden with double gate access, and excellent potential for additional off-street parking. Ideally located close to local amenities, schools and transport links.



This floorplan is only for illustrative purposes and is not to scale. Measurements of rooms, doors, windows, and any items are approximate and no responsibility is taken for any error, omission or mis-statement. Icons of items such as bathroom suites are representations only and may not look like the real items. Made with Made Snappy 360.

