



Connells

Field Close
Sandridge St. Albans

Field Close Sandridge St. Albans AL4 9NW

for sale guide price
£230,000



Property Description

This one bedroom cluster house comprises of a lounge and kitchen on the ground floor and then spiral stairs leading to the bedroom and bathroom on the first floor. Externally there is a small front garden and allocated parking. With the added benefit of there being NO ONWARD CHAIN and the white goods being included in the sale.

Field Close is situated in a quiet cul-de-sac location within the highly sought after area of Marshalswick in St Albans, renowned for its well-regarded schools. The Quadrant shopping centre in Marshalswick boasts a large selection of local shops and eateries including a Marks and Spencer food hall and then St Albans City Centre is less than two miles away and provides an excellent selection of shopping and leisure facilities along with a mainline railway station to London St Pancras.

Auctioneer's Comments

This property is offered through Modern Method of Auction. Should you view, offer or bid your data will be shared with the Auctioneer, iamsold Limited. This method requires both parties to complete the transaction within 56 days, allowing buyers to proceed with mortgage finance (subject to lending criteria, affordability and survey).

The buyer is required to sign a reservation agreement and make payment of a non-refundable Reservation Fee of 4.5% of the purchase price including VAT, subject to a minimum of £6600.00 including VAT. This fee is paid in addition to purchase price and will be considered as part of the chargeable consideration for the property in the calculation for stamp duty liability. Buyers will be required to complete an identification process with iamsold and provide proof of how the purchase would be funded.

The property has a Buyer Information Pack containing documents about the property. The documents may not tell you everything you need to know, so you must complete your own due diligence before bidding. A sample of the Reservation Agreement and terms and conditions are contained within this pack. The buyer will also make payment of no more than £349 inc. VAT towards the preparation cost of the pack. Please confirm exact costs with the auctioneer.

The estate agent and auctioneer may recommend the services of other providers to you, in which they will be paid for the referral. These services are optional, and you will be advised of any payment, in writing before any services are accepted. Listing is subject to a start price and undisclosed reserve price that can change.

Lounge

13' 8" max x 16' 5" max (4.17m max x 5.00m max)

Kitchen

6' max x 7' max (1.83m max x 2.13m max)

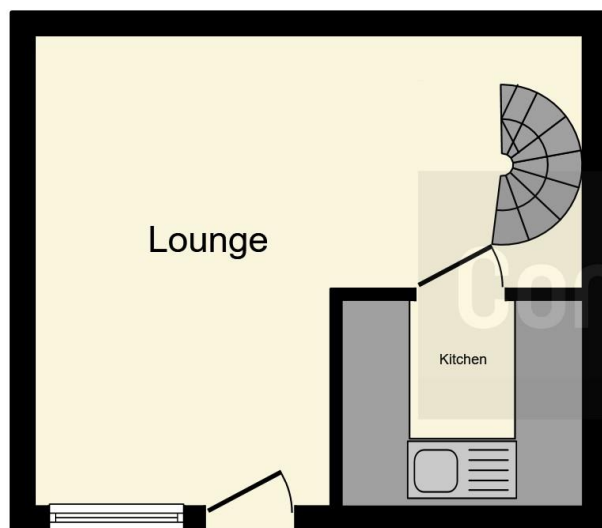
Landing

Bedroom

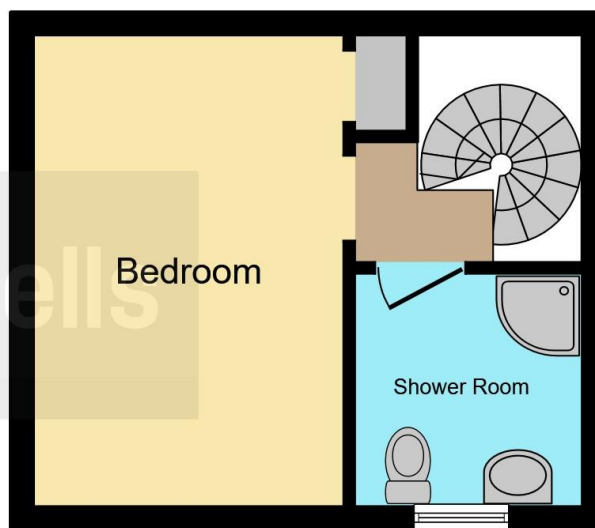
11' 2" max x 13' 7" max (3.40m max x 4.14m max)

Bathroom





Ground Floor



First Floor

This floor plan is for illustrative purposes only. It is not drawn to scale. Any measurements, floor areas (including any total floor area), openings and orientation are approximate. No details are guaranteed, they cannot be relied upon for any purpose and they do not form part of any agreement. No liability is taken for any error, omission or misstatement. A party must rely upon its own inspection(s). Powered by www.focalagent.com

To view this property please contact Connells on

T 01727 851 100
E marshalswick@connells.co.uk

5 Wycombe Place The Quadrant Marshalswick
 ST ALBANS AL4 9RH

EPC Rating: E Council Tax
 Band: C

view this property online connells.co.uk/Property/MWK306231



Tenure: Freehold



1. MONEY LAUNDERING REGULATIONS Intending purchasers will be asked to produce identification documentation at a later stage and we would ask for your co-operation in order that there will be no delay in agreeing the sale. 2. These particulars do not constitute part or all of an offer or contract. 3. The measurements indicated are supplied for guidance only and as such must be considered incorrect. Potential buyers are advised to recheck measurements before committing to any expense. 4. We have not tested any apparatus, equipment, fixtures, fittings or services and it is in the buyers interest to check the working condition of any appliances.

Connells Residential is registered in England and Wales under company number 1489613, Registered Office is Cumbria House, 16-20 Hockliffe Street, Leighton Buzzard, Bedfordshire, LU7 1GN. VAT Registration Number is 500 2481 05.

See all our properties at www.connells.co.uk | www.rightmove.co.uk | www.zoopla.co.uk

Property Ref: MWK306231 - 0003