



4 Rookwood Close, Merstham, RH1 3AY
Guide Price £285,000

Thomas & May is pleased to offer this spacious first floor maisonette ideally located for access to Merstham train station. The property comprises: entrance hall with large storage cupboard, lounge/diner with balcony overlooking the communal gardens, kitchen with appliances, two double bedrooms, bathroom, separate W/C & garage.

LEASE:

999 years from 29 Sept 1962 - 935 years remaining

SERVICE CHARGE:

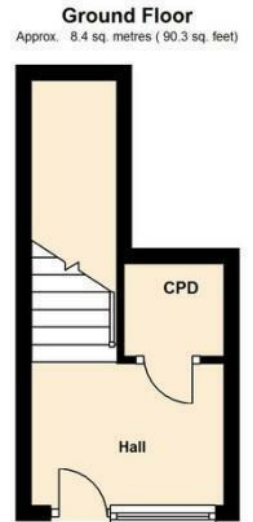
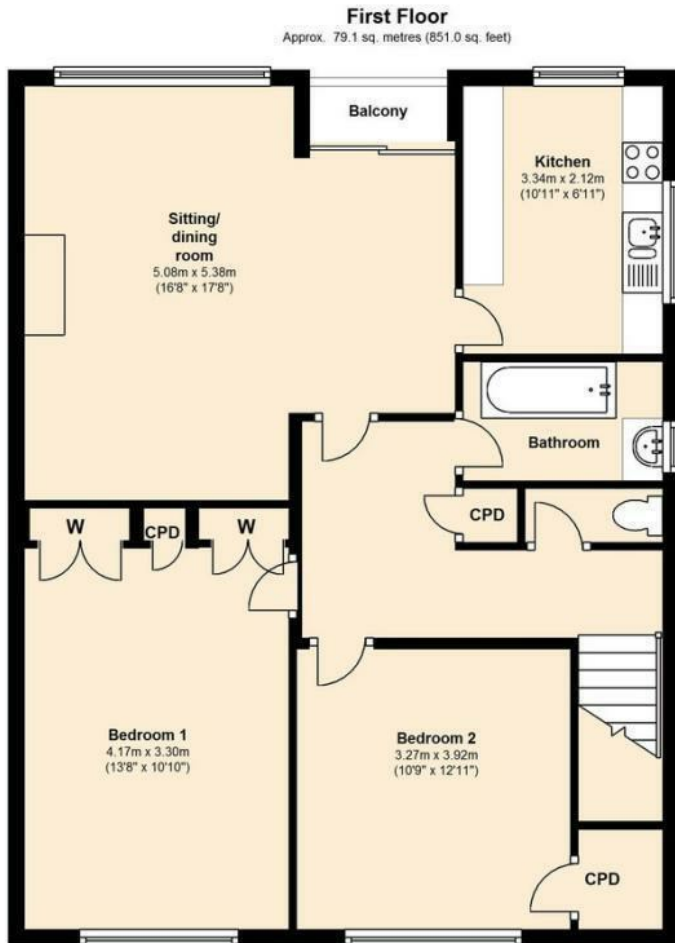
£1668 per annum

GROUND RENT

Peppercorn

COUNCIL TAX BAND C

Floor Plan



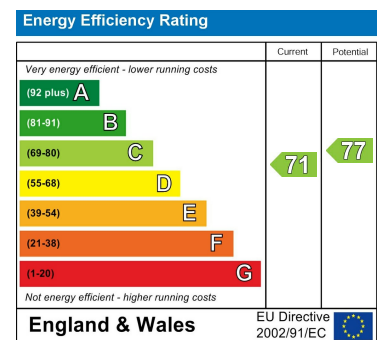
Not to scale

Total area: approx. 87.5 sq. metres (941.3 sq. feet)

Area Map



Energy Efficiency Graph



These particulars, whilst believed to be accurate are set out as a general outline only for guidance and do not constitute any part of an offer or contract. Intending purchasers should not rely on them as statements of representation of fact, but must satisfy themselves by inspection or otherwise as to their accuracy. No person in this firm's employment has the authority to make or give any representation or warranty in respect of the property.