



Southfield Road, W4 £625,000

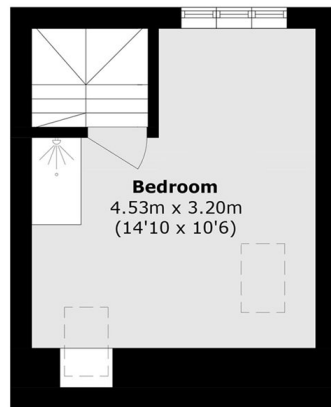
A well presented three bedroom split-level conversion apartment with a separate modern kitchen, spacious reception/diner and a family bathroom.

Southfield road is located between Chiswick and South Acton with accessibility to both South Acton and Chiswick Park Tube Stations. There are also various bus routes located within close proximity and Southfield Recreation park is moments away.

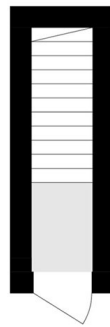
Features

- Three Bedrooms
- Two Bathrooms
- Split-Level
- Separate Kitchen
- No Onward Chain

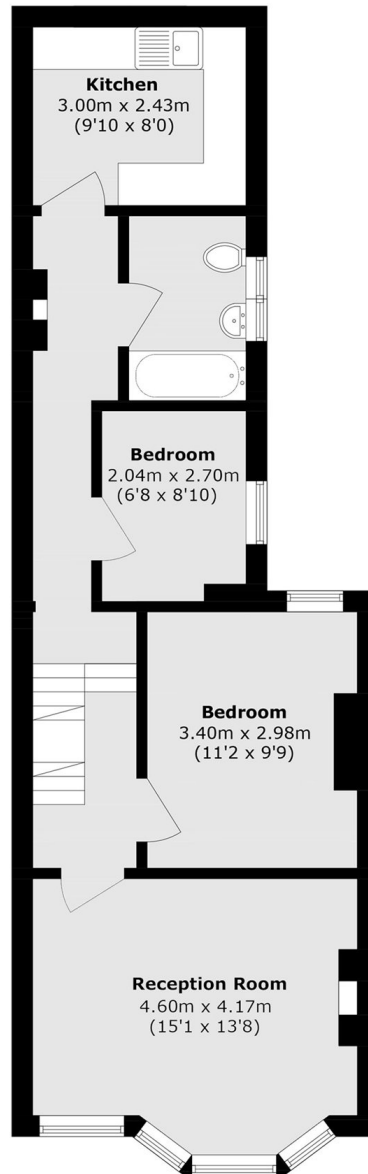
Southfield Road, London, W4



Second Floor



Ground Floor



First Floor

Total area (approx.): 80.7 sq. m (868.6 sq. ft)