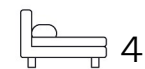




Living
made
better

Mitcham Road
East Ham, E6 3LT



Price Guide £600,000

Mitcham Road, East Ham E6 3LT

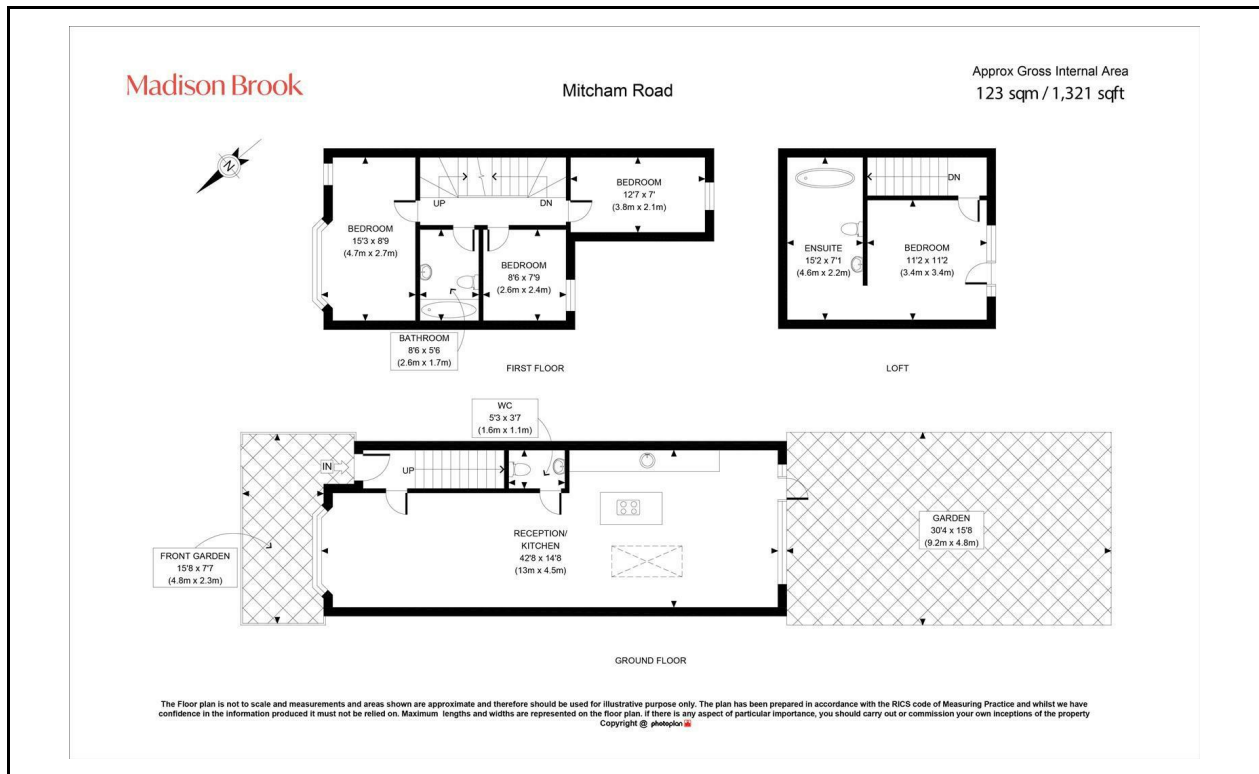
Madison Brook

Property Summary

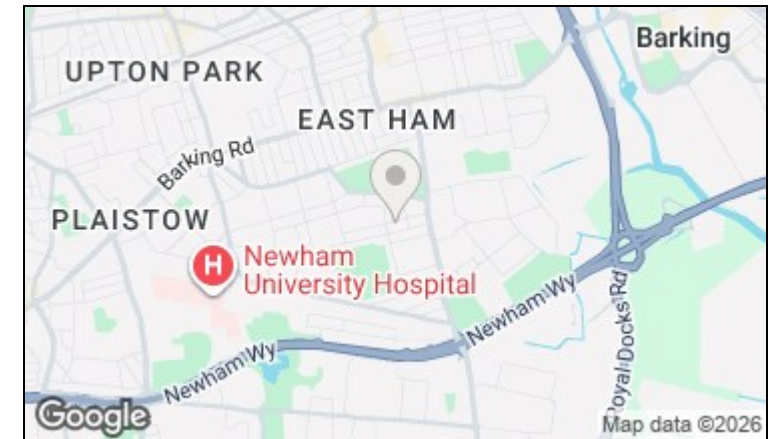
This beautifully reimagined four-bedroom home has undergone a full back-to-brick renovation, offering exceptional quality and luxurious living in the heart of East Ham. Designed with modern family life in mind, the property features a stunning open-plan kitchen/living space with sleek cabinetry, integrated appliances, skylights, and full-width bi-fold doors opening onto a landscaped rear garden. Set over three levels, the home comprises four generous bedrooms and two stylish bathrooms, including a top-floor principal suite with Juliet balcony and freestanding bath under a skylight.

Located on a peaceful residential street within easy reach of East Ham Underground Station, local schools, and High Street amenities, this is a turn-key home offering the perfect blend of luxury and location.

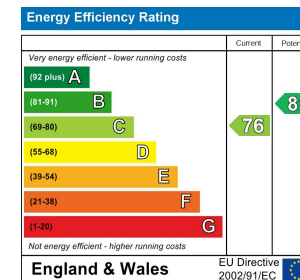
Floorplan



Area Map



Energy Efficiency Graph



These particulars, whilst believed to be accurate are set out as a general outline only for guidance and do not constitute any part of an offer or contract. Intending purchasers should not rely on them as statements of representation of fact, but must satisfy themselves by inspection or otherwise as to their accuracy. No person in this firm's employment has the authority to make or give any representation or warranty in respect of the property.

Unit B 20 Western Gateway, Royal Victoria Dock, London, E16 1BS

Tel: 020 3946 6000 Email: docklands@madisonbrook.com <https://madisonbrook.com/>