



Greville House  
Kinnerton Street, SW1X

CHESTERTONS





Perfectly located in the heart of Knightsbridge just moments from Hyde Park, this well-kept apartment is an estimated 1,165 sq. ft and located in a popular portered development with lift access.

The large reception room benefits from natural light and is easily divided into a comfortable seating area and dining/entertaining space. The rest of the accommodation is finished to a good standard and includes three double bedrooms with built-in storage and two bathrooms, one of which is en-suite.

Greville House is located in the highly sought after Knightsbridge area, just a couple of minutes' walk from Hyde Park. Also in close walking distance are both Knightsbridge and Hyde Park tube stations and the popular shopping experience offered on Brompton Road and Harrods.

- Panoramic Views
- Portered building
- 7th Floor
- Lift access
- Modern Kitchen
- Moments from Hyde Park

### £6,747 pcm

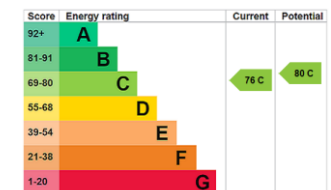
Additional tenant charges apply (fees apply to non-AST tenancies only)

Tenancy Agreement Fee: £300

References per Tenant/Guarantor: £60

Inventory check (approx. £100 – £250 inc. VAT)

[chestertons.co.uk/property-to-rent/applicable-fees](http://chestertons.co.uk/property-to-rent/applicable-fees)



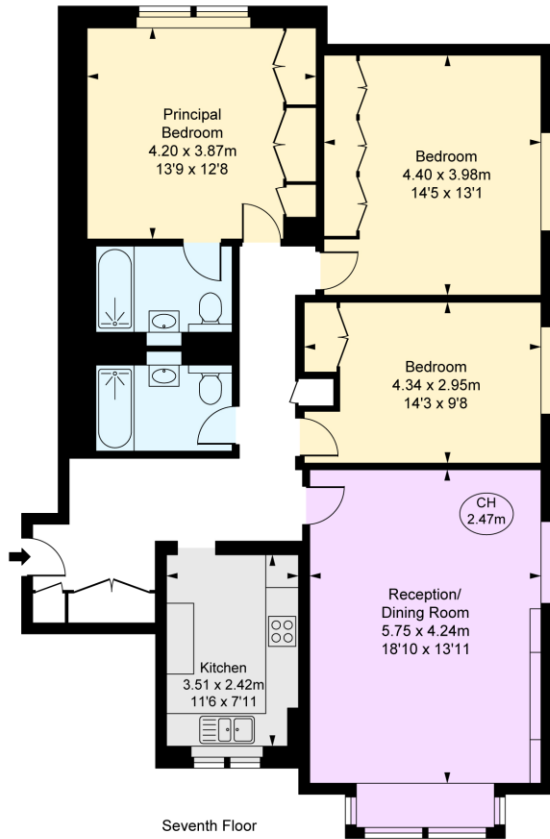
**Minimum Term:** 12 months  
**Deposit Required:** 5 weeks  
**Local Authority:** Westminster  
**Council Tax Band:** H  
**EPC Rating:** C  
**Part Furnished**

### Chestertons Knightsbridge & Belgravia Lettings

31 Lowndes Street  
 London  
 SW1X 9HX

[knightsbridgelettingsusers@chestertons.co.uk](mailto:knightsbridgelettingsusers@chestertons.co.uk)  
 02072353530  
[chestertons.co.uk](http://chestertons.co.uk)

Greville House,  
Kinnerton Street, SW1X  
Approximate Gross Internal Area  
109.32 sq m / 1,177 sq ft  
( CH = Ceiling Heights )



This plan is not to scale. It is for guidance and not for valuation purposes.  
All measurements and areas are approximate only, and have been prepared in accordance with the current edition of the RICS Code of Measuring Practice.  
© Fulham Performance

Chesterton UK Services Limited trading as Chestertons for themselves and for the vendor of this property whose agents they are, give notice that (i) these particulars do not constitute any part of an offer or contract, (ii) all statements contained within these particulars are made without responsibility on the part of Chestertons or the vendor, (iii) whilst made in good faith, none of the statements contained within these particulars are to be relied upon as a statement or representation of fact, (iv) any intending purchasers must satisfy themselves by inspection or otherwise as to the correctness of each of the statements contained within these particulars, (v) the vendor does not make or give either Chestertons or any person in their employment any authority to make or give representation or warranty whatsoever in relation to this property. Wide angle lenses may be used. ©Copyright Chestertons | Chesterton Global Ltd | Registered Office 5th Floor, The Lantern, 75 Hampstead Road, London, NW1 2PL Registered Company Number 05334580.



This paper is  
100% recyclable