



Doverfield Road, SW2

£475,000

 3  1  1  E

- Three Bedrooms
- Chain Free
- Share Of Freehold
- First Floor
- Scope To Extend SSTP
- Own Front Door



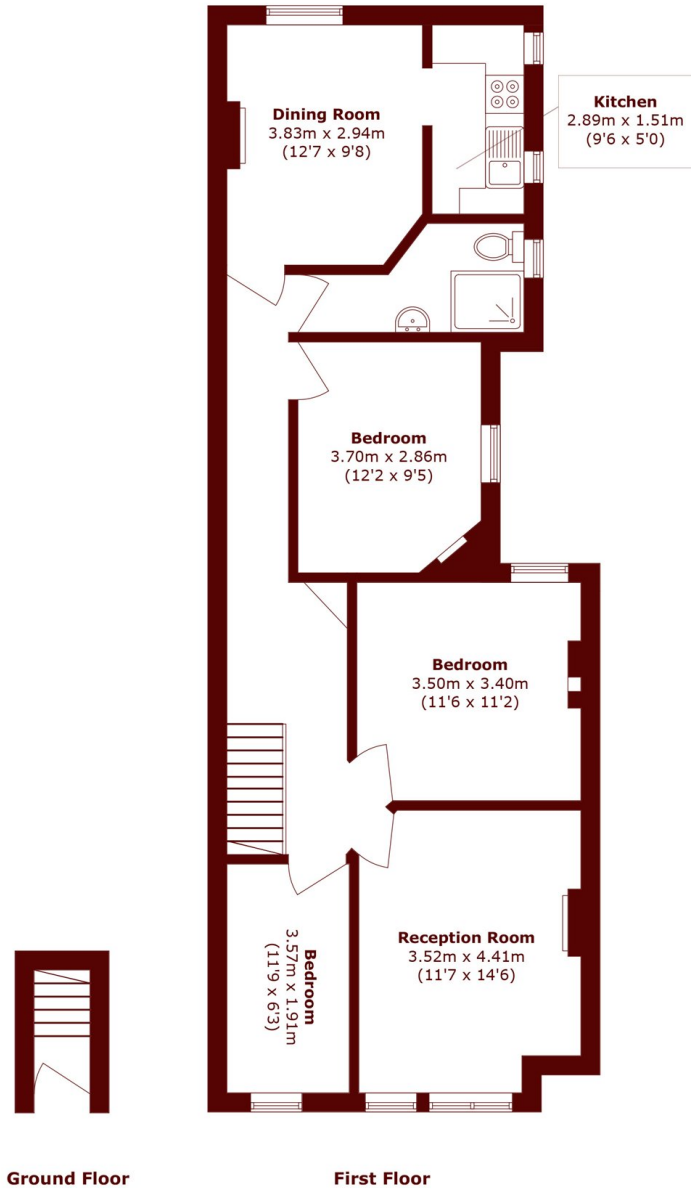


ABOUT THE PROPERTY

A generous three bedroom maisonette set over the first floor of an attractive period property spanning 874 sqft with further scope to extend into the loft SFTP. The property benefits from a share of freehold and is offered to the market chain free.

Doverfield Road is a popular residential tree lined street close to the vast array of independent shops, cafes, bars and restaurants of Brixton Hill and with the open green spaces of Brockwell Park nearby alongside the excellent transport links of Brixton Tube (Victoria Line), Brixton and Streatham Hill Overground Stations and multiple bus routes offering direct access into central London.





Total area (approx.): 81.2 sq. m (874.0 sq. ft)

Marsh & Parsons Brixton
 400-402 Coldharbour Lane,
 London, SW9 8LF
 020 7733 4595

We aim to make our particulars both accurate and reliable. However, they are not guaranteed; nor do they form part of an offer or contract. If you require clarification on any points then please contact us, especially if you're traveling some distance to view. Please note that appliances and heating systems have not been tested and therefore no warranties can be given as to their good working order.