

# SNELLERS

ESTATE AGENTS



## Langdon Park, TW11

£399,950

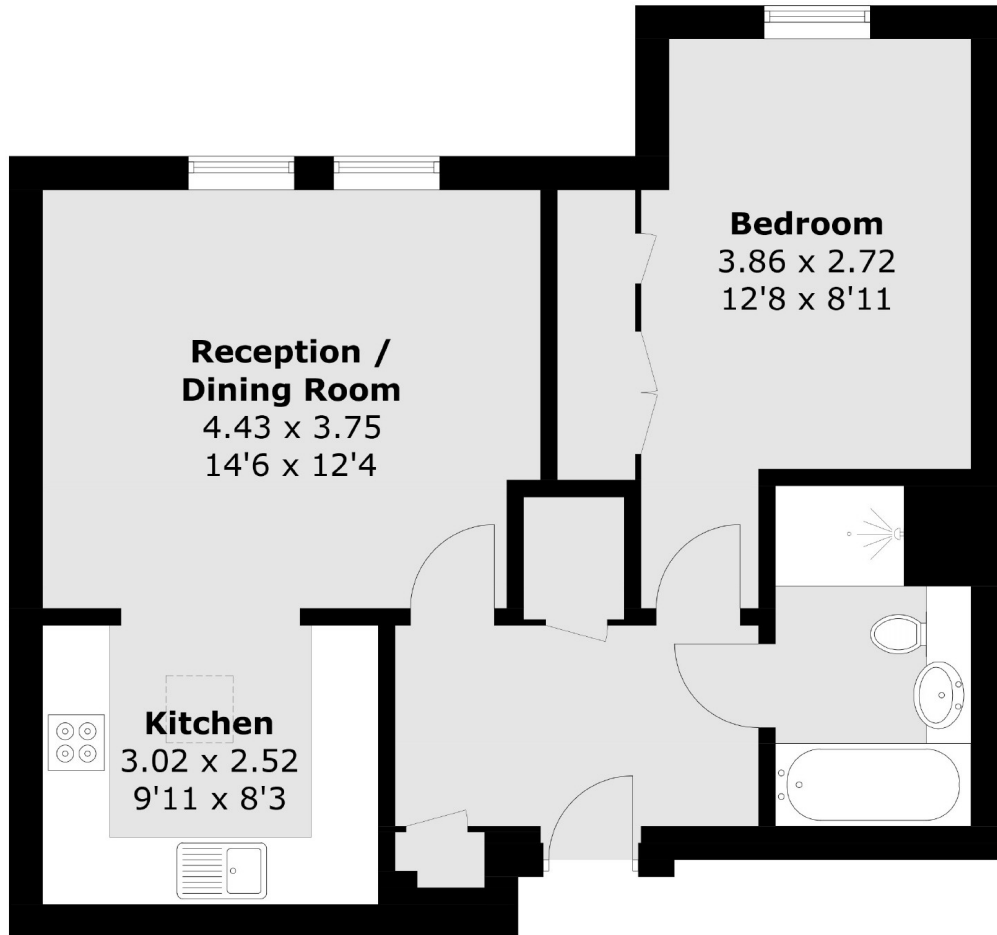
A generous one double bedroom top floor apartment set within the Langdon Park development. Offering almost 600 sq.ft of immaculately presented living space, beautifully landscaped communal gardens, allocated parking, residents gym and no onward chain.

Langdon Park is an exclusive residential development with extensive communal grounds and residents gymnasium. The Royal Bushy Park, Hampton Wick Station and Kingston Town Centre with its array of shops are all close by.

- Double Bedroom • Lift Access • Allocated Parking •
- Residents Gym • Communal Gardens • No Onward Chain •

# SNELLERS

ESTATE AGENTS



Total area (approx.): 54.0 sq. m (581.2 sq. ft)

Snellers Teddington Sales  
74 Broad Street  
Teddington  
TW11 8QX  
020 8408 8040  
teddingtonsales@snellers.co.uk

Energy Rating: D We aim to make our particulars both accurate and reliable. However they are not guaranteed; nor do they form part of an offer or contract. If you require clarification on any points then please contact us, especially if you're traveling some distance to view. Please note that appliances and heating systems have not been tested and therefore no warranties can be given as to their good working order