



Lincoln Plaza, E14

£400,000

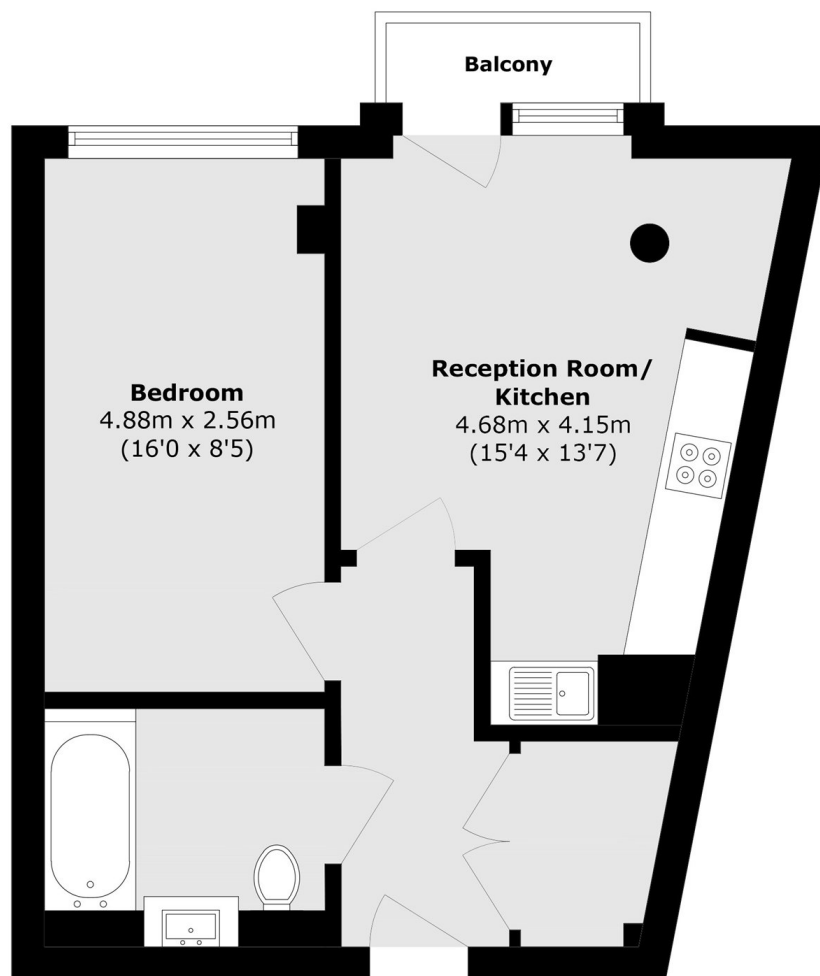
Offered to the market chain free, this well presented one bedroom apartment is situated on the twenty third floor and offers far reaching views. The property features a bright open plan reception room with a modern fitted kitchen, along with access to a communal winter garden. Residents also benefit from a 24-hour concierge service and a range of on-site facilities.

Lincoln Plaza is conveniently located close to South Quay DLR station, providing excellent connections to Canary Wharf, the City and beyond.

Features

- Chain Free
- 23rd floor
- 24 Hour Concierge
- Gym
- Swimming Pool
- Winter Garden

Lincoln Plaza, London, E14



Total area (approx.): 44.6 sq. m (480.0 sq. ft)

Balcony area (approx.): 1.6 sq. m (17.2 sq. ft)