



Haven Lane, W5

£950,000

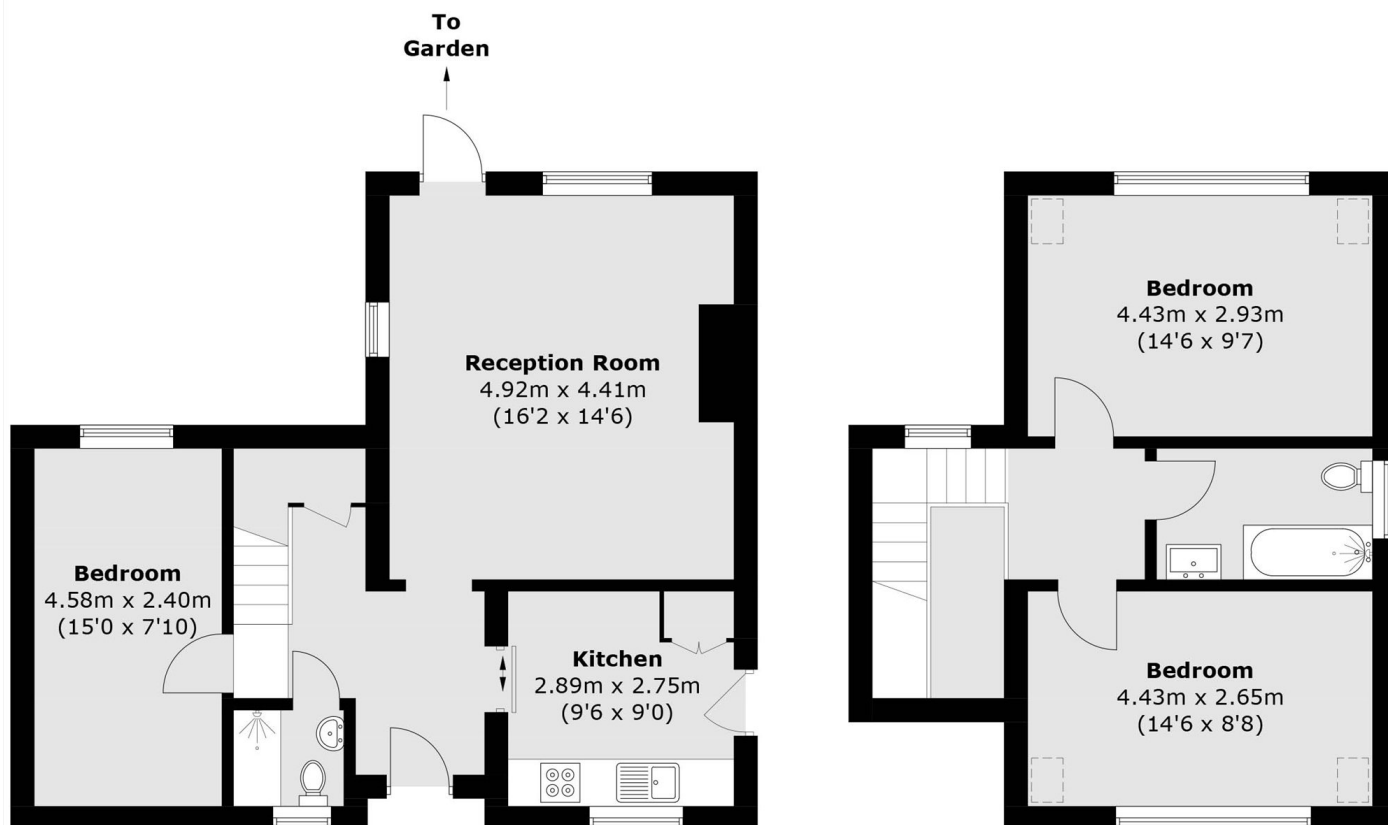
A rare opportunity to acquire this unique former coach house, thoughtfully modernised and reconfigured to create a charming three-bedroom home. The property benefits from off-street parking, a sunny rear garden, two bathrooms, a separate kitchen, and is offered to the market with no onward chain.

Ideally situated just 0.3 miles from Ealing Broadway Station, offering access to the Elizabeth, Central and District lines, as well as National Rail services. The property is also conveniently located for a range of highly regarded schools and an excellent selection of shops, restaurants and local amenities.

Features

- Three Bedrooms
- Two Bathrooms
- Former Coach House
- Recently Renovated
- Off Street Parking
- No Onward Chain

Haven Lane, London, W5



Ground Floor

First Floor

Total area (approx.): 95.6 sq. m (1,029.0 sq. ft)