


ROBERTSON PHILLIPS
Estate Agents, Valuers,
Lettings and Property Management

40 Station Road, North Harrow,
Middlesex, HA2 7SE
Tel: 0208 863 1122

Email: harrow@robertsonphillips.co.uk

Harrow Lettings: 0208 092 4045
Hatch End/Pinner Sales: 0208 428 7161


**ROBERTSON
PHILLIPS**
Est. 1991

IMPERIAL DRIVE, HARROW



Three double bedroom semi detached house

£675,000



www.robertsonphillips.co.uk



Description

This rarely available Mock Tudor THREE DOUBLE BEDROOM extended semi detached house boasts exquisite interiors, located within walking distance to both North Harrow and Rayners Lane shops, underground stations and Longfield Primary School.

ACCOMMODATION: Entrance porch, entrance hall, downstairs WC, lounge/dining room, modern kitchen (with appliances including dishwasher), large conservatory, master bedroom, bedroom two (with fitted wardrobes, large third bedroom and recently fitted bathroom suite with separate shower enclosure.

BENEFITS include; Gas/CH, D/Glazing to most windows, wood laminate flooring throughout, high ceilings, attractive front/rear gardens and off street parking for 3 cars.

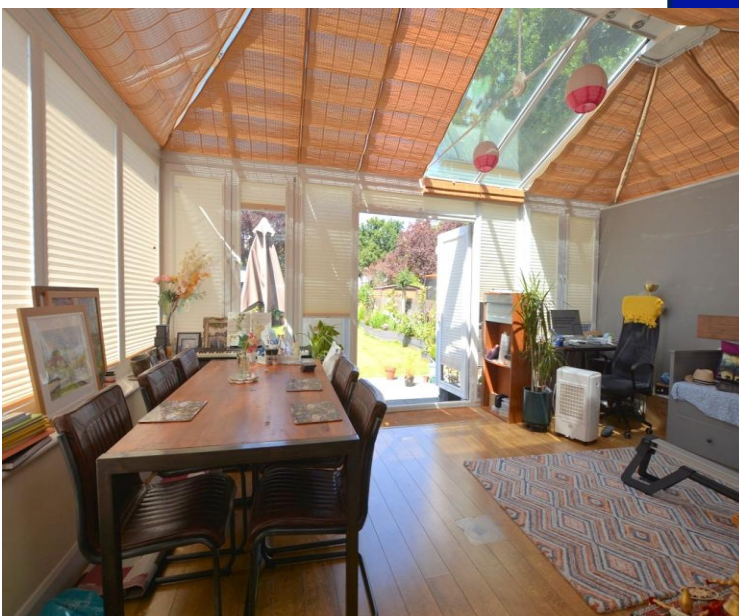


Location: Imperial Drive is a continuation from Station Road.





- *Three Double Bedrooms*
- *Gas Central Heating*
- *Two Large Receptions*
- *Off Street Parking*
- *Semi Detached*
- *Double Glazing*
- *Attractive Gardens*
- *No Upper Chain*

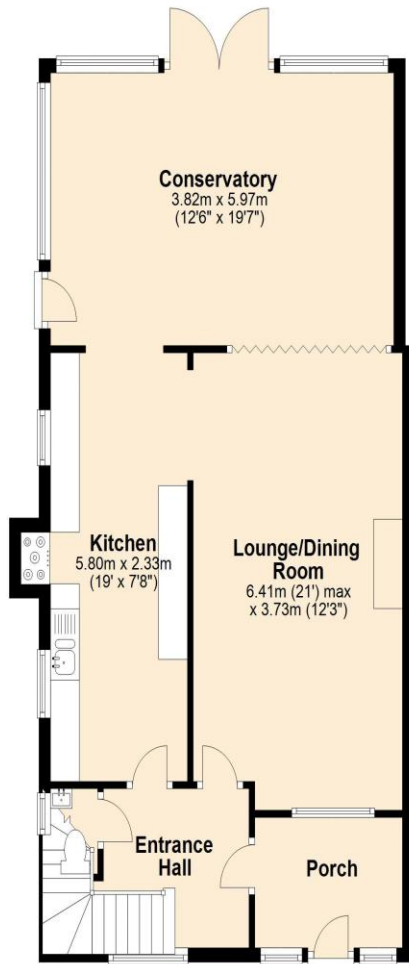


Additional Information

TENURE. FREEHOLD
LOCAL AUTHORITY. LONDON BOROUGH OF HARROW
ENERGY EFFICIENCY RATING. C

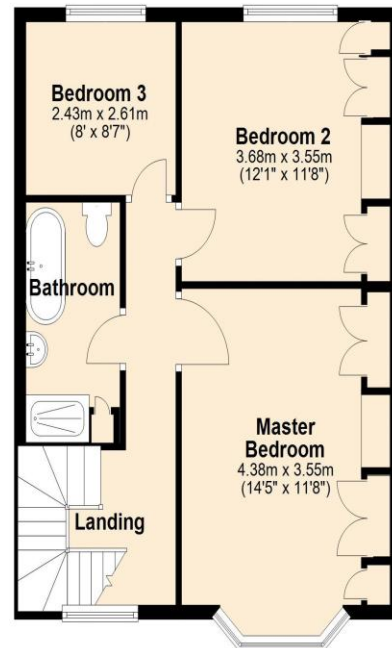
Ground Floor

Approx. 74.8 sq. metres (804.7 sq. feet)

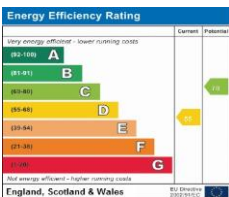


First Floor

Approx. 52.0 sq. metres (559.8 sq. feet)



Total area: approx. 126.8 sq. metres (1364.6 sq. feet)



We have not sought to verify the legal title of the property, the existence of planning permissions and/or building regulation approvals and have been unable to check the working condition of any services or appliances.

Property layouts are for general guidance and are not drawn exactly to scale. Measurements are taken at the widest points and bays, alcoves, wardrobes etc. may not be shown.