



Windermere Road, Noctorum, Prenton, CH43 9RE

welcome to

Windermere Road, Noctorum Prenton

Looking for a home you can truly make your own? This three-bedroom semi-detached property offers fantastic potential, a garage, off-road parking, spacious living accommodation and a stunning rear garden that has been lovingly maintained.

Best of all, it's offered with NO CHAIN!



Property Description

A GARDEN TO FALL IN LOVE WITH... AND A HOME BURSTING WITH POTENTIAL!

If you've been searching for a property with a beautiful garden, generous room sizes and the chance to add your own style and value, then look no further!

Offered to the market with the huge advantage of NO ONWARD CHAIN, this three-bedroom semi-detached home presents an exciting opportunity for buyers looking to create their perfect family home.

Step through the front door into a welcoming hallway leading to a spacious lounge and separate dining room, providing plenty of room for both everyday family life and entertaining guests. The property also benefits from a good-sized kitchen and the convenience of a downstairs W.C.

Upstairs, you'll find three well-proportioned bedrooms, a shower room and a separate W.C., making the layout practical for busy households.

While the property would benefit from a programme of modernisation, it offers fantastic foundations, generous accommodation and endless potential for the next owner to put their own stamp on it.

Outside is where this home truly shines. The beautiful rear garden is a real standout feature, offering a wonderful space to relax, entertain, garden or simply enjoy the outdoors. Combined with the attractive front garden, garage and off-street parking, this property delivers everything a growing family could need.

Homes with gardens like this rarely come to market. Bring your vision, unlock the potential and create something truly special. View today!!

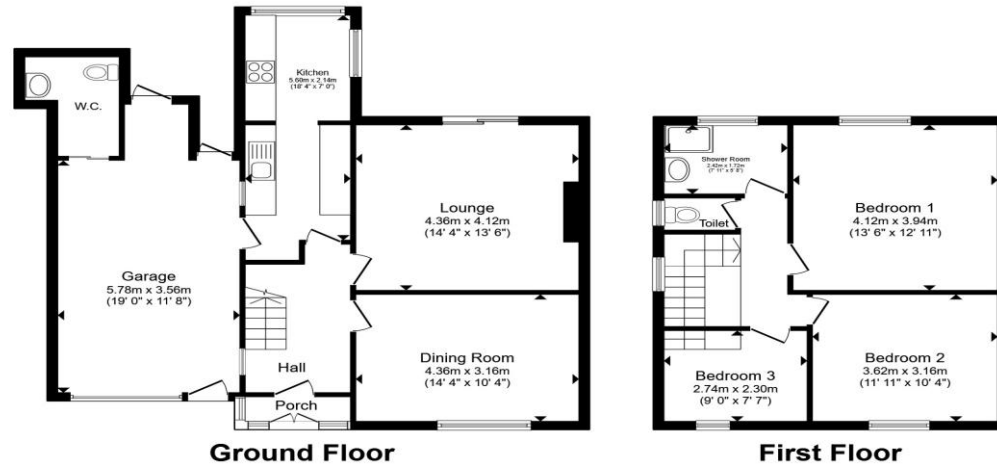
Entrance Hall

Double-glazed door to the front with single-glazed window to the side. Radiator and cupboard.

Dining Room

14' 4" x 10' 4" (4.37m x 3.15m)

Double-glazed window to the front and radiator.



Total floor area 127.2 m² (1,369 sq.ft.) approx

This floor plan is for illustrative purposes only. It is not drawn to scale. Any measurements, floor areas (including any total floor area), openings and orientation are approximate. No details are guaranteed, they cannot be relied upon for any purpose and they do not form part of any agreement. No liability is taken for any error, omission or misstatement. A party must rely upon its own inspection(s). Powered by www.propertybox.io



Lounge

14' 4" x 13' 6" (4.37m x 4.11m)

Double-glazed sliding French doors to the rear, radiator and gas fire.

Kitchen

18' 4" x 7' (5.59m x 2.13m)

Fitted kitchen comprising wall and base cupboards, sink and drainer unit and work surfaces. Electric oven and electric hob with solid hot plates. Dish washer and central heating boiler. Space and plumbing for a washing machine. Double-glazed windows to the side and rear.

First Floor Landing

Double-glazed window to the side.

Bedroom One

13' 6" x 12' 11" (4.11m x 3.94m)

Double-glazed window to the rear, radiator and built-in storage.

Bedroom Two

11' 11" x 10' 4" (3.63m x 3.15m)

Double-glazed window to the front and radiator.

Bedroom Three

9' x 7' 7" (2.74m x 2.31m)

Double-glazed window to the front and radiator.

Shower Room

Comprising walk-in shower and wash hand basin. Airing cupboard with water tank.

Separate W.C.

Comprising WC and double-glazed window to the side.

Outside

With rear garden and outbuilding.

Rear Garden

Rear garden with lawn, flagstones. Trees, plants, shrubs and foliage to garden beds. Garden shed.

Garage

19' x 11' 8" (5.79m x 3.56m)

With up and over doors and further solid door to the front.

Downstairs W.C.

Comprising W.C. and wash hand basin.



view this property online jonesandchapman.co.uk/Property/PTN116647



welcome to

Windermere Road, Noctorum Prenton

- Three Bedroom Semi Detached House
- Lounge & Dining Room
- Kitchen
- Downstairs W.C
- Shower Room & Separate W.C

Tenure: Freehold EPC Rating: E

Council Tax Band: B

£225,000



Please note the marker reflects the postcode not the actual property

view this property online jonesandchapman.co.uk/Property/PTN116647



Property Ref:
PTN116647 - 0003

1. MONEY LAUNDERING REGULATIONS Intending purchasers will be asked to produce identification documentation at a later stage and we would ask for your co-operation in order that there is no delay in agreeing the sale. 2. These particulars do not constitute part or all of an offer or contract. 3. The measurements indicated are supplied for guidance only and as such must be considered incorrect. Potential buyers are advised to recheck measurements before committing to any expense. 4. We have not tested any apparatus, equipment, fixtures or services and it is in the buyers interest to check the working condition of any appliances. 5. Where an EPC, or a Home Report (Scotland only) is held for this property, it is available for inspection at the branch by appointment. If you require a printed version of a Home Report, you will need to pay a reasonable production charge reflecting printing and other costs. 6. We are not able to offer an opinion either written or verbal on the content of these reports and this must be obtained from your legal representative. 7. Whilst we take care in preparing these reports, a buyer should ensure that his/her legal representative confirms as soon as possible all matters relating to title including the extent and boundaries of the property and other important matters before exchange of contracts.

 jones & chapman



0151 608 2287



Prenton@jonesandchapman.co.uk



349 Woodchurch Road, Prenton, PRENTON,
Merseyside, CH42 8PE



jonesandchapman.co.uk