



12 Dolphin Yard, Maidenhead Street, Hertford

SG14 1DR

Offers In Excess Of £500,000



stevenoates.com



12 Dolphin Yard Maidenhead Street, Hertford, SG14 1DR

Nestled in the Centre of Hertford, Dolphin Yard presents an impressive and rarely available duplex apartment that epitomises modern living. This luxurious residence boasts two/three well-proportioned bedrooms and two stylish bathrooms, making it an ideal choice for families or professionals seeking comfort and convenience. As you enter this beautifully appointed home, you are greeted by a spacious entrance hallway with access into two bedrooms, there are also two bathrooms. As you move upstairs, you will find the stunning open-plan kitchen/living room that offers stunning views over the River Lea. Also on this floor is the third bedroom/home office perfect as a spare bedroom or work from home space. The high-spec finishes throughout the property create an elegant atmosphere, ensuring that every corner of this home exudes sophistication. The accommodation is thoughtfully spread over two floors, providing both space and privacy. In addition to its aesthetic appeal, this apartment also features secure allocated parking for one vehicle, a valuable asset in a central location. Whether you are looking to enjoy the vibrant town centre or relax in the comfort of your own home, this property offers the perfect balance. Do not miss the opportunity to make this exquisite apartment your new home.

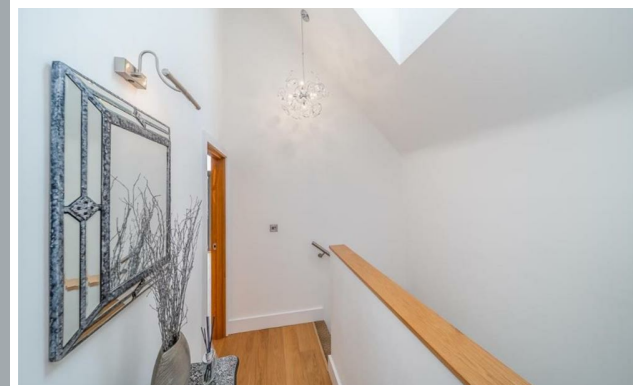
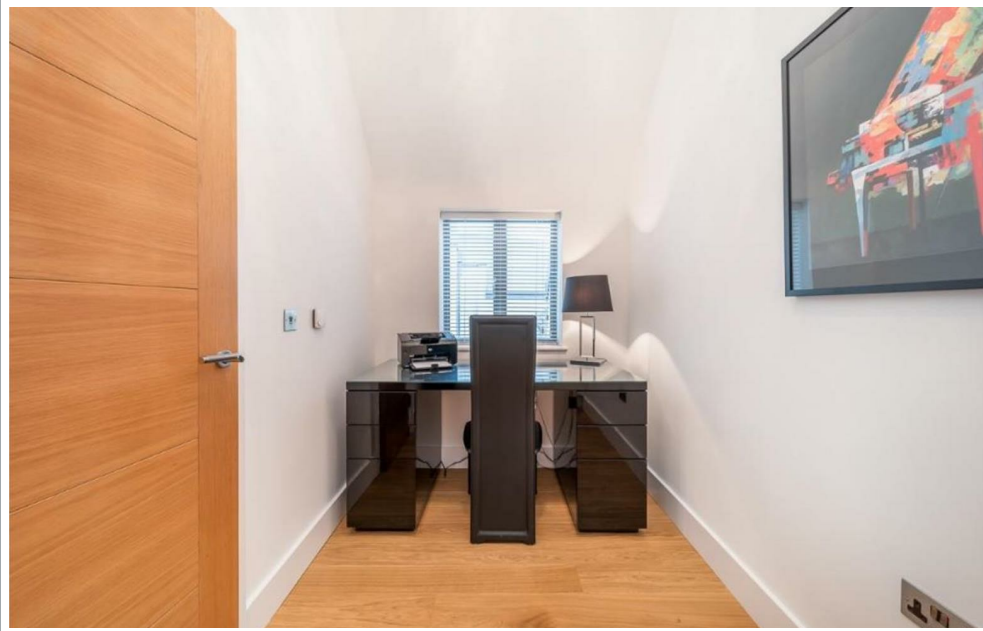
Located in this extremely sought after development in the centre of Hertford, this property benefits from easy access to both Hertford East & Hertford North railway stations which both offer fast and regular trains to London's Liverpool Street & Moorgate. Hertford town centre is only a distance away and provides a wide choice of local shops, bars and restaurants.



70 Fore Street, Hertford, Hertfordshire, SG14 1BY



70 Fore Street, Hertford, Hertfordshire, SG14 1BY

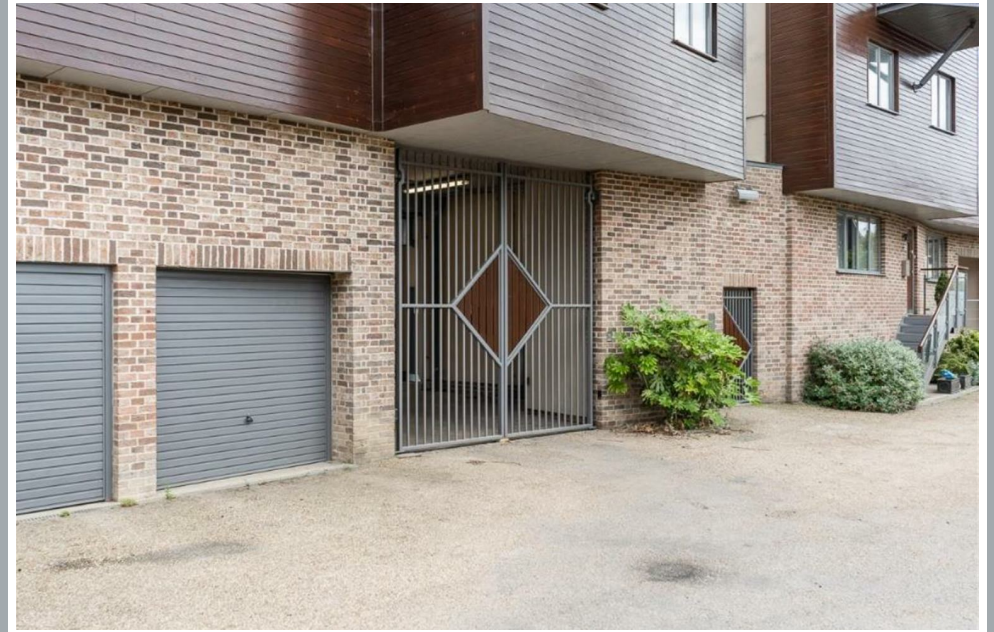


70 Fore Street, Hertford, Hertfordshire, SG14 1BY





70 Fore Street, Hertford, Hertfordshire, SG14 1BY



70 Fore Street, Hertford, Hertfordshire, SG14 1BY



Total area: approx. 98.3 sq. metres (1057.7 sq. feet)

FOR ILLUSTRATIVE PURPOSES ONLY. NOT TO SCALE.
 Whilst every attempt has been made to ensure the accuracy of the floor plan shown, all measurements, positioning, fixtures, features, fittings and any other data shown are an approximate interpretation for illustrative purposes only and are not to scale. No responsibility is taken for any error, omission, mis-statement or use of data shown.

These particulars, whilst believed to be accurate are set out as a general outline only for guidance and do not constitute any part of an offer or contract. Intending purchasers should not rely on them as statements of representation of fact, but must satisfy themselves by inspection or otherwise as to their accuracy. No person in this firm's employment has the authority to make or give any representation or warranty in respect of the property.



stevenoates.com