



Elm Lodge, Nether Street, N3
London

£950,000

This charming two-bedroom, two-bathroom Grade II listed detached cottage is believed to date from between 1790 and 1800, was originally built as the lodge to Elm Grange. Full of character and historic detail, the property features three distinctive gables with ornate carved barge boards and shaped slates – classic early 19th-century lodge architecture that gives it a picturesque, quintessential cottage appearance. Situated on the highly desirable Nether Street, the cottage benefits from a self-contained studio to the rear, double garages with planning permission (Ref. No: 24/0144/HSE) for conversion, mature gardens, and off-street parking to both the front and rear.

The house itself offers a charming front reception room and a rear dining room that opens seamlessly into a modern extended kitchen. The kitchen is flooded with natural light thanks to overhead glazed panels and enjoys lovely views over the garden. A useful downstairs shower room completes the ground floor. Upstairs are two double bedrooms and bathroom. All rooms are filled with natural light and retain beautiful period features, offering an abundance of charm and character rarely found today.





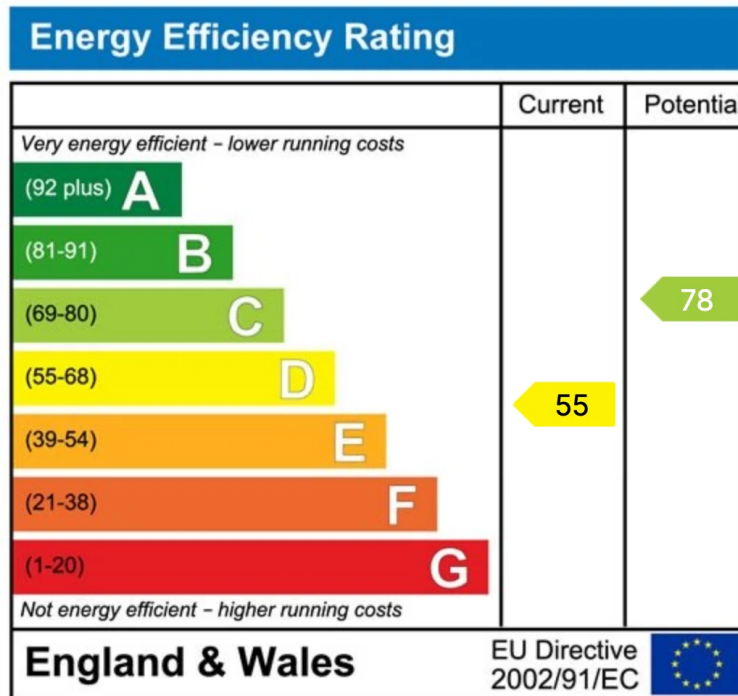
To the rear of the garden is a separate self-contained studio comprising two large rooms, a modern kitchen, dining area, and shower room. This versatile space would work perfectly as a granny annex, home office, guest suite, or generating rental income.

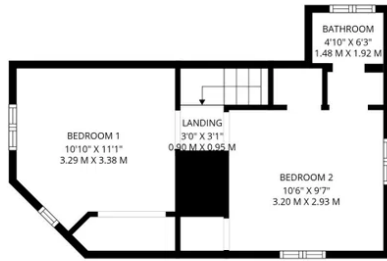
The mature rear garden provides a private oasis, accessed via the kitchen and independent side entrance. It is mainly paved with well-established shrubs, an apple tree, and a glorious wisteria. The front garden is equally charming with mature shrubs and offers off-street parking. In addition, there are double garages with planning permission to convert into further accommodation – ideal for a home office or additional studio.

The property is located on Nether Street, within easy reach of Finchley Central Underground Station (Northern Line). Excellent bus routes, local shops, cafés, and highly regarded schools are all nearby, while the open spaces of Victoria Park and the Dollis Valley Greenwalk are easily accessible.

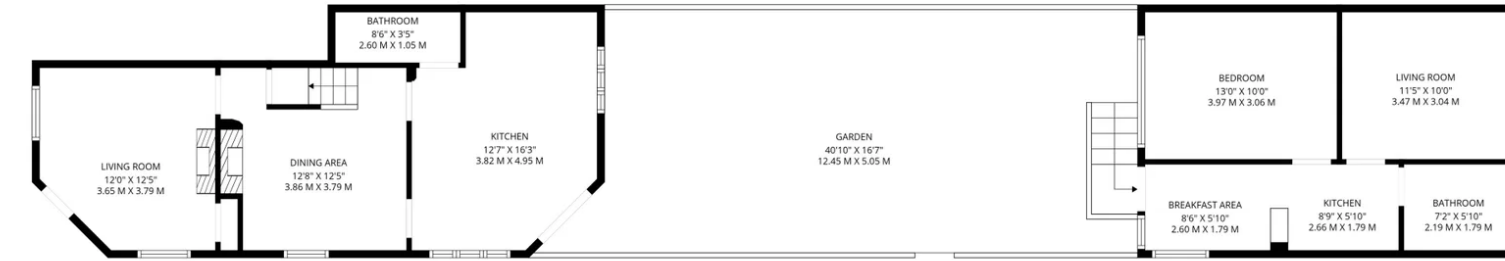
A rare opportunity to purchase a characterful detached Grade II listed cottage with a separate studio, off-street parking, and garages with conversion potential in a convenient N3 location. Early viewing is highly recommended.

Please Quote Ref: AW1324





1ST FLOOR



GROUND FLOOR

Total: 1223 sq. Ft, 113 m2
 Ground Floor: 917 sq. Ft, 85 M2, 1st Floor: 306 sq. Ft, 28 m2
 Excluded Areas: Bedroom 1: 4 sq. Ft, 0 M2, Low Ceiling: 7 sq. Ft, 0 M2, Walls: 135 sq. Ft, 13 m2

FLOOR PLAN CREATED BY CUBICASA APP. MEASUREMENTS DEEMED HIGHLY RELIABLE BUT NOT GUARANTEED.



Amanda Walker

07817 598 309

amanda.walker@expuk.com

https://amandawalker.exp.uk.com