



Plain Road, Folkestone, Kent  
Folkestone

MATCH  
ESTATES  
Guide Price  
**£585,000**



**Bedrooms: 5 | Bathrooms: 4 | Receptions: 2**

Situated on the ever-popular Plain Road in Folkestone, this beautifully refurbished four/five bedroom home offers an exceptional blend of contemporary style and versatile living. Thoughtfully extended by the current owners, the property now boasts additional upstairs accommodation, creating flexible space ideal for growing families, guests, or those working from home.

At the heart of the home is a stunning open plan kitchen, dining and living area, designed with modern lifestyles in mind. This expansive space is perfect for both everyday living and entertaining, offering a seamless flow filled with natural light and a welcoming atmosphere. The adjoining lounge provides a more intimate setting to relax and unwind, ensuring the home caters to every occasion.

Upstairs, the clever extension has introduced further bedrooms, allowing the property to function as either a four or five bedroom home depending on your needs. Each room has been finished to a high standard, continuing the sense of quality and care evident throughout the property.

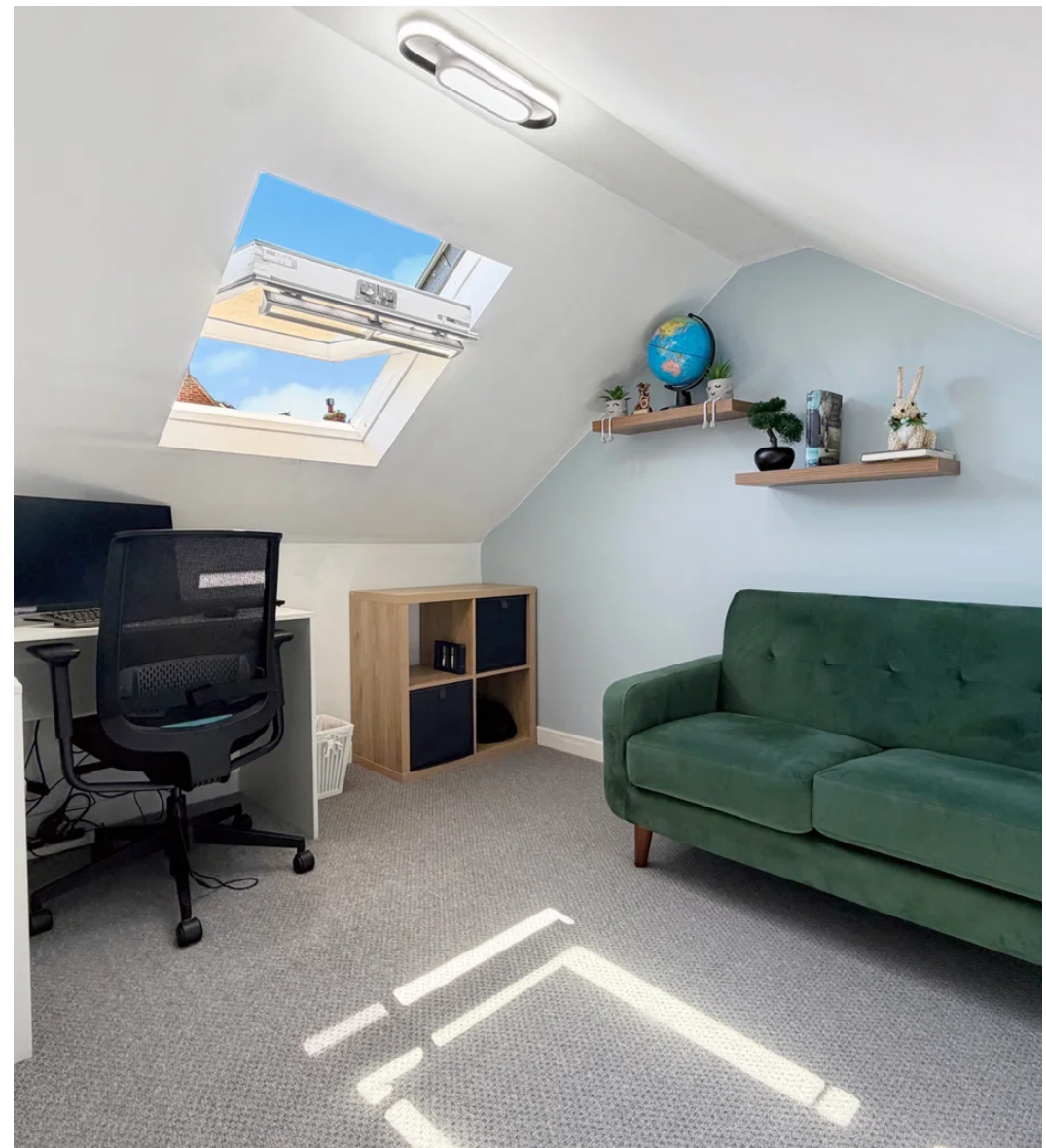
Externally, the home continues to impress. To the front, a private, fenced garden laid to lawn offers a pleasant green outlook, alongside the convenience of off-road parking. To the rear, a beautifully positioned south-facing patio provides a sun-drenched retreat—perfect for outdoor dining, entertaining, or simply enjoying quiet moments in the sunshine.

The location is equally appealing, with excellent access to Folkestone West Station, making it ideal for commuters. Families will appreciate the proximity to Folkestone School for Girls, while the vibrant amenities, eateries and coastal charm of Folkestone Town Centre are just a short distance away.

Further benefits include solar panels to the roof, enhancing the home's energy efficiency and long-term sustainability. Altogether, this is a superb opportunity to acquire a stylish, spacious and well-located home designed perfectly for modern living.







## Match Estates

B3 Bouverie House 16 Bouverie Place Folkestone CT20 1AE

01303 475 085

folkestone@match-estates.co.uk

<https://www.match-estates.co.uk/>